

Table 4: Summary for IGH primer mix

Reagent Source	Mix	L/L1		L/L2		L/L3	
		R	G	R	G	R	G
BIOMED-2	A	5			5	1	4
	B	3	3		6	1	5
	C	2	4		6	1	5
	D	2			2		2
	E		2		2		2
IVS	FR 1	7			6		6
	FR 2	3	5		7		7
	FR 3	7			6		6
HOMEBREW	FR 1	1	1		2		2
	FR 2		7		7		7
	FR 3	10	1		11		11

Table 5: Summary for IGK primer mix

Reagent Source	Mix	L/L1		L/L2		L/L3	
		R	G	R	G	R	G
BIOMED-2	A	3			3		3
	B		3		3		3
IVS	A	2			2		2
	B		2		2		2
HOMEBREW	A	1			1		1
	B		1		1		1

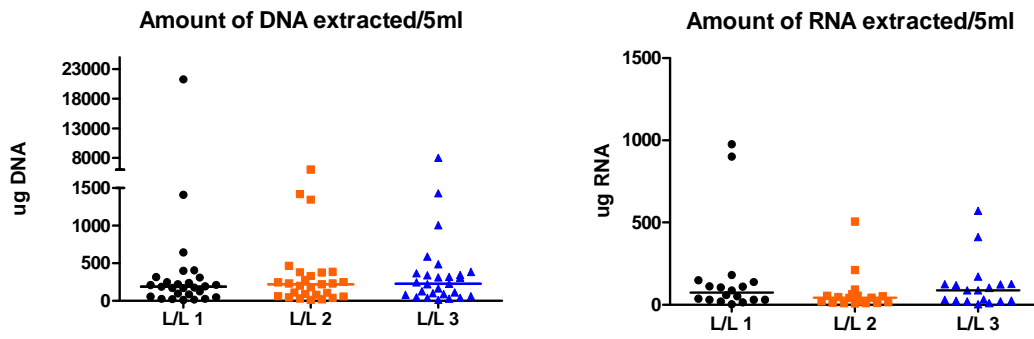
Table 6: Summary for TRG primer mix

Reagent Source	Mix	L/L1		L/L2		L/L3	
		R	G	R	G	R	G
BIOMED-2	A		4	4		4	
	B		4		4		4
IVS	Mix 1		4	4		4	
	Mix 2		3	3		3	
HOMEBREW	V1-4		1	1		1	
	V1-8		7	6		6	
	V9		7		6		6
	V10		3	2			2
	V11		5	1	3		4
	V10,11		1	1			1
	Mix 1		4	4		4	
	Mix 2		4	3	1	3	1

Table 7: Summary for TRB primer mix

Reagent Source	Mix	L/L1		L/L2		L/L3	
		R	G	R	G	R	G
BIOMED-2	A		5	5		4	1*
	B		5		5	4	1*
	C	5			5	4	1*

* different labs



	LL1	LL2	LL3		LL1	LL2	LL3
Yield (ug)	DNA	DNA	DNA		RNA	RNA	RNA
Median	190.85	225.0	237.3		72.7	42.5	88
Max	21250	6050	8050		975	505	571
Min	10.0	12.0	12.0		3	6.3	2.5

Figure 1. PT MCTM 2-08 sample DNA and RNA yields