

Figure 1

CA125 PT 5/09 Method Comparison

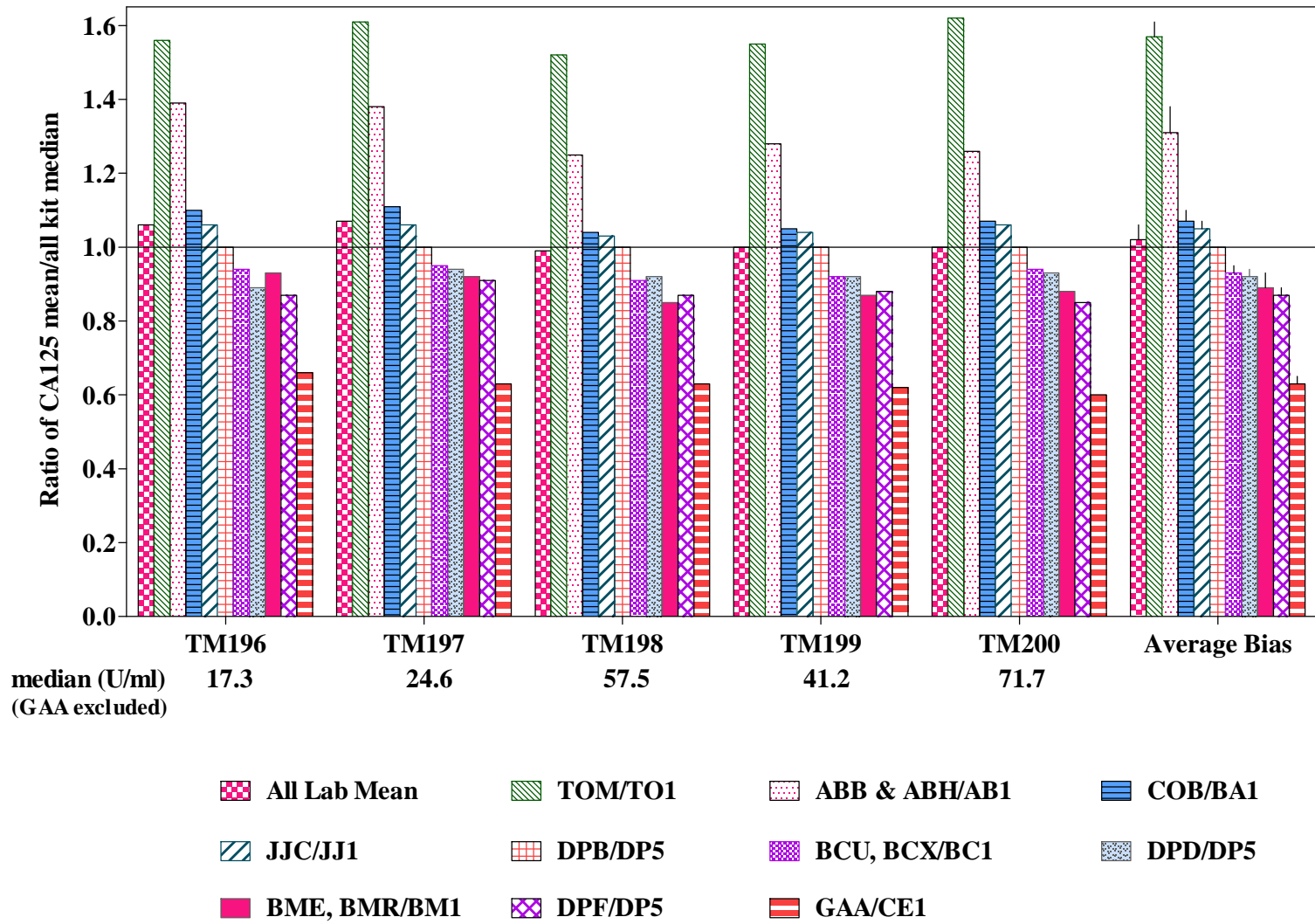


Figure 2

CA15-3 PT 5/09 Method Comparison

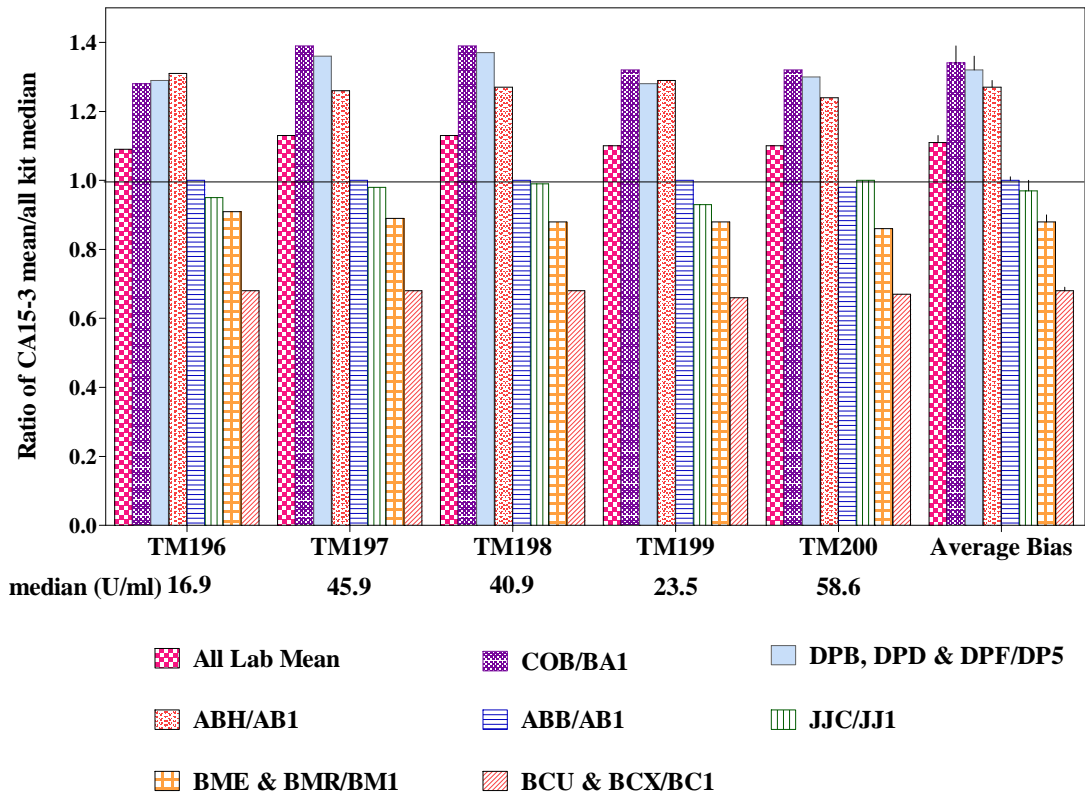


Figure 3

CA27.29 PT 5/09 Method Comparison

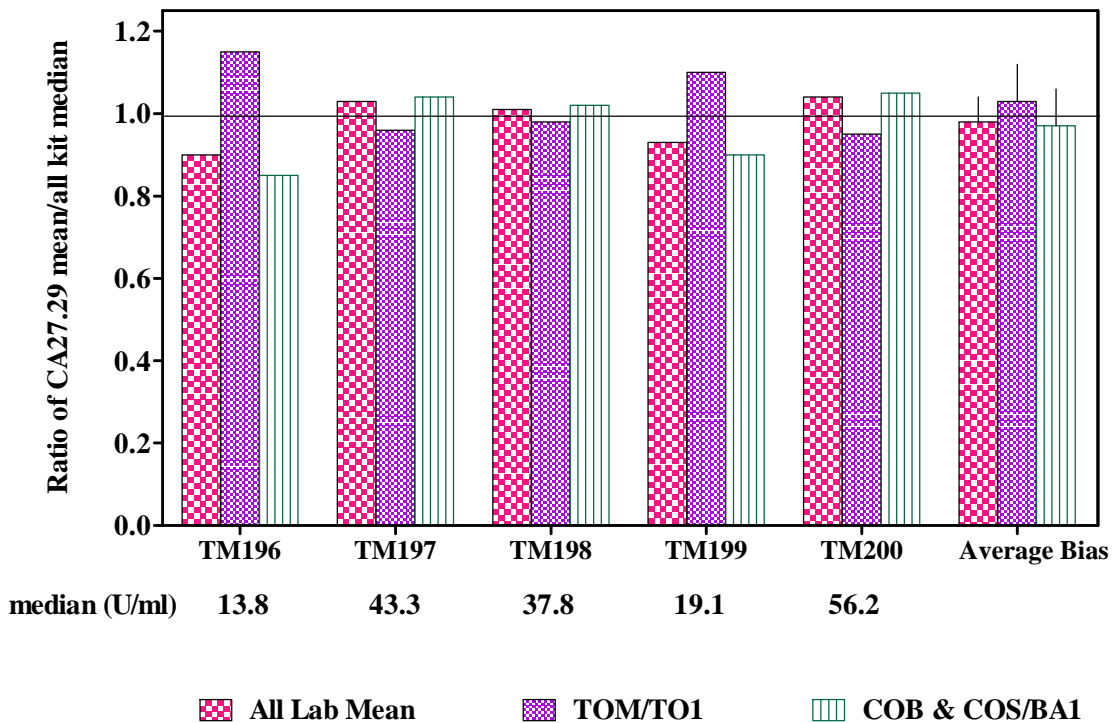


Figure 4

CA19-9 PT 5/09 Method Comparison

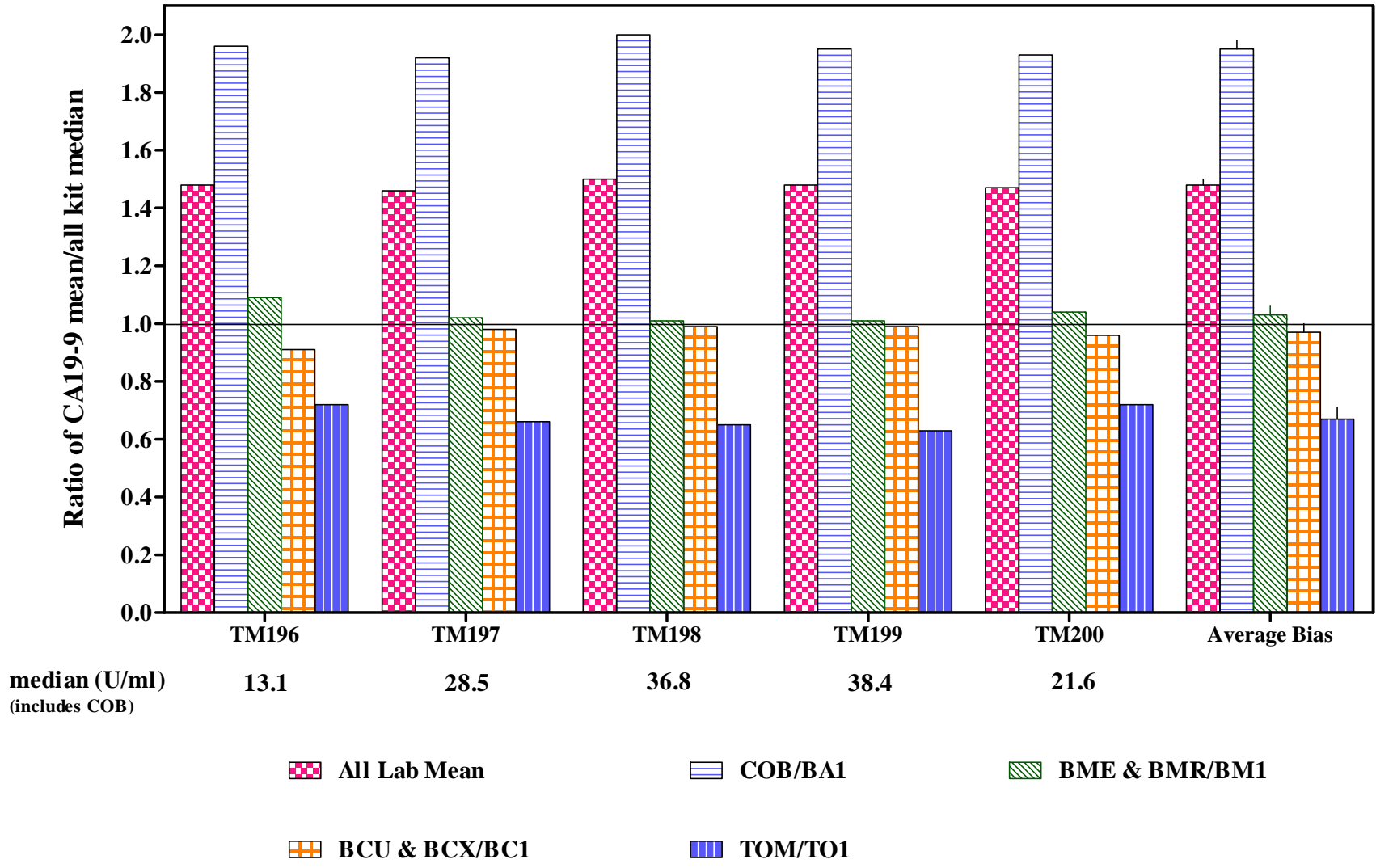


Figure 5

CEA PT 5/09 Method Comparison

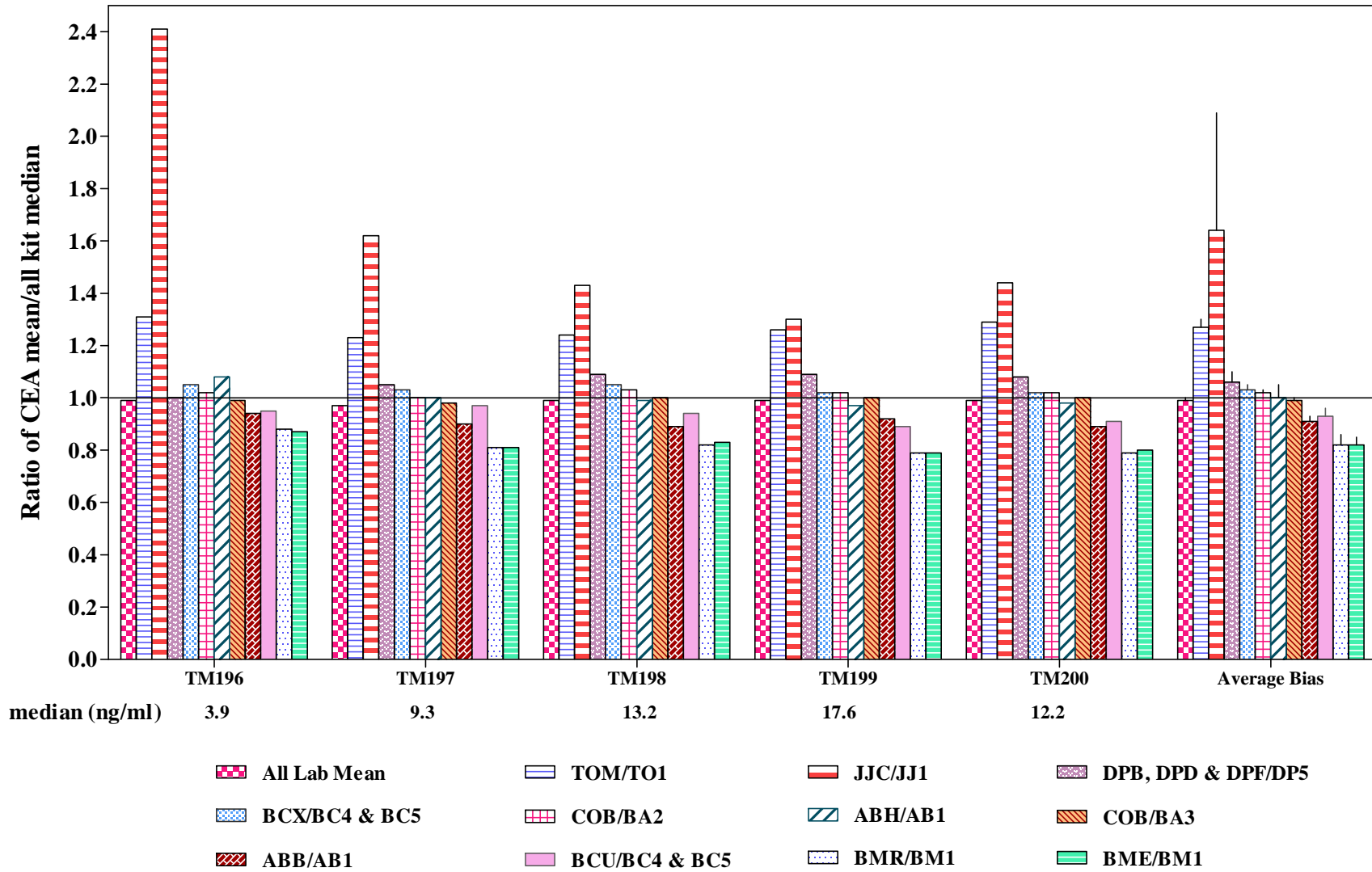


Figure 6

AFP PT 5/09 Method Comparison

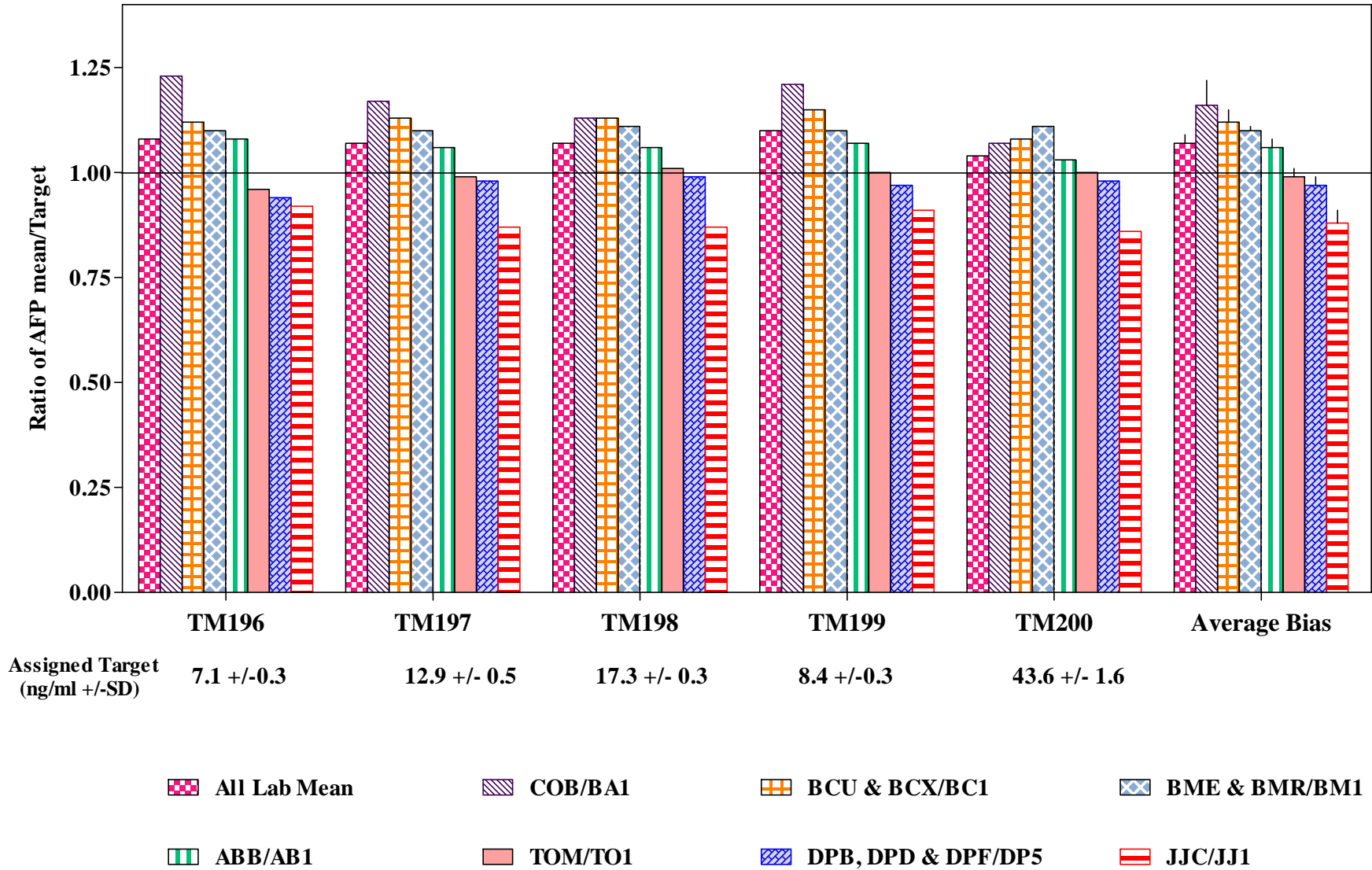


Figure 7

PSA PT 5/09 Method Comparison

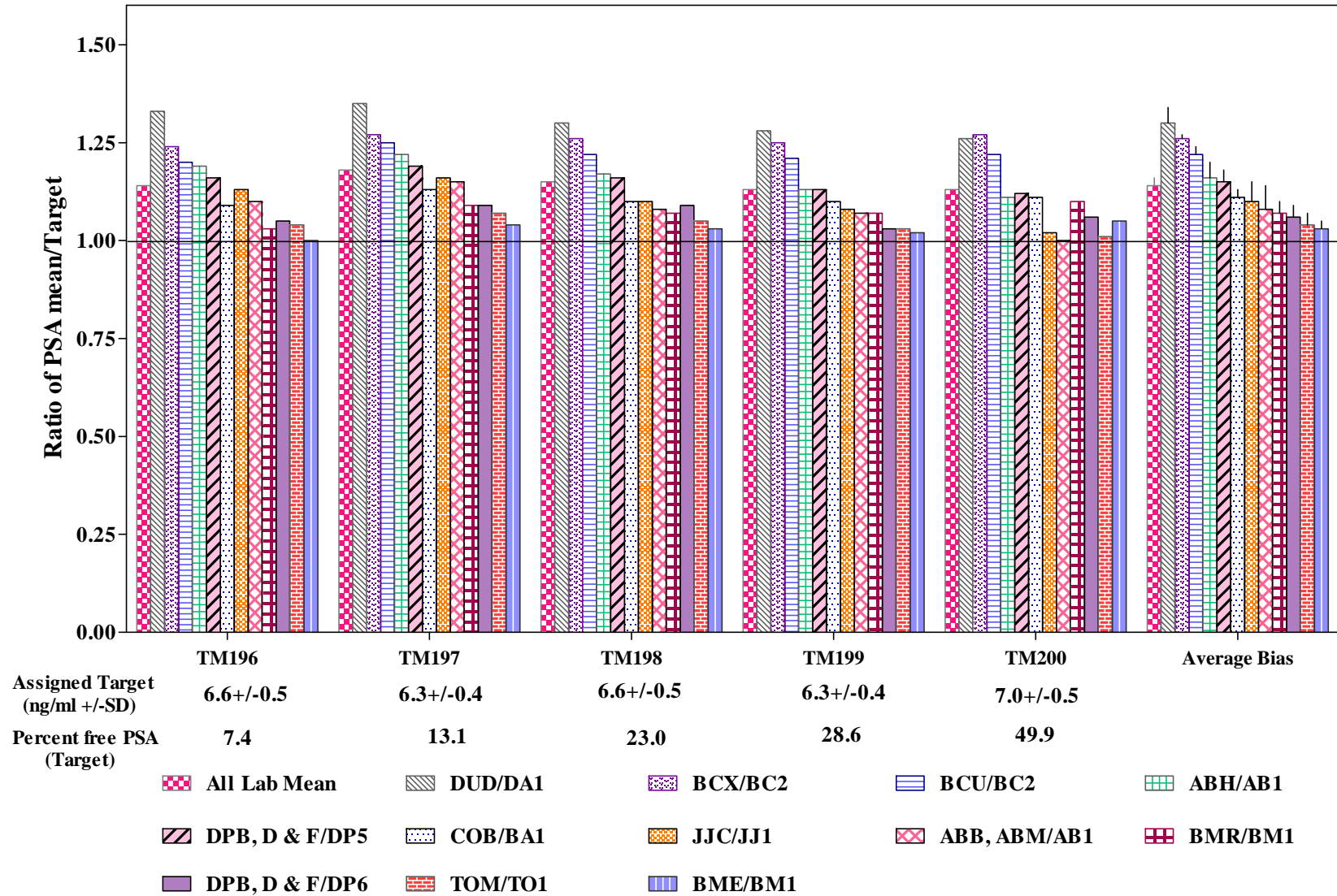


Figure 8

Free PSA PT 5/09 Method Comparison

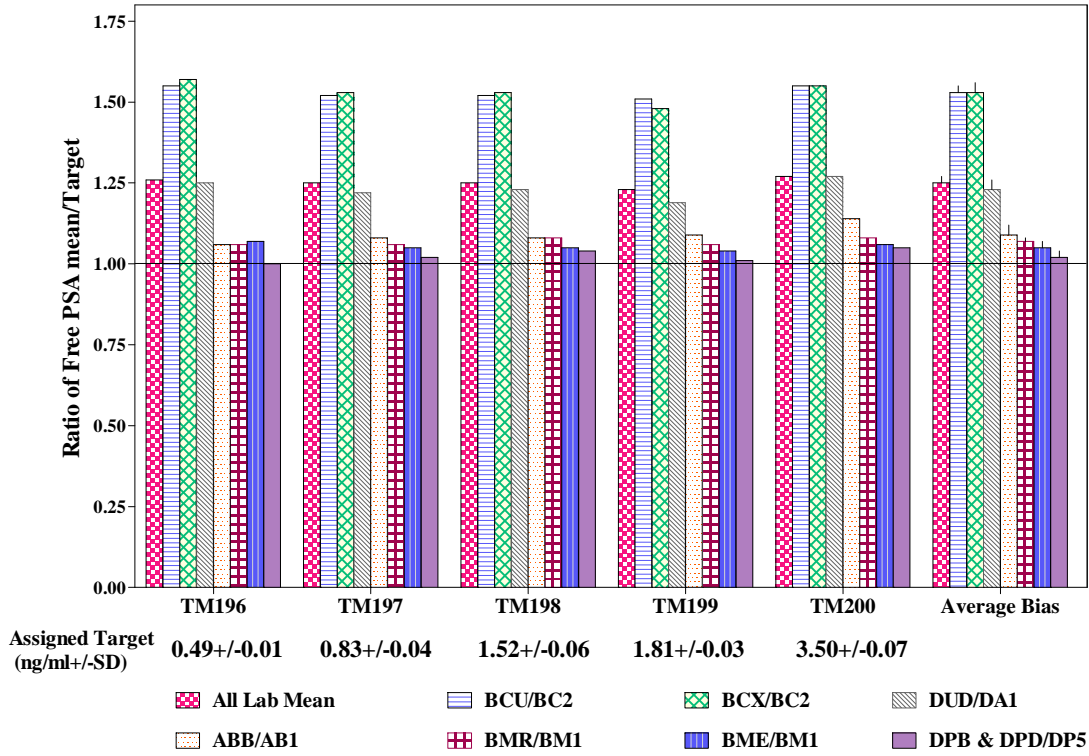


Figure 9

% Free PSA PT 5/09 Method Comparison

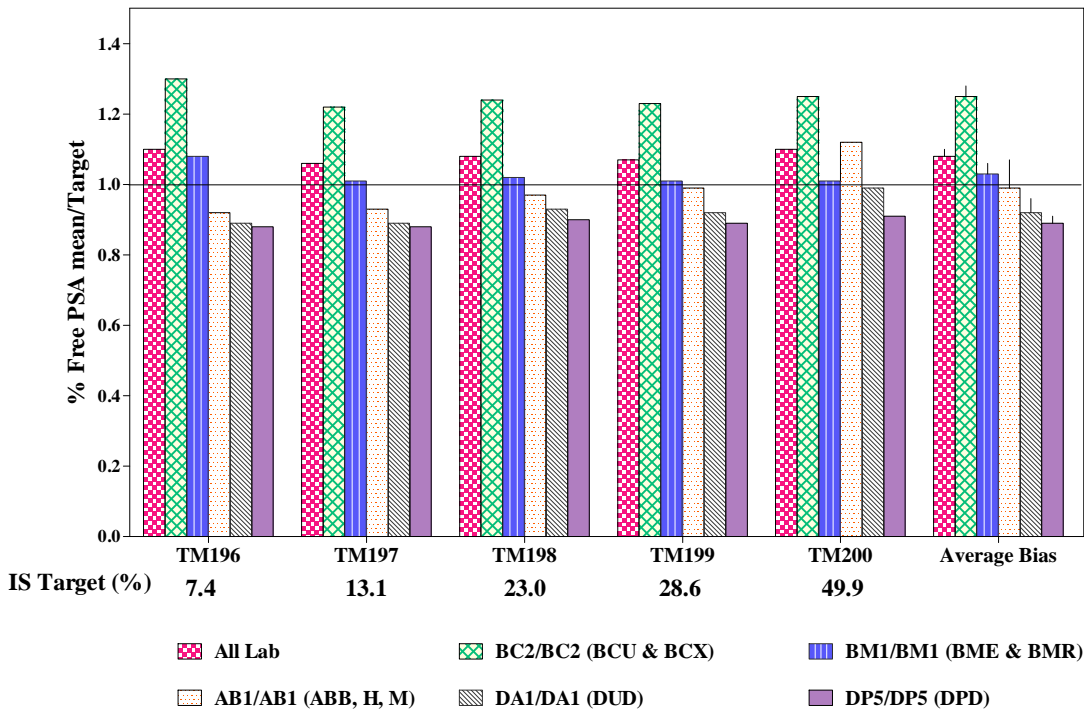
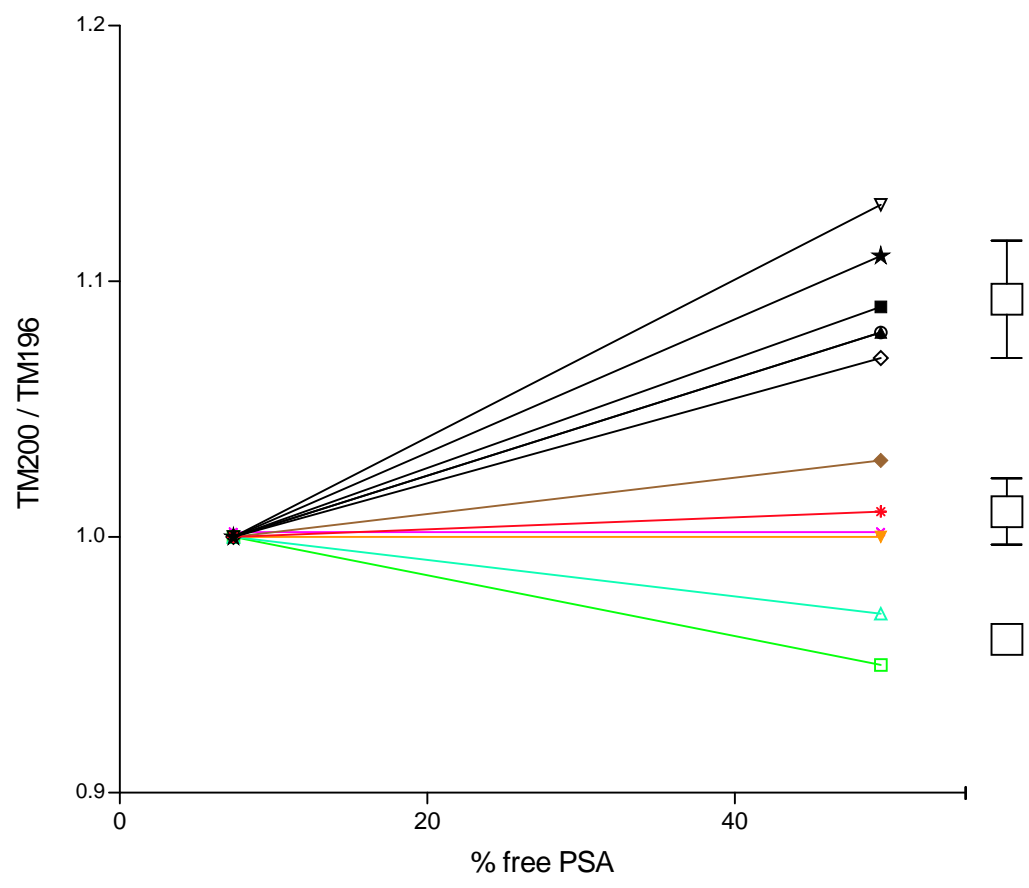


Figure 10

PSA equimolarity



- ▽ BMR/BM1
- ★ BME/BM1
- BCX/BC2
- COB/BA1
- ▲ BCU/BC2
- ◇ DPB/DPD/DPF/DP6
- avg high ±SD
- ◆ DPD/DDPF/DP5
- ★ TOM/TO1
- ✱ DUD/DA1
- ▼ ABH/AB1
- avg int ±SD
- JJC/JJ1
- ▲ ABB/ABM
- avg low

New York State Proficiency Test May 2009
Summary of Results

Sample Analyte Method	TM196 CA125	TM197	TM198	TM199	TM200	Average bias					Average bias		
						Sample Analyte Method	TM196 CA125	TM197	TM198	TM199	TM200		
						All lab							
mean	18.3	26.3	57.1	41.4	71.7	mean	18.4	26.2	59.2	42.7	76.3		
SD	3.6	5.0	8.8	6.3	10.1	SD	1.6	1.9	3.6	2.2	3.5		
%CV	19.8%	19.2%	15.4%	15.1%	14.0%	%CV	8.9%	7.2%	6.1%	5.1%	4.6%		
mean+3SD	29.1	41.5	83.4	60.2	101.9	mean+3SD	23.3	31.9	70.0	49.3	86.8		
mean-3SD	7.4	11.2	30.7	22.6	41.6	mean-3SD	13.5	20.6	48.4	36.1	65.8		
N	119	119	116	115	113	N	5	5	5	5	5		
mean/all kit median	1.06	1.07	0.99	1.00	1.00	1.02	kit median	18.0	26.0	58.9	42.4	76.3	
							mean/all kit median	1.06	1.06	1.03	1.04	1.06	1.05
Ortho Clinical Diagnostics Vitros Eci/Q													
Siemens Immulite 1000													
Beckman Unicel & Access/2													
Siemens ADVIA-Centaur													
Siemens Immulite 2000													

New York State Proficiency Test May 2009
Summary of Results

Sample Analyte Method	TM196	TM197	TM198	TM199	TM200	Average bias	Sample Analyte Method	TM196	TM197	TM198	TM199	TM200	Average bias
	CA125 BME/BMR	BM1	Roche Elecsys/Cobas e411 & E170/e601					CA125 DPF	DP5	Siemens Immulite 2500			
mean	16.2	22.6	48.9	35.8	62.8		mean	15.1	22.3	49.8	36.2	60.7	
SD	1.4	1.8	3.3	2.2	3.8		SD	0.5	0.7	1.4	1.6	1.8	
%CV	8.5%	8.1%	6.8%	6.0%	6.1%		%CV	3.3%	3.1%	2.8%	4.5%	2.9%	
mean+3SD	20.3	28.1	58.8	42.3	74.4		mean+3SD	16.6	24.4	54.0	41.2	66.0	
mean-3SD	12.0	17.1	38.9	29.3	51.3		mean-3SD	13.5	20.3	45.6	31.3	55.5	
N	16	16	16	16	16		N	4	4	4	4	4	
kit median	16.1	22.6	49.2	36.2	63.1		kit median	15.0	22.2	49.4	36.2	60.5	
mean/all kit median	0.93	0.92	0.85	0.87	0.88	0.89	mean/all kit median	0.87	0.91	0.87	0.88	0.85	0.87

Sample Analyte Method	TM196	TM197	TM198	TM199	TM200	Average bias	Sample Analyte Method	TM196	TM197	TM198	TM199	TM200
mean	11.4	15.4	36.0	25.5	42.8		*CA125 kit average: mean*	18.7	27.1	59.9	43.6	76.5
N	2	2	2	2	2		SD*	4.1	6.0	12.5	9.2	17.4
mean/all kit median	0.66	0.63	0.63	0.62	0.60	0.63	all kit median*	17.3	24.6	57.5	41.2	71.7
							*excluded Fujirebio/Centocor for insufficient data					

Sample Analyte Method	TM196	TM197	TM198	TM199	TM200	Average bias	Sample Analyte Method	TM196	TM197	TM198	TM199	TM200
mean	12.3	44.6	38.3	17.7	58.2		mean	11.7	45.1	38.5	17.2	59.0
SD	2.9	3.7	3.4	3.1	4.0		SD	2.7	3.6	3.6	3.0	3.4
%CV	23.7%	8.3%	8.8%	17.7%	6.8%		%CV	22.8%	8.1%	9.3%	17.7%	5.8%
mean+3SD	21.1	55.6	48.4	27.1	70.2		mean+3SD	19.8	56.0	49.3	26.3	69.3
mean-3SD	3.6	33.5	28.2	8.3	46.3		mean-3SD	3.7	34.1	27.8	8.0	48.8
N	47	48	48	48	48		N	40	41	41	41	41
kit median	11.7	45.0	37.9	17.0	58.7		kit median	11.7	45.0	37.9	17.0	58.7
mean/all kit median	0.90	1.03	1.01	0.93	1.04	0.98	mean/all kit median	0.85	1.04	1.02	0.90	1.05

Sample Analyte Method	TM196	TM197	TM198	TM199	TM200	Average bias	Sample Analyte Method	TM196	TM197	TM198	TM199	TM200
mean	15.8	41.5	37.0	21.0	53.4		mean	13.8	43.3	37.8	19.1	56.2
SD	1.4	2.5	1.4	0.7	3.8		SD	2.9	2.5	1.1	2.7	4.0
%CV	8.8%	5.9%	3.7%	3.4%	7.2%		all kit median	13.8	43.3	37.8	19.1	56.2
mean+3SD	20.0	48.9	41.1	23.2	64.9							
mean-3SD	11.6	34.1	32.9	18.9	41.9							
N	7	7	7	7	7							
kit median	15.9	42.5	36.4	21.2	53.9							
mean/all kit median	1.15	0.96	0.98	1.10	0.95	1.03						

New York State Proficiency Test May 2009
Summary of Results

Sample Analyte Method	TM196 CA15-3	TM197	TM198	TM199	TM200	Average bias					Average bias		
						Sample Analyte Method	TM196 CA15-3	TM197	TM198	TM199		TM200	
						All lab							
mean	18.5	52.0	46.3	25.8	64.4		Sample Analyte Method	TM196 CA15-3	TM197	TM198	TM199	TM200	
SD	4.1	12.5	11.4	6.0	15.1		mean	ABH	AB1	Abbott Architect			
%CV	22.1%	24.0%	24.6%	23.2%	23.4%		N	2	2	2	2	2	
mean+3SD	30.7	89.5	80.4	43.7	109.6		mean/all kit median	1.31	1.26	1.27	1.29	1.24	1.27
mean-3SD	6.2	14.6	12.2	7.9	19.2								
N	56	56	56	56	56		Sample Analyte Method	TM196 CA15-3	TM197	TM198	TM199	TM200	
mean/all kit median	1.09	1.13	1.13	1.10	1.10	1.11	mean	JJC	JJ1	Ortho Clinical Vitros Eci/Q			
						Siemens ADVIA-Centaur							
mean	21.6	63.9	56.9	31.0	77.2		SD	0.8	1.7	2.2	1.0	2.4	
SD	2.5	4.0	3.9	3.1	8.4		%CV	4.7%	3.8%	5.4%	4.6%	4.1%	
%CV	11.6%	6.2%	6.8%	10.0%	10.9%		mean+3SD	18.4	50.2	46.9	25.0	65.9	
mean+3SD	29.1	75.9	68.6	40.3	102.4		mean-3SD	13.8	39.9	33.8	18.9	51.4	
mean-3SD	14.1	52.0	45.3	21.7	51.9		N	4	4	4	4	4	
N	18	17	17	18	18		kit median	16.2	45.2	40.4	22.1	58.1	
kit median	22.1	63.0	56.4	30.9	79.2	1.34	mean/all kit median	0.95	0.98	0.99	0.93	1.00	0.97
mean/all kit median	1.28	1.39	1.39	1.32	1.32								
						Roche Elecsys/Cobas e411 & E170/ e601							
mean	21.8	62.3	55.9	30.1	76.4		mean	15.3	40.7	35.9	20.8	50.1	
SD	1.7	5.0	4.3	2.5	3.7		SD	1.0	1.9	1.9	0.9	2.2	
%CV	7.8%	8.0%	7.8%	8.4%	4.8%		%CV	6.6%	4.7%	5.2%	4.3%	4.3%	
mean+3SD	26.9	77.3	68.9	37.7	87.5		mean+3SD	18.4	46.5	41.5	23.5	56.6	
mean-3SD	16.6	47.3	42.9	22.5	65.4		mean-3SD	12.3	35.0	30.3	18.1	43.7	
N	10	10	10	10	10		N	10	10	10	10	10	
kit median	21.3	62.4	55.8	30.1	75.8		kit median	15.7	41.2	36.3	21.0	50.7	
mean/all kit median	1.29	1.36	1.37	1.28	1.30	1.32	mean/all kit median	0.91	0.89	0.88	0.88	0.86	0.88
						Beckman Unicel & Access/2							
mean	16.9	45.9	40.9	23.5	57.2		mean	11.5	31.4	28.0	15.6	39.2	
SD	1.0	2.7	1.9	1.5	5.6		SD	0.8	1.6	1.3	0.7	3.3	
%CV	5.8%	6.0%	4.7%	6.5%	9.8%		%CV	7.4%	5.1%	4.7%	4.6%	8.5%	
mean+3SD	19.9	54.1	46.7	28.1	74.1		mean+3SD	14.1	36.2	31.9	17.8	49.1	
mean-3SD	14.0	37.6	35.2	18.9	40.3		mean-3SD	9.0	26.6	24.1	13.4	29.3	
N	5	5	5	5	5		N	6	6	6	6	6	
kit median	16.6	45.3	42.1	22.7	58.1		kit median	11.8	31.7	28.3	15.6	39.5	
mean/all kit median	1.00	1.00	1.00	1.00	0.98	1.00	mean/all kit median	0.68	0.68	0.68	0.66	0.67	0.68
						Siemens Immulite 1000/2000/2500							
mean	21.8	62.3	55.9	30.1	76.4								
SD	1.7	5.0	4.3	2.5	3.7								
%CV	7.8%	8.0%	7.8%	8.4%	4.8%								
mean+3SD	26.9	77.3	68.9	37.7	87.5								
mean-3SD	16.6	47.3	42.9	22.5	65.4								
N	10	10	10	10	10								
kit median	21.3	62.4	55.8	30.1	75.8								
mean/all kit median	1.29	1.36	1.37	1.28	1.30	1.32							
						Abbott AxSym							
mean	16.9	45.9	40.9	23.5	57.2								
SD	1.0	2.7	1.9	1.5	5.6								
%CV	5.8%	6.0%	4.7%	6.5%	9.8%								
mean+3SD	19.9	54.1	46.7	28.1	74.1								
mean-3SD	14.0	37.6	35.2	18.9	40.3								
N	5	5	5	5	5								
kit median	16.6	45.3	42.1	22.7	58.1								
mean/all kit median	1.00	1.00	1.00	1.00	0.98	1.00							
						BCU/BCX							
mean	17.9	49.6	44.3	24.8	61.7								
SD	4.0	12.1	10.9	5.9	14.4								
all kit median	16.9	45.9	40.9	23.5	58.6								

New York State Proficiency Test May 2009
Summary of Results

Sample Analyte Method	TM196 CA19-9	TM197	TM198	TM199	TM200	Average bias					Average bias	
						Sample Analyte Method	TM196 CA19-9	TM197 BC1	TM198 Beckman Unidel & Access/2	TM199		TM200
All lab (COB included)												
mean	19.3	41.6	55.3	56.8	31.7	11.9	27.9	36.4	37.9	20.8		
SD	7.4	15.0	21.0	21.2	11.6	0.9	2.1	2.7	2.7	1.4		
%CV	38.5%	36.1%	37.9%	37.3%	36.6%	7.6%	7.3%	7.3%	7.2%	6.9%		
mean+3SD	41.6	86.6	118.3	120.3	66.5	14.7	34.1	44.4	46.1	25.1		
mean-3SD	-3.0	-3.4	-7.6	-6.7	-3.1	9.2	21.8	28.5	29.7	16.5		
N	61	61	61	61	61	13	13	13	13	13		
mean/all kit median	1.48	1.46	1.50	1.48	1.47	1.48	kit median 11.7	28.2	37.1	37.6	20.9	
							mean/all kit median 0.91	0.98	0.99	0.99	0.96	0.97
Average bias												
Sample Analyte Method	TM196 CA19-9	TM197	TM198	TM199	TM200	Average bias					Average bias	
All lab (COB excluded)												
mean	12.3	27.2	35.1	36.5	20.6	9.5	18.7	23.8	24.1	15.6		
SD	3.2	7.6	10.5	10.8	5.8	0.4	0.7	0.9	0.8	0.5		
%CV	26.2%	27.8%	29.9%	29.7%	28.3%	4.3%	3.9%	3.8%	3.5%	3.2%		
mean+3SD	22.0	50.0	66.5	69.0	38.2	10.7	20.9	26.6	26.6	17.1		
mean-3SD	2.6	4.5	3.6	4.0	3.1	8.2	16.5	21.1	21.6	14.1		
N	29	29	29	29	29	6	6	6	6	6		
mean/all kit median	1.03	0.97	0.96	0.96	0.99	0.98	kit median 9.4	18.7	23.6	24.3	15.7	
							mean/all kit median 0.72	0.66	0.65	0.63	0.72	0.67
Average bias												
Sample Analyte Method	TM196 CA19-9	TM197	TM198	TM199	TM200	Average bias					Average bias	
COB												
mean	25.6	54.6	73.7	75.2	41.7							
SD	3.2	3.9	4.4	5.2	3.4							
%CV	12.7%	7.1%	6.0%	6.9%	8.2%							
mean+3SD	35.3	66.2	87.0	90.7	52.1							
mean-3SD	15.9	43.1	60.4	59.7	31.4							
N	32	32	32	32	32							
kit median	25.9	55.0	74.2	76.3	41.9							
mean/all kit median	1.96	1.92	2.00	1.95	1.93	1.95						
Average bias												
Sample Analyte Method	TM196 CA19-9	TM197	TM198	TM199	TM200	Average bias					Average bias	
Siemens ADVIA-Centaur												
mean	25.6	54.6	73.7	75.2	41.7							
SD	3.2	3.9	4.4	5.2	3.4							
%CV	12.7%	7.1%	6.0%	6.9%	8.2%							
mean+3SD	35.3	66.2	87.0	90.7	52.1							
mean-3SD	15.9	43.1	60.4	59.7	31.4							
N	32	32	32	32	32							
kit median	25.9	55.0	74.2	76.3	41.9							
mean/all kit median	1.96	1.92	2.00	1.95	1.93	1.95						
Average bias												
Sample Analyte Method	TM196 CA19-9	TM197	TM198	TM199	TM200	Average bias					Average bias	
BME/BMR												
mean	14.2	29.1	37.2	39.0	22.5							
SD	0.9	1.9	2.0	2.0	1.3							
%CV	6.3%	6.6%	5.4%	5.2%	5.7%							
mean+3SD	16.9	34.8	43.3	45.1	26.4							
mean-3SD	11.5	23.4	31.2	32.9	18.6							
N	6	6	6	6	6							
kit median	14.1	28.5	36.3	38.6	22.3							
mean/all kit median	1.09	1.02	1.01	1.01	1.04	1.03						
Average bias												
Sample Analyte Method	TM196 CA19-9	TM197	TM198	TM199	TM200	Average bias					Average bias	
Roche Elecsys/Cobas e411 & E170/e601												
mean	14.2	29.1	37.2	39.0	22.5							
SD	0.9	1.9	2.0	2.0	1.3							
%CV	6.3%	6.6%	5.4%	5.2%	5.7%							
mean+3SD	16.9	34.8	43.3	45.1	26.4							
mean-3SD	11.5	23.4	31.2	32.9	18.6							
N	6	6	6	6	6							
kit median	14.1	28.5	36.3	38.6	22.3							
mean/all kit median	1.09	1.02	1.01	1.01	1.04	1.03						
Average bias												

* Note: The COB means were not included in the calculation of the all kit means (SDs) because the results from this method were very different from the results of all the others. However, this method was included in the all kit median calculation.

New York State Proficiency Test May 2009
Summary of Results

Sample Analyte Method	TM196 CEA	TM197	TM198	TM199	TM200	Average		TM196 CEA	TM197	TM198	TM199	TM200	Average bias
						bias							
Method			All lab					BCX	BC4/BC5	Beckman Access/2 original & CEA2			
mean	3.9	9.0	13.1	17.5	12.1		mean	4.1	9.5	13.9	17.9	12.5	
SD	0.5	1.1	1.7	2.6	1.8		SD	0.3	0.5	0.8	1.1	0.7	
%CV	12.2%	12.1%	12.9%	14.7%	14.8%		%CV	6.1%	5.7%	5.5%	6.2%	6.0%	
mean+3SD	5.3	12.3	18.2	25.2	17.5		mean+3SD	4.9	11.1	16.2	21.3	14.7	
mean-3SD	2.5	5.7	8.1	9.8	6.7		mean-3SD	3.4	7.9	11.6	14.6	10.2	
N	166	167	170	175	172		N	12	12	12	12	12	
kit median	0.99	0.97	0.99	0.99	0.99	0.99	kit median	4.2	9.7	13.8	17.8	12.3	
mean/all kit median							mean/all kit median	1.05	1.03	1.05	1.02	1.02	1.03
Sample Analyte Method	TM196 CEA	TM197	TM198	TM199	TM200		Sample Analyte Method	TM196 CEA	TM197	TM198	TM199	TM200	
Method	JJC	JJ1	Ortho Clinical Diagnostics Vitros Eci/Q				Method	COB	BA2	Siemens ADVIA-Centaur original CEA			
mean	9.5	15.1	18.9	22.8	17.6		mean	4.0	9.3	13.6	18.0	12.5	
SD	0.6	0.9	0.8	0.8	0.7		SD	0.4	0.5	0.5	0.8	0.4	
%CV	6.5%	5.7%	4.4%	3.7%	4.2%		%CV	10.2%	4.9%	3.9%	4.3%	3.1%	
mean+3SD	11.3	17.6	21.4	25.3	19.8		mean+3SD	5.3	10.6	15.2	20.3	13.6	
mean-3SD	7.6	12.5	16.4	20.3	15.4		mean-3SD	2.8	7.9	12.0	15.7	11.3	
N	10	10	10	10	10		N	19	19	19	18	19	
kit median	9.6	14.8	18.8	23.1	17.5		kit median	4.2	9.3	13.6	18.1	12.4	
mean/all kit median	2.41	1.62	1.43	1.30	1.44	1.64	mean/all kit median	1.02	1.00	1.03	1.02	1.02	1.02
Sample Analyte Method	TM196 CEA	TM197	TM198	TM199	TM200		Sample Analyte Method	TM196 CEA	TM197	TM198	TM199	TM200	
Method	TOM	TO1	TOSOH AIA/ST-A1A				Method	ABH	AB1	Abbott Architect			
mean	5.1	11.4	16.3	22.2	15.9		mean	4.3	9.3	13.1	17.1	12.0	
SD	0.3	0.7	1.2	1.2	0.9		SD	0.1	0.6	0.2	0.2	0.2	
%CV	5.2%	5.8%	7.5%	5.2%	5.6%		%CV	3.0%	6.0%	1.3%	1.2%	1.7%	
mean+3SD	5.9	13.4	20.0	25.7	18.5		mean+3SD	4.6	10.9	13.6	17.7	12.6	
mean-3SD	4.3	9.4	12.7	18.7	13.2		mean-3SD	3.9	7.6	12.5	16.5	11.3	
N	9	9	9	9	9		N	4	4	4	4	4	
kit median	5.0	11.3	16.3	22.5	15.7		kit median	4.3	9.1	13.1	17.1	12.0	
mean/all kit median	1.31	1.23	1.24	1.26	1.29	1.27	mean/all kit median	1.08	1.00	0.99	0.97	0.98	1.00
Sample Analyte Method	TM196 CEA	TM197	TM198	TM199	TM200		Sample Analyte Method	TM196 CEA	TM197	TM198	TM199	TM200	
Method	DPD/DPF	DP5	Siemens Immulite 1000/2000/2500				Method	COB	BA3	Siemens ADVIA-Centaur new antibody			
mean	3.9	9.7	14.5	19.1	13.3		mean	3.9	9.0	13.2	17.6	12.2	
SD	0.4	0.9	0.9	1.7	1.0		SD	0.4	0.6	0.7	0.9	0.7	
%CV	10.3%	9.2%	6.1%	8.8%	7.8%		%CV	10.5%	6.7%	5.0%	5.4%	5.6%	
mean+3SD	5.1	12.4	17.1	24.2	16.4		mean+3SD	5.1	10.9	15.2	20.4	14.3	
mean-3SD	2.7	7.0	11.8	14.1	10.2		mean-3SD	2.7	7.2	11.2	14.7	10.2	
N	20	20	20	19	20		N	41	41	41	41	41	
kit median	3.9	9.7	14.5	18.9	13.2		kit median	3.9	9.0	13.2	17.5	12.4	
mean/all kit median	1.00	1.05	1.09	1.09	1.08	1.06	mean/all kit median	0.99	0.98	1.00	1.00	1.00	0.99

New York State Proficiency Test May 2009
Summary of Results

Sample Analyte Method	TM196	TM197	TM198	TM199	TM200	Average bias	Sample Analyte Method	TM196	TM197	TM198	TM199	TM200	Average bias
	CEA	BC4/BC5	Beckman Unicel original & CEA2						CEA	BM1	Roche E170 & Cobas e601		
mean	3.7	9.0	12.4	15.6	11.2		mean	3.4	7.5	10.8	13.9	9.7	
SD	0.2	0.7	0.9	0.7	0.5		SD	0.2	0.3	0.5	0.6	0.4	
%CV	5.9%	7.7%	7.3%	4.3%	4.7%		%CV	6.6%	4.0%	4.3%	4.0%	4.4%	
mean+3SD	4.4	11.1	15.2	17.7	12.7		mean+3SD	4.1	8.4	12.2	15.6	11.0	
mean-3SD	3.1	6.9	9.7	13.6	9.6		mean-3SD	2.8	6.6	9.4	12.2	8.4	
N	16	16	16	16	16		N	17	17	17	17	17	
kit median	3.8	9.2	12.4	15.4	11.1		kit median	3.5	7.5	11.0	14.0	9.7	
mean/all kit median	0.95	0.97	0.94	0.89	0.91	0.93	mean/all kit median	0.88	0.81	0.82	0.79	0.79	0.82

Sample Analyte Method	TM196	TM197	TM198	TM199	TM200		Sample Analyte Method	TM196	TM197	TM198	TM199	TM200
mean	3.7	8.3	11.8	16.2	10.9		mean					
SD	0.3	0.8	1.1	1.3	0.9		SD					
%CV	8.8%	9.0%	9.0%	7.9%	8.1%		%CV					
mean+3SD	4.7	10.6	14.9	20.0	13.5		mean+3SD					
mean-3SD	2.7	6.1	8.6	12.4	8.2		mean-3SD					
N	17	17	17	17	17		N					
kit median	3.7	8.3	11.5	16.3	10.9		kit median					
mean/all kit median	0.94	0.90	0.89	0.92	0.89	0.91	mean/all kit median					

Sample Analyte Method	TM196	TM197	TM198	TM199	TM200	
mean	3.4	7.5	11.0	13.9	9.8	
SD	0.2	0.3	0.5	0.8	0.5	
%CV	5.5%	4.2%	4.2%	5.5%	5.1%	
mean+3SD	4.0	8.5	12.3	16.2	11.3	
mean-3SD	2.8	6.6	9.6	11.6	8.3	
N	10	10	10	10	10	
kit median	3.4	7.5	11.0	14.0	9.9	
mean/all kit median	0.87	0.81	0.83	0.79	0.80	0.82

Sample Analyte Method	TM196	TM197	TM198	TM199	TM200		Sample Analyte Method	TM196	TM197	TM198	TM199	TM200	
mean	7.6	13.8	18.5	9.2	45.3		mean	8.7	15.1	19.5	10.2	46.8	
SD	1.0	1.4	1.8	1.0	3.6		SD	0.7	0.6	0.9	0.8	2.3	
%CV	12.7%	10.4%	9.6%	11.2%	8.0%		%CV	8.6%	4.0%	4.7%	7.8%	4.9%	
mean+3SD	10.6	18.1	23.8	12.3	56.2		mean+3SD	11.0	16.9	22.3	12.5	53.7	
mean-3SD	4.7	9.5	13.1	6.1	34.5		mean-3SD	6.5	13.3	16.7	7.8	39.9	
N	103	105	105	104	104		N	26	26	27	27	26	
mean/target	1.08	1.07	1.07	1.10	1.04	1.07	kit median	8.8	15.1	19.6	10.1	47.0	
							mean/target	1.23	1.17	1.13	1.21	1.07	1.16

New York State Proficiency Test May 2009
Summary of Results

Sample Analyte	Average					Sample Analyte	Average					Average bias	
	TM196 AFP	TM197	TM198	TM199	TM200		bias	TM196 AFP DPB/DPF	TM197	TM198	TM199		TM200
Method	BCU/BCX	BC1	Beckman Unicel & Access/2			Method	DPD/DPF	DP5	Siemens Immulite 1000/2000/2500				
mean	7.9	14.5	19.5	9.7	47.0	mean	6.7	12.6	17.1	8.2	42.8		
SD	0.8	1.1	1.6	0.6	3.0	SD	0.6	1.1	1.6	0.8	3.2		
%CV	9.6%	7.6%	8.4%	6.3%	6.5%	%CV	8.2%	8.6%	9.2%	9.3%	7.5%		
mean+3SD	10.2	17.8	24.4	11.5	56.1	mean+3SD	8.3	15.9	21.8	10.5	52.5		
mean-3SD	5.6	11.2	14.6	7.9	37.8	mean-3SD	5.0	9.4	12.4	5.9	33.2		
N	17	17	17	17	17	N	25	25	25	25	25		
kit median	8.0	14.6	19.8	9.6	47.9	kit median	6.6	12.6	16.9	8.1	43.0		
mean/target	1.12	1.13	1.13	1.15	1.08	1.12	mean/target	0.94	0.98	0.99	0.97	0.98	0.97

Sample Analyte	Average					Sample Analyte	Average					Average bias	
	TM196 AFP	TM197	TM198	TM199	TM200		bias	TM196 AFP	TM197	TM198	TM199		TM200
Method	BME/BMR	BM1	Roche Elecsys/Cobas e411 & E170/ e601			Method	JJC	JJ1	Ortho Clinical Vitros Eci/Q				
mean	7.8	14.1	19.3	9.3	48.2	mean	6.5	11.3	15.0	7.6	37.4		
SD	0.4	0.9	0.9	0.4	2.1	SD	0.1	0.1	0.4	0.2	1.0		
%CV	4.6%	6.4%	4.5%	4.8%	4.3%	%CV	1.5%	0.8%	2.4%	2.7%	2.8%		
mean+3SD	8.9	16.9	21.9	10.6	54.4	mean+3SD	6.8	11.6	16.1	8.2	40.5		
mean-3SD	6.7	11.4	16.6	7.9	42.0	mean-3SD	6.2	11.0	13.9	7.0	34.2		
N	15	15	15	15	15	N	4	4	4	4	4		
kit median	7.9	14.2	19.1	9.3	48.2	kit median	6.6	11.3	15.1	7.7	37.2		
mean/target	1.10	1.10	1.11	1.10	1.11	1.10	mean/target	0.92	0.87	0.87	0.91	0.86	0.88

Sample Analyte	Average					Sample	Average				
	TM196 AFP	TM197	TM198	TM199	TM200		bias	TM196	TM197	TM198	TM199
Method	ABB	AB1	Abbott AxSym			Method	AFP kit average:				
mean	7.6	13.7	18.3	9.0	45.1	mean	7.5	13.4	18.0	8.9	44.4
SD	0.5	1.2	1.5	0.6	2.7	SD	0.8	1.3	1.6	0.9	3.6
%CV	6.0%	8.5%	8.2%	6.5%	6.0%	all kit median	7.6	13.7	18.3	9.0	45.1
mean+3SD	9.0	17.1	22.8	10.8	53.2						
mean-3SD	6.3	10.2	13.8	7.3	37.0						
N	11	11	11	11	11						
kit median	7.7	13.4	18.6	9.0	44.4						
mean/target	1.08	1.06	1.06	1.07	1.03	1.06					

Sample Analyte	Average					Sample	Average					
	TM196 AFP	TM197	TM198	TM199	TM200		bias	TM196	TM197	TM198	TM199	TM200
Method	TOM	TO1	TOSOH A1A/ST-A1A			Method	*IS target	7.1	12.9	17.3	8.4	43.6
mean	6.8	12.8	17.5	8.4	43.6	SD (+/-)	0.3	0.5	0.3	0.3	1.6	
SD	1.5	1.6	1.8	1.8	2.7	% CV	4.3%	3.6%	1.8%	3.1%	3.6%	
%CV	22.1%	12.6%	10.5%	21.3%	6.2%	high (30%)	9.2	16.8	22.5	10.9	56.7	
mean+3SD	11.3	17.6	23.0	13.8	51.6	low (30%)	5.0	9.0	12.1	5.9	30.5	
mean-3SD	2.3	8.0	12.0	3.0	35.5	* target value from a traceable AFP standard						
N	5	5	5	5	5							
kit median	7.3	13.4	18.2	8.9	43.8							
mean/target	0.96	0.99	1.01	1.00	1.00	0.99						

New York State Proficiency Test May 2009
Summary of Results

Sample Analyte Method	TM196 PSA	TM197	TM198	TM199	TM200	Average bias	Sample Analyte Method	TM196 PSA ABH	TM197 AB1	TM198	TM199	TM200	Average bias
mean	7.5	7.4	7.6	7.1	7.9		mean	7.8	7.7	7.7	7.1	7.8	
SD	0.8	0.7	0.7	0.7	0.8		SD	0.4	0.4	0.2	0.4	0.2	
%CV	10.0%	9.4%	9.2%	9.5%	9.9%		%CV	5.0%	4.6%	2.1%	5.2%	2.6%	
mean+3SD	9.8	9.5	9.6	9.2	10.2		mean+3SD	9.0	8.7	8.2	8.2	8.4	
mean-3SD	5.3	5.3	5.5	5.1	5.5		mean-3SD	6.7	6.6	7.2	6.0	7.2	
N	261	261	261	260	261		N	5	5	5	5	5	
mean/target	1.14	1.18	1.15	1.13	1.13	1.14	kit median	7.7	7.8	7.7	7.1	7.8	
							mean/target	1.19	1.22	1.17	1.13	1.11	1.16

Sample Analyte Method	TM196 PSA	TM197	TM198	TM199	TM200	Average bias	Sample Analyte Method	TM196 PSA DPB/DPD/DPF	TM197 DP5	TM198	TM199	TM200	Average bias
mean	8.8	8.5	8.6	8.1	8.8		mean	7.6	7.5	7.7	7.1	7.8	
SD	0.5	0.4	0.5	0.4	0.5		SD	0.7	0.6	0.6	0.8	0.7	
%CV	5.3%	4.8%	5.5%	5.2%	5.8%		%CV	8.8%	7.9%	8.3%	11.1%	9.3%	
mean+3SD	10.2	9.7	10.0	9.3	10.4		mean+3SD	9.7	9.3	9.6	9.5	10.0	
mean-3SD	7.4	7.3	7.1	6.8	7.3		mean-3SD	5.6	5.7	5.8	4.7	5.7	
N	28	28	28	28	28		N	28	28	28	27	28	
kit median	8.9	8.6	8.7	8.1	8.9		kit median	7.7	7.4	7.8	7.2	7.8	
mean/target	1.33	1.35	1.30	1.28	1.26	1.30	mean/target	1.16	1.19	1.16	1.13	1.12	1.15

Sample Analyte Method	TM196 PSA	TM197	TM198	TM199	TM200	Average bias	Sample Analyte Method	TM196 PSA COB	TM197 BA1	TM198	TM199	TM200	Average bias
mean	8.2	8.0	8.3	7.9	8.9		mean	7.2	7.1	7.3	6.9	7.8	
SD	0.4	0.3	0.4	0.3	0.4		SD	0.4	0.4	0.4	0.3	0.4	
%CV	4.7%	3.3%	4.2%	4.4%	4.2%		%CV	4.9%	5.5%	5.0%	5.0%	4.8%	
mean+3SD	9.3	8.8	9.4	8.9	10.0		mean+3SD	8.3	8.3	8.4	7.9	8.9	
mean-3SD	7.0	7.2	7.3	6.8	7.8		mean-3SD	6.1	5.9	6.2	5.9	6.7	
N	30	29	30	30	30		N	57	58	56	58	57	
kit median	8.2	8.1	8.3	7.9	9.0		kit median	7.2	7.1	7.3	6.9	7.8	
mean/target	1.24	1.27	1.26	1.25	1.27	1.26	mean/target	1.09	1.13	1.10	1.10	1.11	1.11

Sample Analyte Method	TM196 PSA	TM197	TM198	TM199	TM200	Average bias	Sample Analyte Method	TM196 PSA JJC	TM197 JJ1	TM198	TM199	TM200	Average bias
mean	7.9	7.9	8.0	7.6	8.5		mean	7.5	7.3	7.3	6.8	7.1	
SD	0.3	0.3	0.4	0.4	0.4		SD	0.4	0.4	0.3	0.4	0.3	
%CV	4.1%	3.5%	4.8%	4.9%	5.0%		%CV	5.4%	4.9%	4.5%	6.1%	4.8%	
mean+3SD	8.9	8.7	9.2	8.7	9.8		mean+3SD	8.7	8.4	8.3	8.1	8.2	
mean-3SD	6.9	7.1	6.9	6.5	7.2		mean-3SD	6.3	6.2	6.3	5.6	6.1	
N	24	24	24	24	24		N	18	18	18	18	18	
kit median	8.0	8.0	8.0	7.7	8.6		kit median	7.4	7.2	7.3	6.8	7.1	
mean/target	1.20	1.25	1.22	1.21	1.22	1.22	mean/target	1.13	1.16	1.10	1.08	1.02	1.10

New York State Proficiency Test May 2009
Summary of Results

Sample Analyte Method	Average bias					Sample Analyte Method	Average bias					
	TM196 PSA ABB/ABM	TM197 AB1	TM198 Abbott Asxym & Imx	TM199	TM200		TM196 PSA BME	TM197 BM1	TM198 Roche Elecsys/Cobas e411	TM199	TM200	
mean	7.2	7.3	7.1	6.7	7.0	mean	6.6	6.5	6.8	6.4	7.3	1.03
SD	0.5	0.5	0.4	0.4	0.4	SD	0.4	0.4	0.4	0.4	0.4	
%CV	6.3%	6.7%	5.3%	6.6%	6.0%	%CV	6.8%	6.5%	5.8%	5.7%	5.9%	
mean+3SD	8.6	8.7	8.2	8.1	8.2	mean+3SD	7.9	7.8	8.0	7.5	8.6	
mean-3SD	5.9	5.8	6.0	5.4	5.7	mean-3SD	5.3	5.3	5.6	5.3	6.0	
N	19	19	19	19	19	N	16	16	16	16	16	
kit median	7.2	7.1	7.2	6.7	7.1	kit median	6.7	6.6	6.9	6.5	7.5	
mean/target	1.10	1.15	1.08	1.07	1.00	mean/target	1.00	1.04	1.03	1.02	1.05	

Sample Analyte Method	Average bias					Sample Analyte Method	Average bias					
	TM196 PSA BMR	TM197 BM1	TM198 Roche E170/Cobas e601	TM199	TM200		TM196	TM197	TM198	TM199	TM200	
mean	6.8	6.9	7.1	6.7	7.7	mean	7.5	7.4	7.5	7.0	7.8	1.07
SD	0.4	0.2	0.4	0.3	0.4	SD	0.6	0.6	0.6	0.5	0.7	
%CV	5.2%	3.3%	5.0%	4.6%	5.2%	%CV	7.4	7.3	7.3	6.9	7.7	
mean+3SD	7.9	7.6	8.2	7.7	8.9	mean+3SD						
mean-3SD	5.7	6.2	6.0	5.8	6.5	mean-3SD						
N	20	19	20	20	20	N						
kit median	6.8	6.9	7.2	6.8	7.8	kit median						
mean/target	1.03	1.09	1.07	1.07	1.10	mean/target						

Sample Analyte Method	Average bias					Sample Analyte Method	Average bias					
	TM196 PSA DPB/DPD/DPF	TM197 DP6	TM198 Siemens Immulite 1000/2000/2500 3rd gen.	TM199	TM200		TM196	TM197	TM198	TM199	TM200	
mean	6.9	6.9	7.2	6.5	7.4	mean	6.6	6.3	6.6	6.3	7.0	1.06
SD	0.5	0.5	0.6	0.7	0.9	SD	0.5	0.4	0.5	0.4	0.50	
%CV	6.9%	6.9%	8.8%	11.3%	12.7%	%CV	7.0%	6.9%	7.6%	6.5%	7.6%	
mean+3SD	8.3	8.3	9.1	8.7	10.3	high (25%)	8.3	7.9	8.3	7.9	8.8	
mean-3SD	5.5	5.5	5.3	4.3	4.6	low (25%)	5.0	4.7	5.0	4.7	5.3	
N	7	7	7	7	7	* target value from a traceable PSA standard						
kit median	7.0	6.9	7.3	6.7	7.3	kit median						
mean/target	1.05	1.09	1.09	1.03	1.06	mean/target						

Sample Analyte Method	Average bias					Sample Analyte Method	Average bias					
	TM196 PSA TOM	TM197 TO1	TM198 TOSOH AIA/ST-A1A	TM199	TM200		TM196	TM197	TM198	TM199	TM200	
mean	6.9	6.7	7.0	6.5	7.0	mean						1.04
SD	0.4	0.4	0.4	0.3	0.5	SD						
%CV	6.0%	5.4%	6.0%	5.3%	6.6%	%CV						
mean+3SD	8.1	7.8	8.2	7.5	8.4	mean+3SD						
mean-3SD	5.6	5.7	5.7	5.4	5.6	mean-3SD						
N	14	14	14	14	14	N						
kit median	6.9	6.7	7.1	6.6	7.1	kit median						
mean/target	1.04	1.07	1.05	1.03	1.01	mean/target						

New York State Proficiency Test May 2009
Summary of Results

Sample Analyte	TM196 free PSA	TM197	TM198	TM199	TM200	Average					Average bias		
						bias	Sample Analyte	TM196 free PSA ABB/	TM197	TM198		TM199	TM200
Method			All lab				Method	ABH/ABM	AB1	Abbott Asxym, Architect & Imx			
mean	0.62	1.04	1.90	2.22	4.44		mean	0.52	0.89	1.65	1.98	4.00	
SD	0.13	0.19	0.35	0.41	0.81		SD	0.03	0.05	0.16	0.19	0.34	
%CV	20.3%	18.7%	18.5%	18.4%	18.3%		%CV	6.0%	5.6%	9.4%	9.5%	8.4%	
mean+3SD	0.99	1.62	2.95	3.44	6.88		mean+3SD	0.61	1.04	2.11	2.54	5.01	
mean-3SD	0.24	0.45	0.84	0.99	2.01		mean-3SD	0.42	0.74	1.18	1.41	3.00	
N	84	83	84	84	84		N	6	6	6	6	6	
mean/target	1.26	1.25	1.25	1.23	1.27	1.25	kit median	0.51	0.90	1.65	2.06	4.08	
							mean/target	1.06	1.08	1.08	1.09	1.14	1.09
Sample Analyte	TM196 free PSA	TM197	TM198	TM199	TM200		Sample Analyte	TM196 free PSA	TM197	TM198	TM199	TM200	
Method	BCU	BC2	Beckman Unicel Hybritech calibration				Method	BMR	BM1	Roche E170/Cobas e601			
mean	0.76	1.26	2.32	2.72	5.43		mean	0.52	0.88	1.63	1.92	3.79	
SD	0.04	0.08	0.15	0.20	0.31		SD	0.02	0.02	0.10	0.11	0.17	
%CV	5.7%	6.5%	6.5%	7.4%	5.7%		%CV	3.8%	2.8%	6.1%	5.5%	4.5%	
mean+3SD	0.89	1.51	2.77	3.33	6.36		mean+3SD	0.58	0.95	1.93	2.23	4.30	
mean-3SD	0.63	1.01	1.87	2.12	4.50		mean-3SD	0.46	0.80	1.34	1.60	3.27	
N	17	17	17	17	17		N	12	12	13	13	13	
kit median	0.75	1.27	2.30	2.70	5.47		kit median	0.53	0.89	1.62	1.90	3.77	
mean/target	1.55	1.52	1.52	1.51	1.55	1.53	mean/target	1.06	1.06	1.08	1.06	1.08	1.07
Sample Analyte	TM196 free PSA	TM197	TM198	TM199	TM200		Sample Analyte	TM196 free PSA	TM197	TM198	TM199	TM200	
Method	BCX	BC2	Beckman Access/2 Hybritech calibration				Method	BME	BM1	Roche Elecsys/Cobas e411			
mean	0.77	1.27	2.33	2.69	5.41		mean	0.53	0.87	1.60	1.87	3.73	
SD	0.04	0.04	0.10	0.07	0.16		SD	0.07	0.08	0.13	0.12	0.20	
%CV	5.0%	3.5%	4.1%	2.6%	2.9%		%CV	12.7%	8.7%	7.9%	6.6%	5.4%	
mean+3SD	0.88	1.40	2.62	2.89	5.89		mean+3SD	0.73	1.09	1.98	2.25	4.33	
mean-3SD	0.65	1.13	2.04	2.48	4.93		mean-3SD	0.33	0.64	1.22	1.50	3.12	
N	14	14	14	14	14		N	9	9	9	9	9	
kit median	0.76	1.27	2.33	2.68	5.42		kit median	0.53	0.87	1.57	1.87	3.72	
mean/target	1.57	1.53	1.53	1.48	1.55	1.53	mean/target	1.07	1.05	1.05	1.04	1.06	1.05
Sample Analyte	TM196 free PSA	TM197	TM198	TM199	TM200		Sample Analyte	TM196 free PSA	TM197	TM198	TM199	TM200	
Method	DUD	DA1	Siemens Dimension				Method	DPD	DP5	Siemens Immulite 2000			
mean	0.61	1.02	1.87	2.16	4.45		mean	0.49	0.85	1.58	1.83	3.66	
SD	0.03	0.02	0.06	0.06	0.15		SD	0.02	0.05	0.05	0.11	0.22	
%CV	5.4%	1.6%	3.4%	2.6%	3.4%		%CV	3.4%	5.4%	3.4%	6.1%	6.0%	
mean+3SD	0.71	1.06	2.06	2.33	4.90		mean+3SD	0.54	0.98	1.74	2.16	4.33	
mean-3SD	0.51	0.97	1.67	1.99	4.00		mean-3SD	0.44	0.71	1.41	1.49	3.00	
N	8	8	8	8	8		N	16	15	16	16	16	
kit median	0.61	1.02	1.86	2.16	4.44		kit median	0.50	0.83	1.60	1.86	3.66	
mean/target	1.25	1.22	1.23	1.19	1.27	1.23	mean/target	1.00	1.02	1.04	1.01	1.05	1.02

New York State Proficiency Test May 2009

Summary of Results

Sample	Average					Sample	Average					Average bias
	TM196	TM197	TM198	TM199	TM200		bias	TM196	TM197	TM198	TM199	
free PSA												
* IS target	0.49	0.83	1.52	1.81	3.50	free PSA kit average:						
SD (+/-)	0.01	0.04	0.06	0.03	0.07	mean	0.60	1.00	1.85	2.17	4.35	
% CV	2.7%	4.6%	3.7%	1.5%	2.1%	SD	0.12	0.19	0.33	0.38	0.77	
high (30%)	0.64	1.08	1.98	2.35	4.55	all kit median	0.53	0.89	1.65	1.98	4.00	
low (30%)	0.34	0.58	1.06	1.27	2.45							

* target value from a traceable free PSA standard.

Sample Analyte Method	TM196 % free PSA	TM197	TM198	TM199	TM200	Sample Analyte Method	TM196 % free PSA	TM197	TM198	TM199	TM200	Average bias
			All lab				AB1	AB1	Abbott AxSYM, Architech & Imx			
mean	8.2	13.9	24.8	30.6	54.8	mean	6.8	12.2	22.3	28.4	55.9	
SD	1.5	2.0	3.6	4.5	7.2	SD	0.6	0.3	2.4	3.6	4.4	
%CV	17.8%	14.6%	14.3%	14.6%	13.2%	%CV	8.4%	2.6%	10.8%	12.8%	7.9%	
mean+3SD	12.5	19.9	35.4	44.0	76.5	mean+3SD	8.5	13.1	29.6	39.3	69.1	
mean-3SD	3.8	7.8	14.1	17.2	33.1	mean-3SD	5.1	11.2	15.1	17.5	42.7	
N	71	71	72	72	72	N	5	6	6	6	6	
mean/target	1.10	1.06	1.08	1.07	1.10	kit median	7.0	12.0	22.5	30.0	56.0	
						mean/target	0.92	0.93	0.97	0.99	1.12	0.99

Sample Analyte Method	TM196 % free PSA	TM197	TM198	TM199	TM200	Sample Analyte Method	TM196 % free PSA	TM197	TM198	TM199	TM200	Average bias
			Beckman Unicel & Access/2 Hybritech calib.				DA1	DA1	Siemens Dimension			
mean	9.6	16.0	28.6	35.2	62.4	mean	6.6	11.7	21.3	26.3	49.2	
SD	0.6	0.8	1.7	2.2	3.9	SD	0.4	0.3	0.5	0.7	1.9	
%CV	6.1%	5.0%	5.8%	6.2%	6.2%	%CV	6.3%	3.0%	2.5%	2.8%	3.9%	
mean+3SD	11.3	18.4	33.6	41.8	74.0	mean+3SD	7.9	12.7	22.9	28.5	55.0	
mean-3SD	7.8	13.6	23.6	28.6	50.7	mean-3SD	5.4	10.6	19.7	24.1	43.5	
N	27	27	27	27	27	N	7	7	7	7	7	
kit median	9.4	16.0	28.0	35.0	62.0	kit median	6.7	11.7	21.0	26.4	49.3	
mean/target	1.30	1.22	1.24	1.23	1.25	mean/target	0.89	0.89	0.93	0.92	0.99	0.92

Sample Analyte Method	TM196 % free PSA	TM197	TM198	TM199	TM200	Sample Analyte Method	TM196 % free PSA	TM197	TM198	TM199	TM200	Average bias
			Roche Elecsys/Cobas e411 & E170/e601				DP5	DP5	Siemens Immulite 2000			
mean	8.0	13.2	23.6	28.9	50.5	mean	6.5	11.5	20.6	25.3	45.5	
SD	1.0	1.2	1.6	1.7	2.8	SD	0.9	1.2	1.8	3.2	2.8	
%CV	12.5%	8.8%	6.8%	5.8%	5.5%	%CV	14.4%	10.2%	8.8%	12.6%	6.3%	
mean+3SD	11.0	16.7	28.3	33.9	58.7	mean+3SD	9.3	15.0	26.1	34.9	54.1	
mean-3SD	5.0	9.7	18.8	23.9	42.2	mean-3SD	3.7	8.0	15.2	15.7	37.0	
N	20	20	20	20	20	N	9	8	9	9	9	
kit median	8.0	13.0	23.8	29.0	50.0	kit median	6.8	11.6	21.0	25.7	45.0	
mean/target	1.08	1.01	1.02	1.01	1.01	mean/target	0.88	0.88	0.90	0.89	0.91	0.89

Sample % free PSA IS target	TM196	TM197	TM198	TM199	TM200	Sample % free PSA kit average:	TM196	TM197	TM198	TM199	TM200
	7.4%	13.1%	23.0%	28.6%	49.9%	mean	7.5	12.9	23.3	28.8	52.7
						SD	1.3	1.8	3.2	3.9	6.6
						all kit median	6.8	12.2	22.3	28.4	50.5

New York State Proficiency Test May 2009
Summary of Results

Sample Analyte Method	TM196	TM197	TM198	TM199	TM200	Average bias	Sample Analyte Method	TM196	TM197	TM198	TM199	TM200	Average bias
	complexed PSA					All lab		% complexed PSA					All lab
mean	6.6	6.1	5.2	4.7	3.4			mean	91.5%	86.3%	71.5%	68.1%	
SD	0.3	0.3	0.3	0.2	0.2		SD	6.8%	4.9%	5.7%	2.8%	1.9%	
%CV	4.6%	5.6%	6.5%	5.2%	4.7%		%CV	7.4%	5.7%	8.0%	4.2%	4.3%	
mean+3SD	7.5	7.1	6.2	5.4	3.9		mean+3SD	112.0%	101.1%	88.6%	76.6%	49.9%	
mean-3SD	5.7	5.1	4.2	3.9	2.9		mean-3SD	71.1%	71.4%	54.4%	59.6%	38.4%	
N	11	11	11	11	11		N	10	10	10	10	10	
all median	6.8	6.1	5.3	4.8	3.4		all median	92.6%	87.9%	73.7%	67.7%	44.1%	