

WORLD RABIES DAY

SEPTEMBER 28

2012 RABIES ANNUAL SUMMARY

Wadsworth Center Rabies Laboratory

New York State Department of Health

Robert J. Rudd

There were 425 animals diagnosed with rabies at the Wadsworth Center laboratory in 2012, representing 6.30% of all animals tested. The 425 rabid animals includes 186 raccoons (35.6 % positivity rate); 53 skunks (25.7%); 114 bats (3.2%); 22 cats (2.0%); 21 gray fox (55.2%); 7 woodchucks (10.1%); 7 red fox (10.6%); 5 bovine (7.8%); 5 deer (4.5%); 1 goat (3.2%); 1 beaver (50%); 1 otter (7.6%); 1 horse (2.8%) and 1 mink (20%). The number of cats diagnosed with rabies in 2012 receded closer to the previous 10 year average of 1.7%. We are hopeful that the 3.1% and 3.2% positivity rates seen in cats during 2011 and 2010 were an anomaly.

The Wadsworth Center's rabies laboratory tested 6,654 animals in 2012. This number is 224 more than tested in 2011 and is 1,531 less than the average number of specimens submitted during the previous 10 year period. During 2012, 49 counties submitted positive terrestrial animals and 41 counties submitted positive bats. In 2011 terrestrial and bat rabies were reported in 40 and 29 counties respectfully. It is important to note that both terrestrial and bat rabies continues to exist throughout New York State. Bat rabies is endemic in all counties and terrestrial rabies continues to be endemic in all counties with the exception of Franklin, Nassau and Suffolk counties. Terrestrial rabies presses towards the borders of Franklin and Nassau counties; Suffolk county enjoys the buffer distance of Nassau Co.

The specimens tested included 4,719 wild animals (70.8% of total submissions and 93.2 % of positives) and 1,941 domestic animals (29.1% of total specimens and 6.8% of positives), with 50 species of animals represented. These included 3,545 bats (53.3% of all animals tested), 1,107 cats (16.6%), 660 dogs (9.9 %), 522 raccoons (7.8%), 206 skunks (3.1%), 136 rodents and lagomorphs (2.0%), 112 deer (1.7%), 105 fox (1.6%), 96 other wild (1.4%) 64 cattle (0.96%), 41 equine (0.6%), and 60 other domestic(.90%).

Rabies virus infection was present in 3.2% of all bats submitted in 2012. There were 3,299 big brown bats examined and 106 of those were rabid, resulting in a 3.2% positivity rate for that species. Rabies was detected in 3 of 150 little brown bats examined (2.0% positivity), 0 of 24 silver-haired bats, 3 of 31 red bats (9.7 %), and 2 of 4 Hoary bats (50%). Of the 114 rabid bats tested in 2012, 53 (46.5%) had contacts with humans. However, of all of the 3,204 bats tested 2,144 had contact with humans and were found to be negative for rabies. This testing prevented unnecessary post exposure prophylaxis and conserved the costly and limited supply of rabies vaccine and immune globulin.

Of concern over the past six years is the disease affecting bats known as White Nose Syndrome. This disease predominantly affects bats of the genus *Myotis* (little brown bats). From 1999 – 2008, the rabies lab tested an average of 952 little brown bats per year. In 2009 that number dropped to 483, and in 2010 the rabies lab tested 245 little brown bats. The laboratory tested 174 *Myotis* in 2011 and 167 *Myotis* in 2012. This drop in *Myotis* submissions for rabies testing is evidence of the steep decline in the number of these bats found in New York State. However, the continued submission of these *Myotis*, which have potentially exposed humans to rabies, is good news of the continued presence of *Myotis* from areas that have endured over a 90% reduction in little brown bat numbers.

During 2012 the rabies diagnostic laboratory at the New York City Department of Health and Mental Hygiene examined 386 specimens, including 194 raccoons, 77 cats, 26 dogs, 35 opossum, 37 bats, 11 skunks, 2 groundhogs, 1 horse, 1 muskrat, 1 squirrel, and 1 undisclosed species. Among these animals 13 (3.4%) were positive for rabies, including 9 raccoons, 3 bats, and 1 opossum.

The Wadsworth Center rabies laboratory tested 1,086 human sera for rabies virus neutralizing antibody. The laboratory also examined 1,633 raccoon sera for rabies antibody in support of wildlife oral rabies vaccination programs.

Rabies virus-variant typing was performed on 200 isolates using a panel of monoclonal antibodies or PCR, to aid in the study of rabies epizootiology in the State.

For more information visit the rabies laboratory website at:

www.wadsworth.org/rabies

New York City Public Health Laboratory data provided by Dr. Jie Fu and Brooke Bregman.

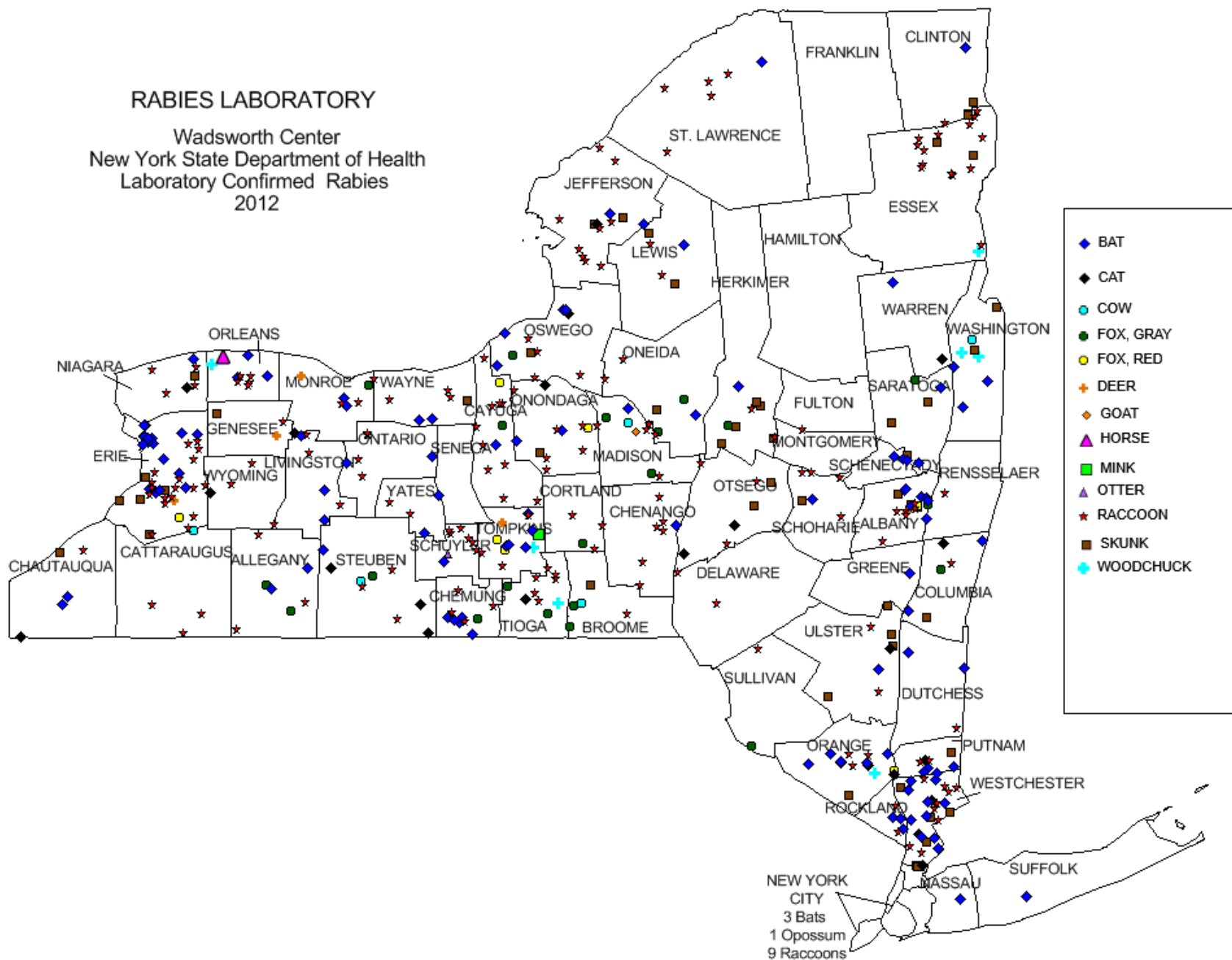
Report of N.Y. State Dept. of Health Rabies Laboratory
01/01/2012 to 12/31/2012

Number examined ... Number positive

COUNTY	Dogs	Cats	Cattle	Other Domestic	Skunk	Fox	Bats	Raccoons	Rodents Lagomorphs	Other Wild	Total Rcvd	Total Positive
Albany	26 0	24 0	0 0	7 0	8 4	3 1	166 7	11 6	1 0	6 1	252	19
Allegany	0 0	9 0	1 0	3 0	0 0	2 2	29 2	5 3	0 0	9 0	58	7
Bronx	1 0	2 0	0 0	0 0	0 0	0 0	0 0	0 0	2 0	0 0	5	0
Broome	11 0	22 0	2 1	1 0	1 1	4 2	65 0	4 1	1 0	6 0	117	5
Cattaraugus	5 0	15 0	3 1	2 0	0 0	2 0	105 0	5 3	1 0	7 0	145	4
Cayuga	9 0	18 0	2 0	2 0	3 0	3 2	64 1	15 10	1 0	6 0	123	13
Chautauqua	2 0	16 1	2 0	0 0	1 1	0 0	53 2	8 1	1 0	8 0	91	5
Chester	6 0	7 0	2 0	0 0	0 0	1 1	64 6	6 4	2 0	1 0	89	11
Chester	4 0	9 0	0 0	2 0	1 0	2 0	27 1	8 7	1 0	3 0	57	8
Clinton	8 0	11 0	1 0	1 0	63 4	4 0	20 1	20 2	4 0	3 0	135	7
Columbia	4 0	15 1	0 0	0 0	3 1	3 1	42 2	3 1	1 0	6 0	77	6
Cortland	6 0	10 0	1 0	2 0	0 0	2 1	26 0	2 2	0 0	0 0	49	3
Delaware	2 0	6 0	1 0	2 0	1 0	0 0	17 0	3 2	0 0	4 0	36	2
Dutchess	12 0	23 0	0 0	2 0	3 0	2 0	54 2	3 1	1 0	1 0	101	3
Erie	105 0	126 0	1 0	0 0	29 5	9 1	676 18	84 17	19 0	10 1	1103	42
Essex	2 0	6 0	1 0	4 0	3 2	1 0	17 0	20 16	3 1	5 0	62	19
Franklin	4 0	5 0	0 0	0 0	3 0	3 0	12 0	9 0	2 0	7 0	45	0
Fulton	2 0	7 0	0 0	0 0	1 0	1 0	12 0	1 1	0 0	1 0	25	1
Genesee	2 0	5 0	3 0	0 0	2 1	0 0	27 0	2 1	0 0	2 1	43	3
Greene	4 0	8 0	0 0	3 0	0 0	0 0	9 1	3 0	1 0	1 0	29	1
Hamilton	0 0	0 0	0 0	0 0	0 0	0 0	2 0	0 0	0 0	1 0	3	0
Herkimer	1 0	5 0	1 0	3 0	6 5	2 1	30 1	5 2	1 0	3 0	57	9
Jefferson	13 0	10 1	1 0	0 0	2 2	1 0	77 2	10 9	3 0	4 0	121	14
Kings	0 0	1 0	0 0	0 0	0 0	0 0	0 0	0 0	0 0	0 0	1	0
Lewis	7 0	7 0	2 0	0 0	3 2	1 0	39 1	6 2	1 0	3 0	69	5
Livingston	2 0	6 1	1 0	2 0	0 0	0 0	17 3	6 4	0 0	3 0	37	8
Madison	4 0	12 0	1 1	2 1	2 0	2 2	27 1	6 3	0 0	1 0	57	8
Monroe	16 0	35 0	0 0	0 0	2 0	1 1	101 2	4 2	0 0	6 1	165	6
Montgomery	2 0	8 0	1 0	0 0	0 0	0 0	11 0	0 0	1 0	1 0	24	0
Nassau	40 0	57 0	0 0	0 0	0 0	2 0	11 1	42 0	1 0	5 0	158	1
New York	1 0	4 0	0 0	0 0	0 0	0 0	1 0	1 0	0 0	0 0	7	0
Niagara	22 0	32 1	1 0	1 0	3 1	1 0	57 1	17 4	1 0	2 0	137	7
Oneida	18 0	18 0	4 0	1 0	1 1	4 2	88 1	3 3	3 0	2 0	142	7
Onondaga	55 0	71 1	0 0	0 0	8 1	4 1	226 2	12 7	6 0	4 0	386	12
Ontario	7 0	33 0	1 0	2 0	0 0	1 0	77 2	8 4	1 0	2 0	132	6
Orange	32 0	48 2	1 0	2 0	3 1	1 1	54 6	8 3	4 1	5 0	158	14
Orleans	1 0	16 0	0 0	1 1	0 0	1 0	39 3	8 5	2 1	2 0	70	10
Oswego	6 0	12 1	2 0	1 0	4 1	2 1	87 4	10 4	1 0	4 0	129	11
Otsego	1 0	9 2	0 0	3 0	3 2	1 0	44 0	3 3	0 0	4 0	68	7
Out-Of-State	2 0	3 0	1 0	3 0	0 0	1 0	1 0	0 0	1 1	0 0	12	1
Putnam	7 0	16 1	0 0	0 0	2 1	0 0	78 3	2 2	0 0	2 0	107	7
Queens	3 0	0 0	1 0	0 0	0 0	0 0	0 0	0 0	2 0	1 0	7	0
Rensselaer	23 0	17 0	2 0	0 0	0 0	4 1	17 0	1 1	4 0	5 0	73	2
Richmond	0 0	0 0	0 0	1 0	0 0	0 0	0 0	0 0	0 0	1 0	2	0
Rockland	5 0	16 0	0 0	0 0	2 0	0 0	31 3	2 2	2 0	1 0	59	5
Saratoga	10 0	35 0	1 0	3 0	6 3	8 1	67 2	5 0	7 0	4 0	146	6
Schenectady	21 0	23 0	0 0	1 0	3 0	1 0	45 3	0 0	4 0	0 0	98	3
Schoharie	4 0	9 0	3 0	0 0	1 1	0 0	5 1	7 4	0 0	5 0	34	6
Schoharie	5 0	3 0	2 0	0 0	1 0	1 0	8 1	9 6	0 0	5 1	34	8
Seneca	1 0	8 0	2 0	0 0	0 0	0 0	12 0	1 0	1 0	0 0	25	0
St. Lawrence	7 0	14 0	3 0	4 0	2 0	4 0	74 1	31 5	0 0	5 0	144	6
Stauben	13 0	21 3	3 1	1 0	0 0	2 1	27 1	4 3	1 0	5 0	77	9
Suffolk	15 0	37 0	0 0	1 0	0 0	3 0	48 1	18 0	6 0	6 0	134	1
Sullivan	9 0	17 0	0 0	0 0	0 0	1 1	5 0	1 1	3 0	2 0	38	2
Tioga	6 0	6 1	3 0	6 0	1 0	2 2	29 0	8 6	4 1	4 0	69	10
Tompkins	15 0	16 0	0 0	5 0	4 0	3 2	110 5	10 3	8 1	14 2	185	13
Ulster	10 0	24 1	0 0	2 0	6 4	3 0	49 1	4 2	2 0	9 0	109	8
Warren	5 0	9 1	0 0	0 0	0 0	1 0	26 1	4 0	0 0	2 0	47	2
Washington	9 0	15 0	5 1	3 0	2 2	2 0	40 3	1 0	3 2	1 0	81	8
Wayne	6 0	6 0	0 0	3 0	2 1	2 0	29 2	6 4	1 0	4 0	59	7
Westchester	34 0	71 3	0 0	6 0	14 6	0 0	345 11	33 9	16 0	5 0	524	29
Wyoming	3 0	8 1	2 0	0 0	0 0	1 0	13 0	10 3	1 0	4 0	42	4
Yates	4 0	5 0	0 0	2 0	1 0	0 0	12 2	4 2	0 0	1 0	29	4
Total	660 0	1107 22	64 5	90 2	206 53	105 28	3544 114	522 186	132 8	224 7	6,654	425

Any unlisted county had no specimens processed during the reporting period.

RABIES LABORATORY
 Wadsworth Center
 New York State Department of Health
 Laboratory Confirmed Rabies
 2012



LABORATORY CONFIRMED RABIES
RABIES LABORATORY , WADSWORTH CENTER
10 – YEAR PERIOD

	2003	2004	2005	2006	2007	2008	2009	2010	2011	2012
BAT	90	118	81	127	104	112	79	68	64	114
BEAR	1	-	-	-	-	-	-	-	-	-
BEAVER	-	-	1	-	-	-	-	-	-	1
BOBCAT	2	-	-	-	-	-	1	-	-	-
CAMEL	-	-	-	-	-	-	-	-	-	-
CAT	27	19	21	25	17	24	27	43	38	22
CATTLE	3	2	9	6	-	6	3	6	7	5
COYOTE	1	1	1	-	-	1	-	2	-	-
DEER	2	3	2	-	2	2	-	2	1	5
DOG	1	1	1	1	1	1	-	1	1	-
FISHER	-	-	-	-	1	-	2	-	0	-
FOX	-	-	-	-	-	1	-	-	0	-
FOX, GRAY	16	25	21	25	17	12	14	31	21	21
FOX, RED	3	5	3	6	8	7	10	3	5	7
GOAT	2	-	-	-	-	-	1	-	1	1
GUINEAPIG	1	-	-	-	-	-	-	-	-	-
HORSE	1	-	2	2	2	1	1	2	-	1
MINK										1
MULE	-	-	1	-	-	-	-	-	-	-
OPOSSUM	-	-	-	-	-	-	-	1	-	-
OTTER	1	1	-	1	-	-	-	-	1	1
RABBIT	-	-	-	-	-	1	-	-	-	-
RACCOON	198	264	357	320	282	263	226	250	162	186
SHEEP	-	-	-	-	-	-	1	1	-	-
SKUNK	76	104	89	95	75	63	72	85	62	53
WOODCHUCK	4	5	3	4	6	4	3	5	7	7
TOTAL	429	548	592	612	515	498	440	499	370	425

OPERATIONS DATA

RABIES LABORATORY, WADSWORTH CENTER

15 YEAR HISTORY

	1998	1999	2000	2001	2002	2003	2004	2005	2006	2007	2008	2009	2010	2011	2012
Specimens Received															
Animal carcass	9866	9423	10040	8973	8481	8236	8459	8318	8928	9730	9345	7275	6642	6430	6657
Human Sera	2003	2303	2125	2369	1997	2105	2258	2179	2000	2167	1529	1272	1042	964	1086
Animal Sera - serum neutralization	176	932	963	1188	971	852	2108	2806	1290	1389	3003	1503	1815	753	1080
Animal - variant typing															311
Specimens Tested															
Direct Fluorescent Antibody	17420	17990	18605	15055	14500	15100	18200	17500	17225	16450	15525	11449	10398	8962	6657
Neutralization for rabies antibody	2979	4075	3588	3825	3640	3710	5112	5369	3931	3756	1881	1775	1437	1896	2166
Cell culture virus isolation	280	269	258	315	250	169	177	152	151	128	116	110	104	104	110
Monoclonal antibody typing	171	221	198	75	170	166	160	17	138	132	88	92	82	83	200
PCR identification of Rabies															1500
Workload/Test performed															
Direct Fluorescent Antibody															24,429
DFA Positive screening procedure															735
NonSpecific Staining Procedure	previously not counted														75
Neutralization for rabies antibody															
Monoclonal Antibody tests															400
Cell Culture virus isolation															150
PCR tests	previously not performed														9,576

RABIES LABORATORY WADSWORTH CENTER

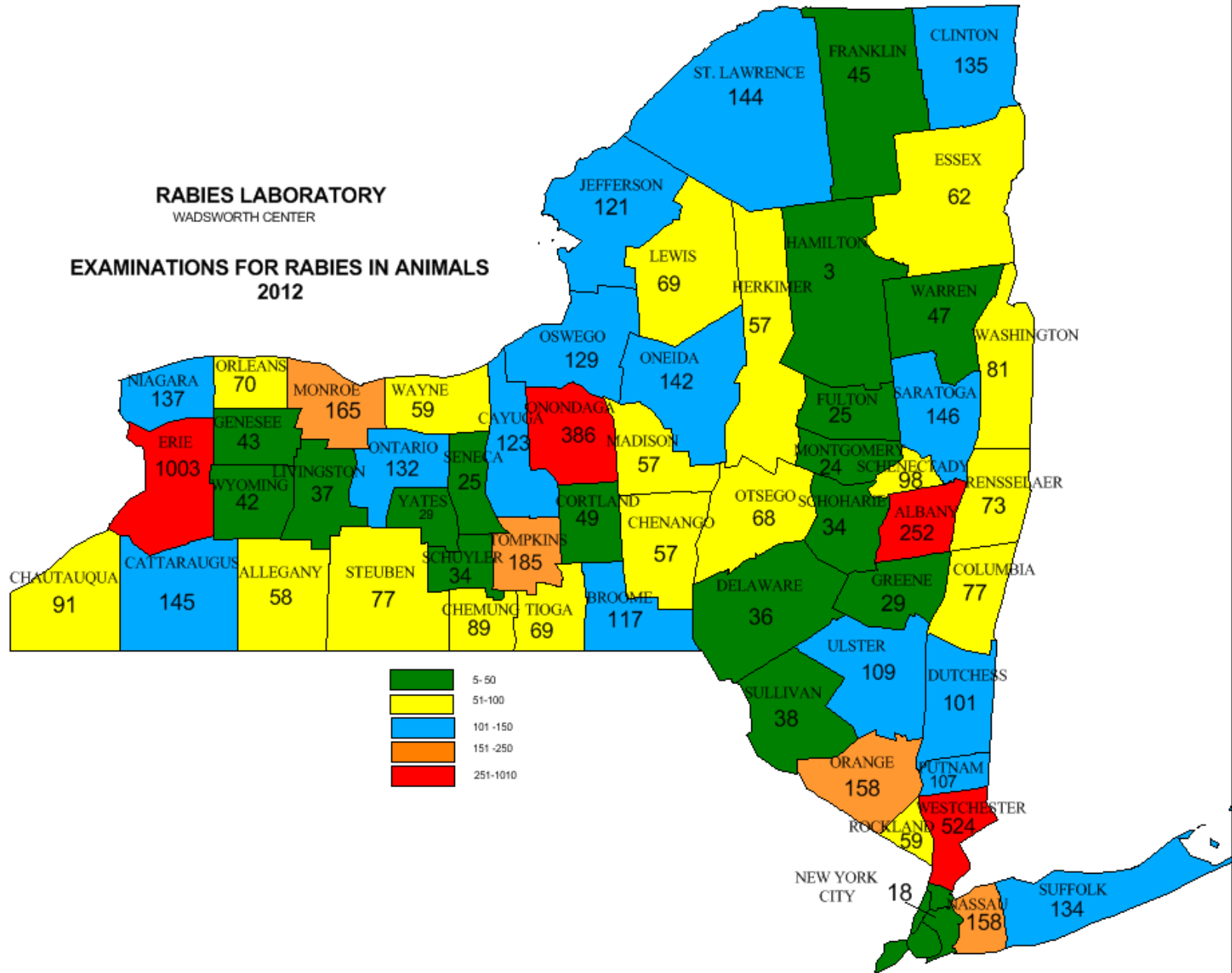
EXAMINATIONS FOR RABIES IN ANIMALS, 2012

Total Processed: 6654

Albany	252	Oneida	142
Allegany	58	Onondaga	386
Broome	117	Ontario	132
Cattaraugus	145	Orange	158
Cayuga	123	Orleans	70
Chautauqua	91	Oswego	129
Chemung	89	Otsego	68
Chenango	57	Out-Of-State	12
Clinton	135	Putnam	107
Columbia	77	Rensselaer	73
Cortland	49	Rockland	59
Delaware	36	Saratoga	146
Dutchess	101	Schenectady	98
Erie	1003	Schoharie	34
Essex	62	Schuyler	34
Franklin	45	Seneca	25
Fulton	25	St. Lawrence	144
Genesee	43	Steuben	77
Greene	29	Suffolk	134
Hamilton	3	Sullivan	38
Herkimer	57	Tioga	69
Jefferson	121	Tompkins	185
Lewis	69	Ulster	109
Livingston	37	Warren	47
Madison	57	Washington	81
Monroe	165	Wayne	59
Montgomery	24	Westchester	524
Nassau	158	Wyoming	42
New York	18	Yates	29
Niagara	137		

RABIES LABORATORY
WADSWORTH CENTER

EXAMINATIONS FOR RABIES IN ANIMALS
2012



RABIES LABORATORY
WADSWORTH CENTER

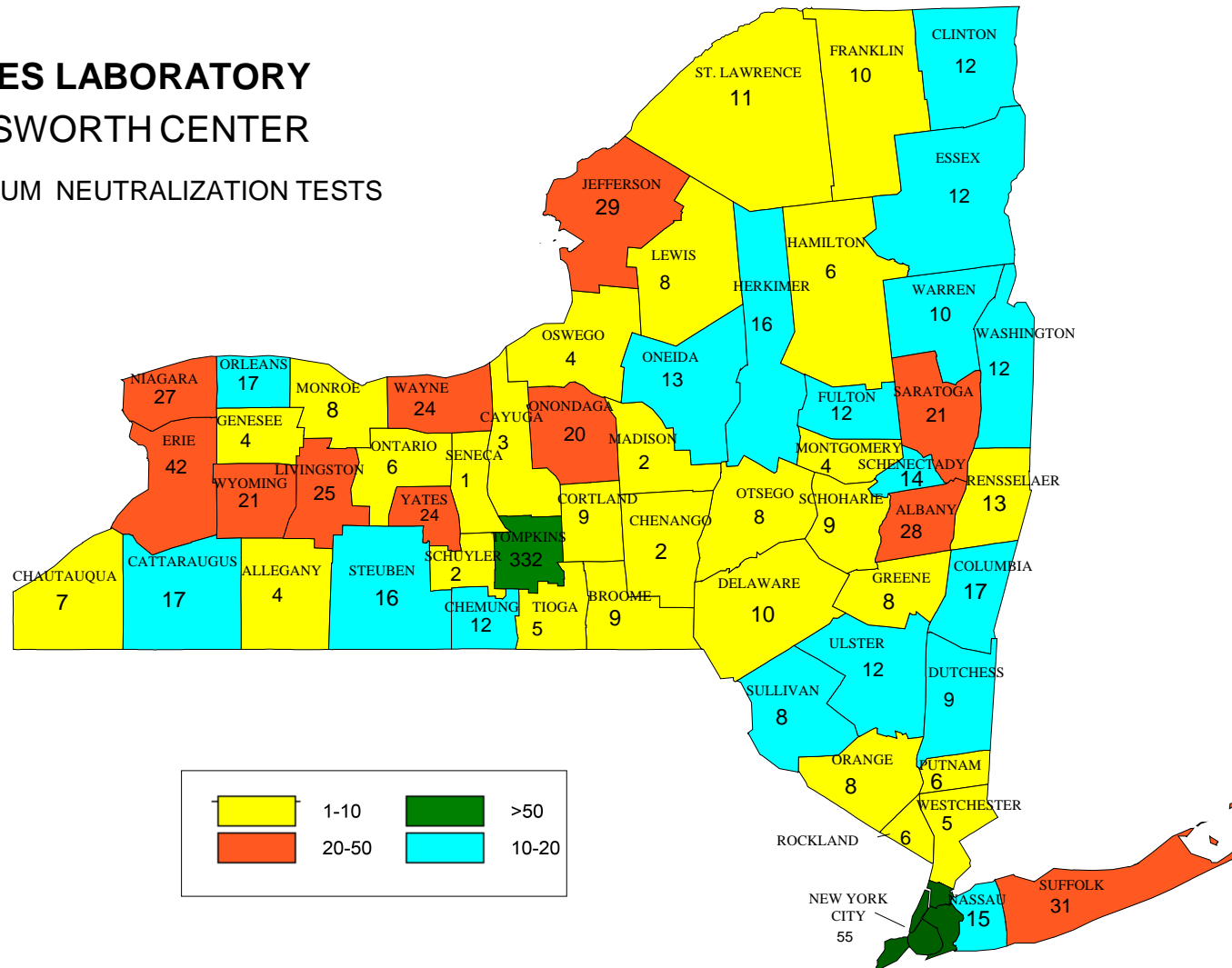
SERUM NEUTRALIZATION TESTS
FOR HUMAN RABIES ANTIBODY, 2012

TOTAL = 1096

Albany	28	Oneida	13
Allegany	4	Onondaga	20
Bronx	17	Ontario	6
Broome	9	Orange	8
Cattaraugus	17	Orleans	17
Cayuga	3	Oswego	4
Chautauqua	7	Otsego	8
Chemung	12	Out-Of-State	12
Chenango	2	Putnam	6
Clinton	12	Queens	13
Columbia	17	Rensselaer	13
Cortland	9	Richmond	4
Delaware	10	Rockland	6
Dutchess	9	Saratoga	21
Erie	42	Schenectady	14
Essex	12	Schoharie	9
Franklin	10	Schuyler	2
Fulton	12	Seneca	1
Genesee	4	St. Lawrence	11
Greene	8	Steuben	16
Hamilton	6	Suffolk	31
Herkimer	16	Sullivan	8
Jefferson	29	Tioga	5
Kings	9	Tompkins	332
Lewis	8	Ulster	12
Livingston	25	Unknown	2
Madison	2	Warren	10
Monroe	8	Washington	12
Montgomery	4	Wayne	24
Nassau	15	Westchester	5
New York	13	Wyoming	21
Niagara	27	Yates	24

RABIES LABORATORY WADSWORTH CENTER

2012 HUMAN SERUM NEUTRALIZATION TESTS



TOTAL SPECIMENS PROCESSED 2012**BY SPECIES**

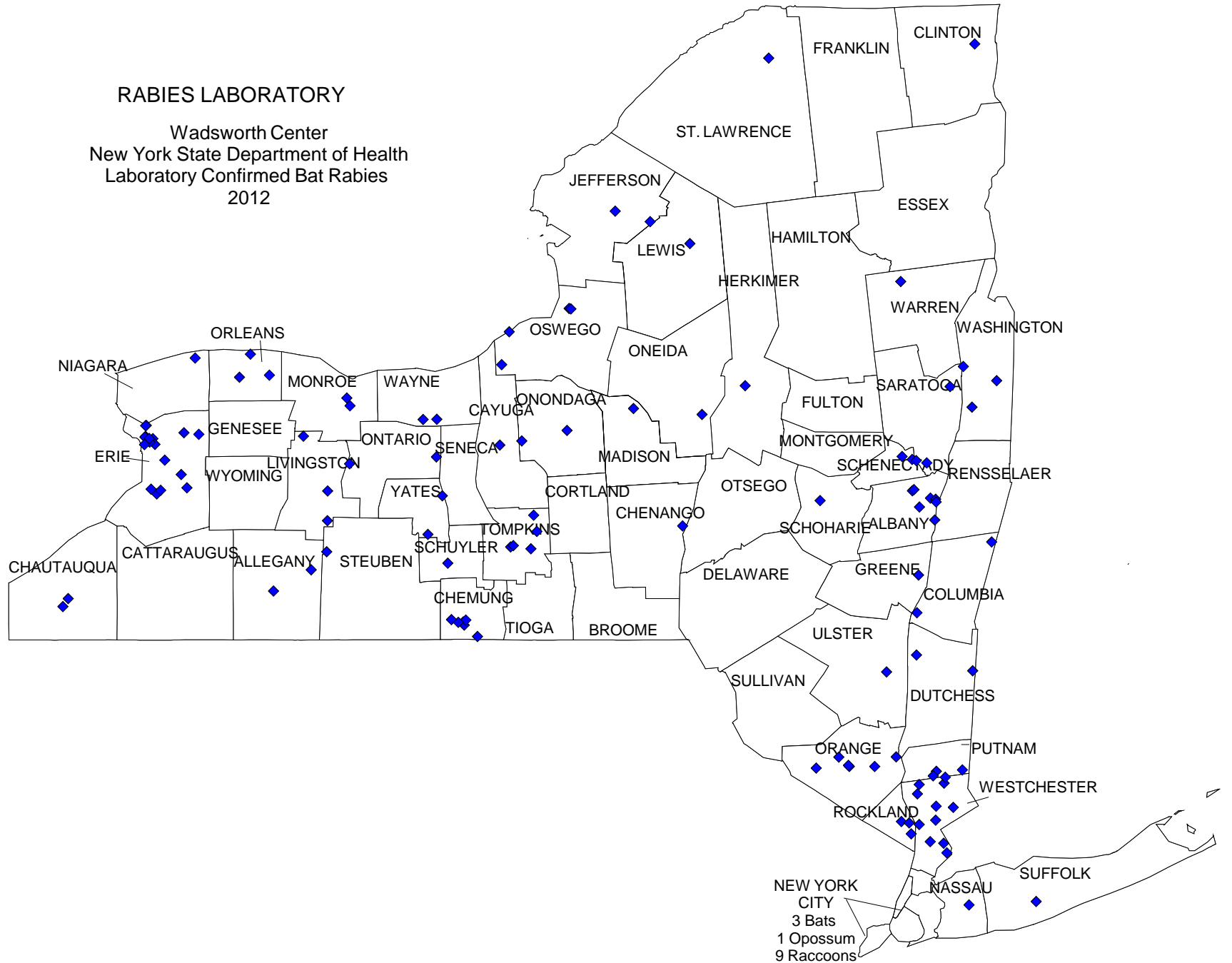
	Total Submitted	Total Positive
ALPACA	4	0
BAT	3544	114
BEAR	8	0
BEAVER	2	1
BOBCAT	9	0
CAT	1107	22
CATTLE	64	5
CHIPMUNK	3	0
COATIMUNDI	1	0
COYOTE	11	0
DEER	108	5
DOG	660	0
DONKEY	5	0
ELK	1	0
FERRET	7	0
FISHER	16	0
FOX	105	28
GOAT	34	1
HORSE	39	1
KANGAROO	1	0
LLAMA	3	0
MINK	5	1
MOOSE	5	0
MOUSE	2	0
MUSKRAT	6	0
OPPOSSUM	23	0
OTTER	13	1
PIG	3	0
PORCUPINE	4	0
RABBIT	2	0
RABBIT,Domestic	9	0
RABBIT,Wild	1	0
RACCOON	522	186
RAT	1	0
RAT,Wild	1	0
REINDEER	3	0
SHEEP	9	0
SKUNK	206	53
SQUIRREL	10	0
SQUIRREL,Flying	5	0
SQUIRREL,Gray	17	0
SQUIRREL,Red	4	0
WEASEL	4	0
WOODCHUCK	69	8
Total	6657	425

RACCON -HUMAN INTERACTIONS
WADSWORTH CENTER RABIES LABORATORY
2003 -2012

Raccoon Submissions										
	2012	2011	2010	2009	2008	2007	2006	2005	2004	2003
Total	522	876	954	1063	1720	1820	1349	1127	1321	562
Positive	186	162	250	226	263	282	320	334	253	195
Negative	322	689	677	794	1408	1476	977	737	1009	343
Unsatisfactory	14	25	27	43	49	62	52	56	59	24
Contact with Humans										
Total	182	282	194	245	197	276	239	206	236	142
Positive	48	48	58	47	47	70	61	50	62	37
Negative	129	213	132	194	149	204	171	156	157	99
Unsatisfactory	5	21	4	4	1	2	7	0	17	6
Contact with Cats										
Total	21	17	11	38	46	42	30	42	44	28
Positive	7	10	4	19	22	20	13	22	19	18
Negative	14	7	5	17	21	21	17	18	23	9
Unsatisfactory	0	0	2	2	3	1	0	2	2	1
Contact with Dogs										
Total	208	170	190	237	227	295	293	292	276	200
Positive	105	76	112	112	120	140	169	144	135	105
Negative	92	92	70	118	105	144	119	142	136	88
Unsatisfactory	11	2	8	7	2	11	5	6	5	7
Contact with other Domestic										
Total	22	21	24	17	-	-	-	-	-	-
Positive	9	15	11	10	-	-	-	-	-	-
Negative	13	4	13	5	-	-	-	-	-	-
Unsatisfactory	0	2	0	1	-	-	-	-	-	-

RABIES LABORATORY

Wadsworth Center
 New York State Department of Health
 Laboratory Confirmed Bat Rabies
 2012



Bat- Human /Animal Interactions

Wadsworth Center Rabies Laboratory

2003 through 2012

Bat Submissions										
	2012	2011	2010	2009	2008	2007	2006	2005	2004	2003
<u>Total</u>	3544	2791	2886	3298	4358	4345	4145	3856	3595	4015
<u>Positive</u>	114	64	69	79	112	104	127	80	115	90
<u>Negative</u>	3202	2521	2601	3035	3982	3863	3713	3465	3306	3598
<u>Unsatisfactory</u>	228	206	196	184	264	378	305	311	174	327
<u>Contact with Humans</u>										
<u>Total</u>	2318	1762	1883	1925	1920	561	607	611	529	619
<u>Positive</u>	56	43	39	41	43	20	28	21	22	16
<u>Negative</u>	2121	1603	1726	1795	1768	502	513	548	478	550
<u>Unsatisfactory</u>	141	116	119	89	109	39	66	42	29	53
<u>Contact with Cats</u>										
<u>Total</u>	608	506	359	726	919	813	898	895	892	797
<u>Positive</u>	20	11	7	14	26	10	25	17	15	14
<u>Negative</u>	548	450	341	666	839	756	824	816	837	735
<u>Unsatisfactory</u>	40	45	11	46	54	47	49	62	40	48
<u>Contact with Dogs</u>										
<u>Total</u>	451	201	169	339	417	324	285	234	241	289
<u>Positive</u>	22	10	4	14	14	20	23	6	17	9
<u>Negative</u>	40	177	149	303	364	281	250	209	211	264
<u>Unsatisfactory</u>	28	14	16	22	39	23	12	19	13	16

RABIES LABORATORY
WADSWORTH CENTER
Totals, All Animals Tested, 1993- 2012

Alpaca-	-	-	-	-	-	-	-	-	-	-	-	-	-	-	-	9	5	6	6	4
Bat	50	78	100	118	99	58	69	97	43	65	52	32	50	49	125	176	39	16	10	20
Bat, Big Brown	829	573	710	1461	1510	1947	2352	3126	2743	2703	2993	2510	2819	2919	2958	3158	2685	2537	2573	3299
Bat, Hoary	3	3	2	7	8	11	6	3	6	10	5	1	6	43	159	6	9	5	6	4
Bat, N. Long E.	43	134	20	50	47	73	71	79	35	50	44	57	55	43	46	64	37	29	15	-
Bat, Pipistrelle	1	1	-	3	6	10	12	20	34	43	47	6	5	1	5	8	4	6	-	17
Bat, Red	15	9	21	14	7	61	35	47	36	38	25	13	24	50	61	15	27	16	11	31
Bat, Silverhair-	5	-	15	21	12	5	10	12	6	12	17	9	14	54	103	13	14	12	17	24
Bat, Small Bro	350	213	257	646	649	941	940	1180	1023	906	832	967	883	986	888	917	483	245	159	150
Bat, Small Foo	-	-	-	-	-	-	-	-	-	-	-	-	-	-	-	1	-	-	-	-
Bear	7	1	4	5	7	7	15	16	6	10	16	6	12	17	19	12	7	8	2	8
Beaver	16	13	9	8	9	3	7	7	11	3	1	4	2	6	5	6	4	2	1	2
Bobcat	1	3	3	1	4	1	6	3	4	-	5	2	4	3	4	1	2	-	2	9
Cat	2950	2619	2284	2253	2415	2125	1967	1973	1857	1675	1669	1560	1440	1502	1662	1478	1397	1331	1250	1107
Cattle	255	212	132	178	190	159	152	103	114	109	86	91	97	73	62	80	70	70	64	64
Chipmunk	37	44	47	35	34	31	29	25	21	16	14	21	7	6	14	9	9	6	5	3
Coydog	-	2	-	-	-	-	-	-	-	-	-	-	-	-	-	-	-	-	-	-
Coyote	30	24	28	23	29	24	23	24	17	14	23	21	15	18	12	12	12	9	7	11
Deer	295	111	74	57	62	61	50	59	38	82	103	87	124	108	126	103	61	41	48	111
Dog	1067	1031	960	915	878	855	817	830	717	767	827	759	706	695	715	708	658	651	719	660
Donkey	2	6	1	1	1	1	1	1	1	1	1	1	1	1	-	-	4	2	7	5
Elk-	-	-	-	-	-	-	-	-	-	-	-	-	-	-	-	2	1	1	-	1
Ferret	37	35	39	32	26	20	18	16	18	18	13	23	19	8	9	20	7	15	2	7
Fisher	-	1	-	2	5	1	4	-	3	2	1	5	3	9	6	-	2	2	2	16
Fox	11	16	9	5	11	4	7	4	4	1	2	3	3	3	5	2	2	3	1	1
Fox, Gray	55	27	51	51	112	107	158	106	84	80	50	68	124	112	33	41	43	91	46	38
Fox, Red	105	95	115	112	129	113	107	79	101	108	58	66	57	57	71	63	45	64	62	66
Gemsbok	-	-	-	-	-	-	-	-	-	-	-	-	-	-	-	1	-	-	-	-
Gerbil	8	12	2	4	-	-	-	2	-	1	-	-	1	-	-	-	2	2	-	-
Goat	48	36	21	40	30	47	26	74	36	25	36	33	32	36	24	31	27	32	27	34
Guinea Pig	6	4	8	3	3	4	2	5	3	5	1	-	1	2	-	-	-	1	-	-
Hamster	22	10	18	17	8	16	4	2	7	6	1	10	9	1	-	6	1	4	1	-
Horse	45	57	35	29	26	34	37	39	37	40	49	39	49	40	28	38	30	40	33	36
Llama	1	1	2	2	3	5	6	2	5	5	6	11	10	7	10	-	4	3	1	3
Mink	12	4	1	4	5	2	12	3	4	5	4	7	4	2	6	2	-	6	4	5
Mole	9	8	14	9	8	9	5	3	7	3	2	4	2	2	-	2	2	1	-	-
Monkey	-	3	1	2	1	-	1	1	1	-	-	-	-	-	2	1	1	-	-	-
Moose	-	-	-	-	-	-	-	3	2	1	2	1	3	8	3	6	3	6	-	5
Mouse	82	37	35	24	28	22	16	19	17	19	13	14	17	14	9	6	2	4	1	2
Mule-	-	-	-	-	-	-	-	-	-	-	-	-	1	1	-	-	-	-	-	-
Muskkrat	87	72	50	35	36	42	52	17	37	13	10	15	18	14	19	15	14	10	6	6
Opossum	232	119	96	125	222	168	134	125	172	71	71	89	85	132	150	140	70	49	34	23
Otter	2	-	1	4	3	1	1	-	2	-	3	2	1	1	1	1	-	1	1	13
Pig	7	5	2	4	3	6	3	7	4	2	2	2	-	4	1	3	2	4	2	3
Porcupine	11	14	15	4	6	5	15	6	5	8	5	6	4	7	4	5	6	1	2	4
Rabbit	75	64	63	52	61	44	22	35	27	24	11	19	15	9	27	3	8	3	3	2
Rabbit, Domes	33	17	24	29	35	28	30	42	25	26	26	14	17	10	7	14	13	9	2	9
Rabbit, Wild	28	13	11	11	7	11	5	9	10	7	5	6	4	5	5	3	3	3	2	1
Raccoon	3959	2109	1840	1617	1614	1701	1277	994	979	803	562	1321	1127	1349	1820	1720	1063	954	876	522
Rat	32	40	27	14	25	25	14	11	10	6	4	6	8	4	5	3	4	1	1	1
Rat, Domestic	4	1	3	1	6	5	2	7	-	3	1	4	1	3	1	5	4	1	-	-
Rat, Wild	11	3	6	3	2	7	2	5	6	12	13	3	5	3	5	2	3	4	-	1
Sheep	42	35	12	25	26	25	12	13	16	12	16	15	16	10	9	15	11	13	10	9
Shrew	3	2	5	5	3	2	2	1	2	3	1	-	1	-	1	-	-	-	-	-
Skunk	393	324	373	537	642	675	566	524	388	403	260	337	279	303	319	260	224	194	290	206
Squirrel	87	66	26	23	5	18	8	9	7	11	11	14	3	10	16	10	6	6	2	10
Squirrel, Flying	3	8	22	11	13	16	10	8	5	22	7	5	16	4	-	8	5	1	4	5
Squirrel, Gray	111	72	118	118	104	111	78	82	80	100	85	54	35	41	35	50	29	24	19	17
Squirrel, Red	11	10	16	15	9	5	9	11	5	3	2	4	2	8	4	2	2	3	-	4
Vole	11	19	22	10	17	27	18	8	22	10	4	6	3	2	1	7	6	3	4	-
Weasel	21	11	18	13	5	9	16	3	8	4	6	10	3	8	12	3	1	5	2	4
Woodchuck	325	293	248	184	232	164	175	149	137	119	90	99	93	93	107	95	83	77	78	69
Other Wild	9	11	11	5	9	11	8	15	8	15	12	9	9	6	12	2	4	6	4	2
TOTALS	11894	8731	8027	8977	9447	9862	9424	10040	8975	8481	8238	8460	8321	8929	9731	9345	7275	6642	6430	6654

Rabies Lab - NYS Dept. of Health

Positive Totals, 1993 - 2012

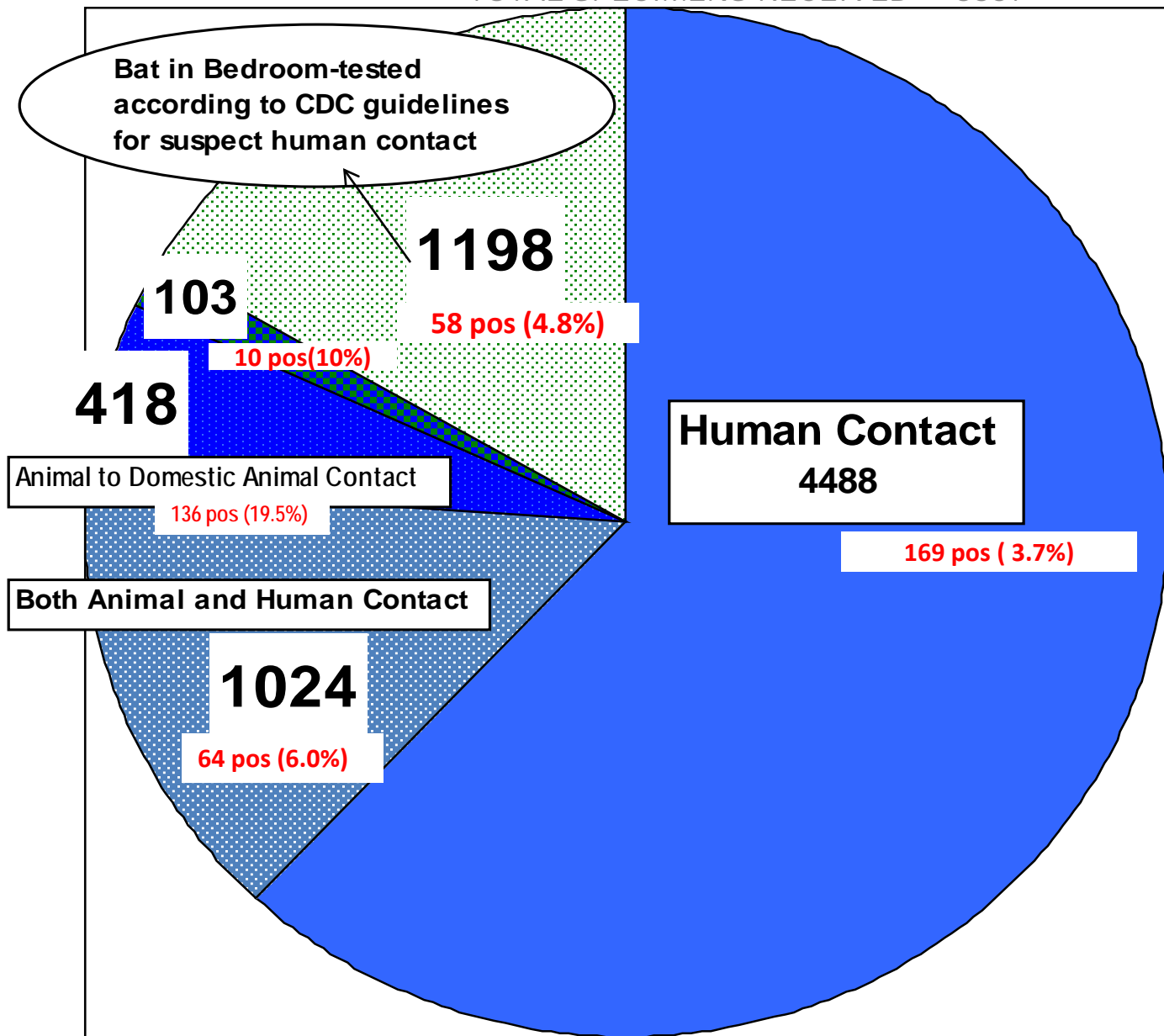
	1993	1994	1995	1996	1997	1998	1999	2000	2001	2002	2003	2004	2005	2006	2007	2008	2009	2010	2011	2012
Bat	-	-	2	1	3	9	1	3	1	3	-	-	1	-	1	1	2	-	-	-
Bat, Big Brown	48	34	39	64	70	89	101	108	95	86	84	106	67	114	90	98	64	61	58	106
Bat, Hoary	2	1	2	2	1	4	2	1	1	2	-	-	2	1	2	5	1	2	1	2
Bat, N. Long Ear	-	3	1	1	2	1	-	-	-	-	-	-	1	2	-	1	2	-	-	-
Bat, Pipistrelle	-	-	-	1	-	-	4	3	3	-	-	1	-	-	-	-	2	-	-	-
Bat, Red	1	-	1	-	1	1	-	1	1	1	1	2	3	2	3	-	1	-	1	3
Bat, Silverhair	1	-	-	1	1	1	-	-	-	-	2	-	-	-	-	1	5	2	1	-
Bat, Small Brown	3	3	3	4	2	11	9	8	8	7	3	6	6	8	8	6	5	3	3	3
Bear	-	-	-	-	-	-	1	-	-	-	1	-	-	-	-	-	-	-	-	-
Beaver	3	1	1	-	-	-	-	-	1	-	-	-	1	-	-	-	-	-	-	1
Bobcat	-	-	1	-	2	-	1	-	-	-	2	-	-	-	-	-	1	-	-	-
Cat	48	31	27	28	21	28	31	29	31	29	27	18	21	25	17	24	27	43	38	22
Cattle	18	9	9	9	15	8	9	7	6	12	3	2	9	6	-	6	3	6	7	5
Coyote	2	-	-	1	-	-	-	-	-	-	1	1	1	-	-	1	-	2	-	-
Deer	20	1	2	1	-	1	1	-	-	5	2	3	2	-	2	2	-	2	1	5
Dog	6	4	3	4	5	-	-	1	2	3	1	1	1	1	1	1	-	1	1	-
Ferret	-	-	1	-	-	1	-	-	-	-	-	-	-	-	-	-	-	-	-	-
Fisher	-	1	-	-	-	-	-	-	-	-	-	-	-	-	1	-	-	-	-	-
Fox	-	-	-	-	-	-	-	-	-	-	-	-	-	-	-	1	-	-	-	-
Fox, Gray	16	11	22	23	43	40	38	37	24	26	16	25	21	25	17	12	14	31	21	21
Fox, Red	17	11	10	13	10	11	6	8	12	12	3	5	3	6	8	7	10	3	5	7
Goat	1	-	-	1	2	-	-	13	1	-	2	-	-	-	-	-	1	-	1	1
Guinea Pig	-	-	-	-	-	-	-	-	-	-	1	-	-	-	-	-	-	-	-	-
Horse	4	7	3	2	2	4	7	1	2	2	1	-	2	2	2	1	-	2	-	1
Llama	-	-	-	-	-	-	-	-	-	-	-	-	-	-	-	-	-	-	-	-
Mink	-	-	-	-	-	-	-	-	-	-	-	-	-	-	-	-	-	-	-	1
Mule	-	-	-	-	-	-	-	-	-	-	-	-	1	-	-	-	-	-	-	-
Muskrat	-	-	-	-	-	-	-	-	-	-	-	-	-	-	-	-	-	-	-	-
Opossum	2	-	-	-	2	-	-	1	-	-	-	-	-	-	-	-	-	-	-	-
Otter	-	-	-	-	-	1	-	-	-	-	1	1	-	1	-	-	-	-	1	1
Pig	1	-	-	-	-	-	-	-	-	-	-	-	-	-	-	-	-	-	-	-
Rabbit	-	-	-	-	1	-	-	-	3	-	-	-	-	-	-	-	-	-	-	-
Rabbit, Domestic	-	1	-	1	-	-	-	-	-	-	-	-	-	-	-	1	-	-	-	-
Raccoon	2320	1271	842	684	836	689	513	410	415	339	195	253	334	320	282	263	226	250	162	186
Sheep	-	-	-	-	2	-	-	-	-	-	-	-	-	-	-	-	1	1	-	-
Skunk	160	168	182	229	236	195	187	202	164	172	74	103	86	95	75	63	72	85	62	53
Woodchuck	19	13	7	10	10	8	10	4	12	8	4	5	3	4	6	4	3	5	7	7
Other Wild	-	-	-	-	-	-	-	1	-	-	-	-	-	-	-	-	-	-	-	-
TOTALS	###	1570	1158	1080	1267	1102	921	838	782	707	424	532	565	612	515	498	440	499	370	425

Percent Change - Specimen Submissions**New York State Rabies Laboratory****Known or potential human exposure**

	2012	2011	Change	% Change
Albany	114	132	-18	-15.8%
Allegany	36	22	14	38.9%
Bronx	2	6	-4	-200.0%
Broome	92	89	3	3.3%
Cattaraugus	118	93	25	21.2%
Cayuga	77	49	28	36.4%
Chautauqua	81	54	27	33.3%
Chemung	54	37	17	31.5%
Chenango	42	37	5	11.9%
Clinton	43	39	4	9.3%
Columbia	46	59	-13	-28.3%
Cortland	40	42	-2	-5.0%
Delaware	30	33	-3	-10.0%
Dutchess	69	82	-13	-18.8%
Erie	692	639	53	7.7%
Essex	37	19	18	48.6%
Franklin	28	18	10	35.7%
Fulton	19	8	11	57.9%
Genesee	39	40	-1	-2.6%
Greene	20	24	-4	-20.0%
Hamilton	1	1	0	0.0%
Herkimer	32	24	8	25.0%
Jefferson	97	91	6	6.2%
Kings	1	3	-2	-200.0%
Lewis	47	33	14	29.8%
Livingston	23	39	-16	-69.6%
Madison	44	40	4	9.1%
Monroe	155	113	42	27.1%
Montgomery	19	15	4	21.1%
Nassau	124	132	-8	-6.5%
New York	6	1	5	83.3%
Niagara	104	117	-13	-12.5%
Oneida	116	120	-4	-3.4%
Onondaga	355	252	103	29.0%
Ontario	123	87	36	29.3%
Orange	131	111	20	15.3%
Orleans	36	33	3	8.3%
Oswego	105	65	40	38.1%
Otsego	56	35	21	37.5%
Out-Of-State	6	4	2	33.3%
Putnam	56	35	21	37.5%
Queens	5	2	3	60.0%
Rensselaer	53	61	-8	-15.1%
Rockland	46	64	-18	-39.1%
Saratoga	82	71	11	13.4%
Schenectady	71	82	-11	-15.5%
Schoharie	19	16	3	15.8%
Schuyler	14	16	-2	-14.3%
Seneca	19	33	-14	-73.7%
St. Lawrence	100	71	29	29.0%
Steuben	62	53	9	14.5%
Suffolk	88	80	8	9.1%
Sullivan	33	32	1	3.0%
Tioga	44	45	-1	-2.3%
Tompkins	122	120	2	1.6%
Ulster	69	72	-3	-4.3%
Warren	44	29	15	34.1%
Washington	72	51	21	29.2%
Wayne	43	47	-4	-9.3%
Westchester	135	148	-13	-9.6%
Wyoming	31	38	-7	-22.6%
Yates	20	23	-3	-15.0%
Grand	4488	4027	461	10.3%

2012 Rabies Specimen Submissions

TOTAL SPECIMENS RECEIVED = 6657



- Human Contact Total Specimens (67.4%)
- Both Human and Animal Contact (15.3%)
- Animal Contact- Domestic or Companion (6.2%)
- No Human or Animal Contact (USDA Specimens) (1.5%)
- Bats with unknown contact - "Bat in the Bedroom" (16.9%)

Summary of Animals Rabies Testing Performed to Date by NYC Rabies Laboratory 2012
January - December 2012

SPECIES	BRONX			KINGS (BROOKLYN)			NEW YORK (MANHATTAN)			OUT OF TOWN			QUEENS			RICHMOND (STATEN ISLAND)			Grand Total		
	# tested	# pos	% pos	# tested	# pos	% pos	# tested	# pos	% pos	# tested	# pos	% pos	# tested	# pos	% pos	# tested	# pos	% pos	# tested	# pos	% pos
BAT	2	0	0.0%	5	1	20.0%	20	2	10.0%	0	0	0.0%	6	0	0.0%	4	0	0.0%	37	3	2.9%
CAT	6	0	0.0%	21	0	0.0%	19	0	0.0%	0	0	0.0%	19	0	0.0%	12	0	0.0%	77	0	0.0%
COYOTE	1	0	0.0%	0	0	0.0%	0	0	0.0%	0	0	0.0%	0	0	0.0%	0	0	0.0%	1	0	0.0%
DOG	7	0	0.0%	5	0	0.0%	8	0	0.0%	0	0	0.0%	3	0	0.0%	3	0	0.0%	26	0	0.0%
FERRET	0	0	0.0%	0	0	0.0%	0	0	0.0%	0	0	0.0%	0	0	0.0%	0	0	0.0%	0	0	0.0%
FOX	0	0	0.0%	0	0	0.0%	0	0	0.0%	0	0	0.0%	0	0	0.0%	0	0	0.0%	0	0	0.0%
GROUNDHOG	0	0	0.0%	1	0	0.0%	0	0	0.0%	0	0	0.0%	0	0	0.0%	1	0	0.0%	2	0	0.0%
GUINEA PIG	0	0	0.0%	0	0	0.0%	0	0	0.0%	0	0	0.0%	0	0	0.0%	0	0	0.0%	0	0	0.0%
HAMSTER	0	0	0.0%	0	0	0.0%	0	0	0.0%	0	0	0.0%	0	0	0.0%	0	0	0.0%	0	0	0.0%
HORSE	0	0	0.0%	0	0	0.0%	0	0	0.0%	0	0	0.0%	1	0	0.0%	0	0	0.0%	0	0	0.0%
MONKEY	0	0	0.0%	0	0	0.0%	0	0	0.0%	0	0	0.0%	0	0	0.0%	0	0	0.0%	0	0	0.0%
MUSKRAT	0	0	0.0%	0	0	0.0%	1	0	0.0%	0	0	0.0%	0	0	0.0%	0	0	0.0%	1	0	0.0%
OPOSSUM	11	1	9.1%	10	0	0.0%	0	0	0.0%	0	0	0.0%	7	0	0.0%	7	0	0.0%	35	1	2.9%
RABBIT	0	0	0.0%	0	0	0.0%	0	0	0.0%	0	0	0.0%	0	0	0.0%	0	0	0.0%	0	0	0.0%
RACCOON	24	2	8.3%	48	1	2.1%	31	0	0.0%	0	0	0.0%	67	0	0.0%	24	6	25.0%	194	9	4.6%
SKUNK	7	0	0.0%	0	0	0.0%	3	0	0.0%	0	0	0.0%	1	0	0.0%	0	0	0.0%	11	0	0.0%
SQUIRREL	0	0	0.0%	0	0	0.0%	0	0	0.0%	0	0	0.0%	1	0	0.0%	0	0	0.0%	1	0	0.0%
Grand Total	58	3	5.2%	90	2	2.2%	82	2	2.4%	0	0	0.0%	105	0	0.0%	51	6	11.8%	386	13	3.4%

Notes:

- % positivity noted only when value ≠ 0.
- 13 (3.4%) of all 386 specimens tested by the Rabies Laboratory from January 1st through December 31st were rabies-positive.
- There were no inconclusive results and 2 unfit specimens refused for testing.

Animals Rabies Testing Performed by NYC Rabies Laboratory to Date Compared to Previous Years by Animal

January - December 2008- January - December 2012

ANIMAL	2008			2009			2010			2011			2012		
	# tested	# pos	% pos	# tested	# pos	% pos	# tested	# pos	% pos	# tested	# pos	% pos	# tested	# pos	% pos
BAT	48	2	4.2%	39	1	2.6%	38	3	7.9%	20	3	15.0%	37	3	8.1%
CAT	178	1	0.6%	116	0	0.0%	87	1	1.1%	88	1	1.1%	77	0	0.0%
DEER	0	0	0.0%	0	0	0.0%	0	0	0.0%	0	0	0.0%	0	0	0.0%
DOG	81	0	0.0%	38	0	0.0%	51	0	0.0%	28	0	0.0%	26	0	0.0%
FERRET	0	0	0.0%	0	0	0.0%	0	0	0.0%	0	0	0.0%	0	0	0.0%
FOX	0	0	0.0%	0	0	0.0%	0	0	0.0%	1	0	0.0%	0	0	0.0%
GROUNDHOG	0	0	0.0%	1	0	0.0%	1	0	0.0%	0	0	0.0%	2	0	0.0%
GUINEA PIG	0	0	0.0%	0	0	0.0%	0	0	0.0%	0	0	0.0%	0	0	0.0%
HORSE	0	0	0.0%	1	0	0.0%	0	0	0.0%	0	0	0.0%	1	0	0.0%
HAMSTER	0	0	0.0%	0	0	0.0%	0	0	0.0%	0	0	0.0%	0	0	0.0%
MONKEY	1	0	0.0%	0	0	0.0%	0	0	0.0%	0	0	0.0%	0	0	0.0%
MUSKRAT	6	0	0.0%	0	0	0.0%	0	0	0.0%	0	0	0.0%	1	0	0.0%
OPOSSUM	69	0	0.0%	70	0	0.0%	21	1	4.8%	26	0	0.0%	35	1	2.9%
RABBIT	0	0	0.0%	0	0	0.0%	0	0	0.0%	1	0	0.0%	0	0	0.0%
RACCOON	315	9	2.9%	292	28	9.6%	339	138	40.7%	144	9	6.3%	194	9	4.6%
SKUNK	34	7	20.6%	15	0	0.0%	11	1	9.1%	5	0	0.0%	11	0	0.0%
SQUIRREL	2	0	0.0%	1	0	0.0%	0	0	0.0%	0	0	0.0%	1	0	0.0%
OTHER	0	0	0.0%	0	0	0.0%	3	1	33.3%	2	0	0.0%	1	0	0.0%
Grand Total	734	19	2.6%	573	29	5.1%	551	145	26.3%	315	13	4.1%	386	13	3.4%

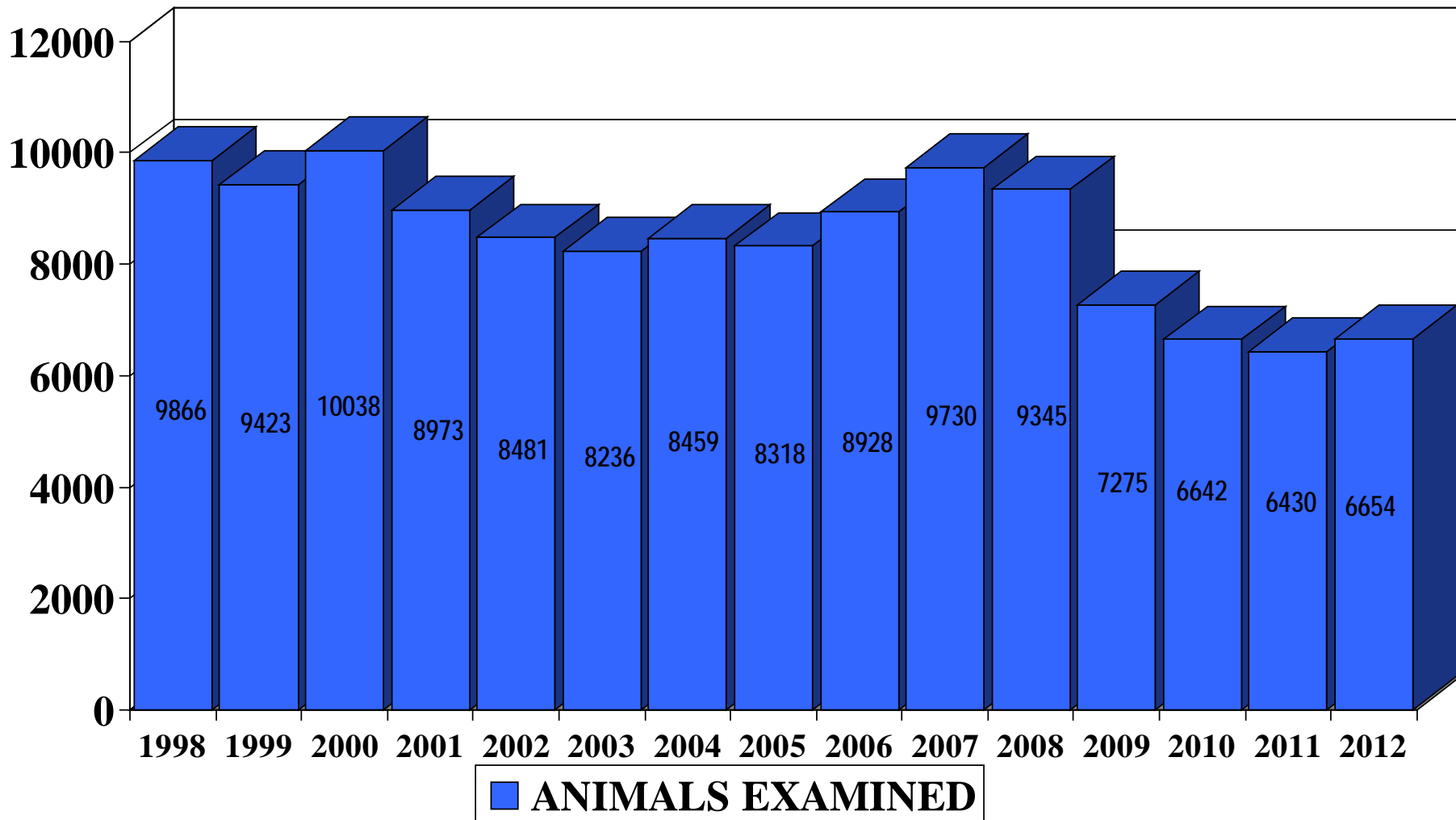
Animals Rabies Testing Performed by NYC Rabies Laboratory to Date Compared to Previous Years by County

January-December 2008-January-December 2012

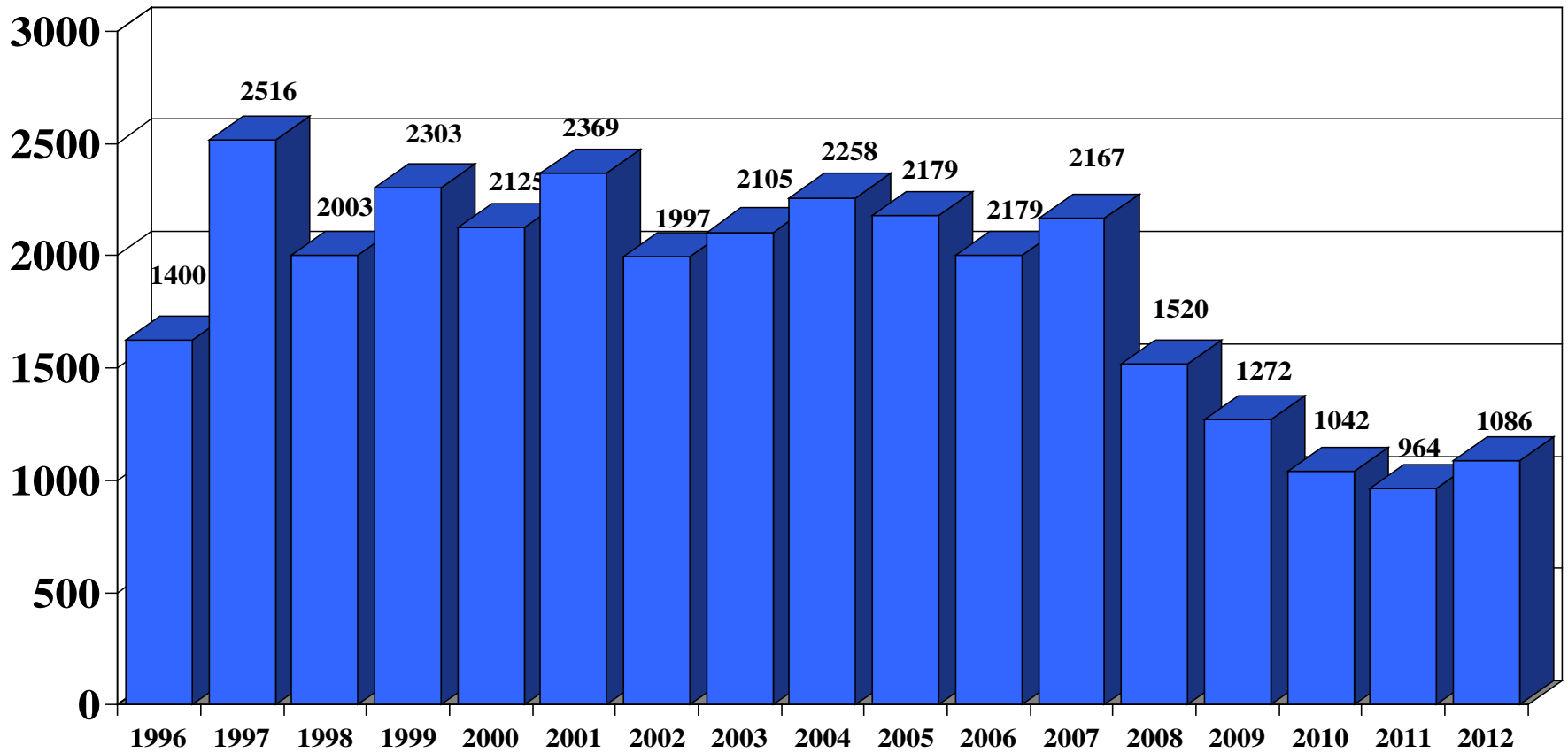
COUNTY	2008			2009			2010			2011			2012		
	# tested	# pos	% pos	# tested	# pos	% pos	# tested	# pos	% pos	# tested	# pos	% pos	# tested	# pos	% pos
BRONX	178	13	7.3%	138	15	10.9%	81	18	22.2%	61	9	14.8%	58	3	5.2%
BROOKLYN	83	1	1.2%	65	0	0.0%	58	2	3.4%	54	0	0.0%	90	2	2.2%
MANHATTAN	97	0	0.0%	117	12	10.3%	267	123	46.1%	79	3	3.8%	82	2	2.4%
QUEENS	244	1	0.4%	204	1	0.5%	107	2	1.9%	71	0	0.0%	105	0	0.0%
STATEN ISLAND	129	4	3.1%	48	1	2.1%	38	0	0.0%	46	0	0.0%	51	6	11.8%
OUTSIDE NYC	3	0	0.0%	1	0	0.0%	0	0	0.0%	4	1	25.0%	0	0	0.0%
Grand Total	734	19	2.6%	573	29	5.1%	551	145	26.3%	315	13	4.1%	386	13	3.4%

ANIMALS EXAMINED

Wadsworth Center Rabies Laboratory
15 year period



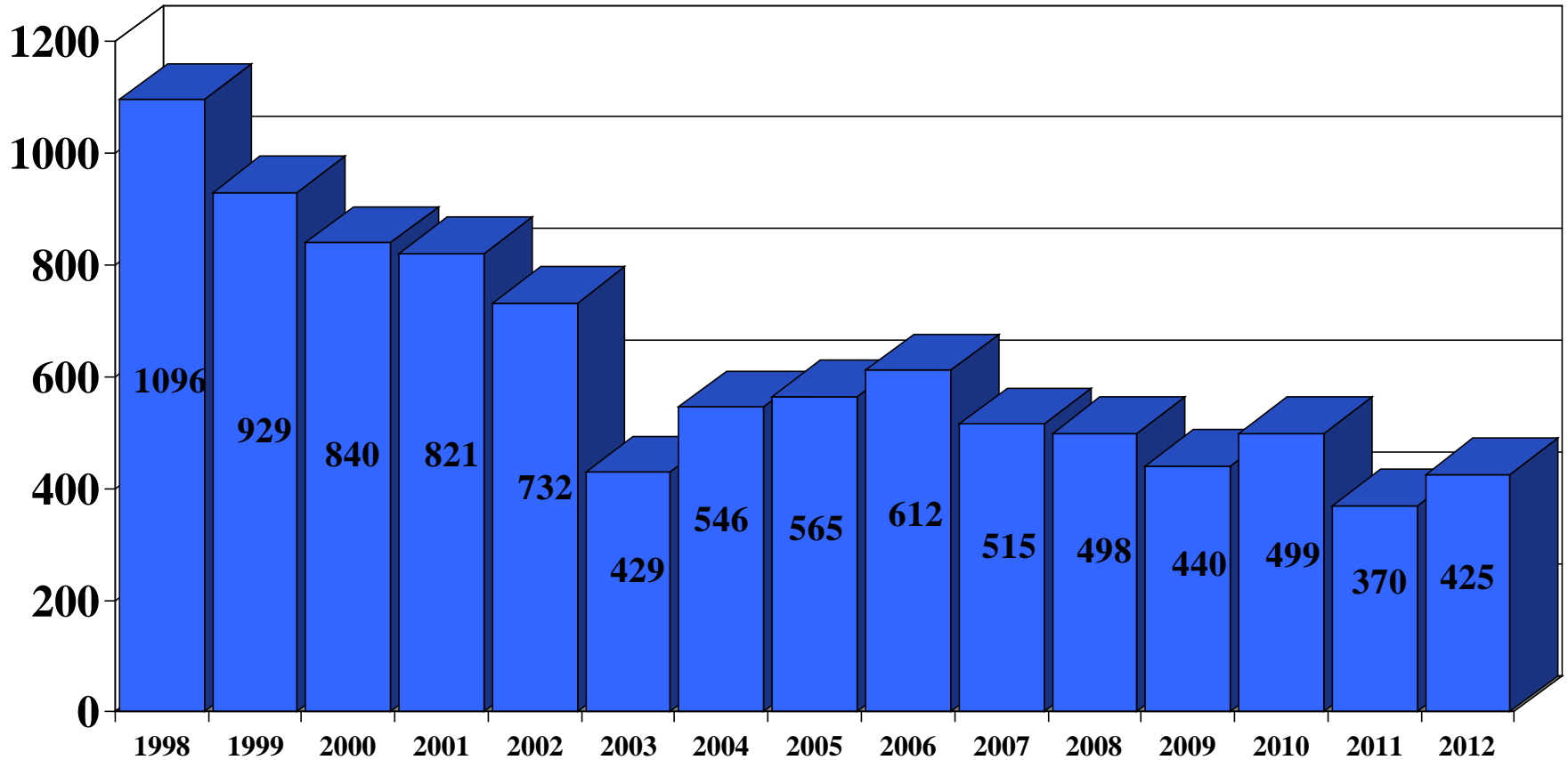
**RABIES ANTIBODY TESTS
HUMAN SERUM
WADSWORTH CENTER RABIES LABORATORY
15-YEAR PERIOD**



CONFIRMED RABID ANIMALS

WADSWORTH CENTER RABIES LABORATORY

15 YEAR PERIOD

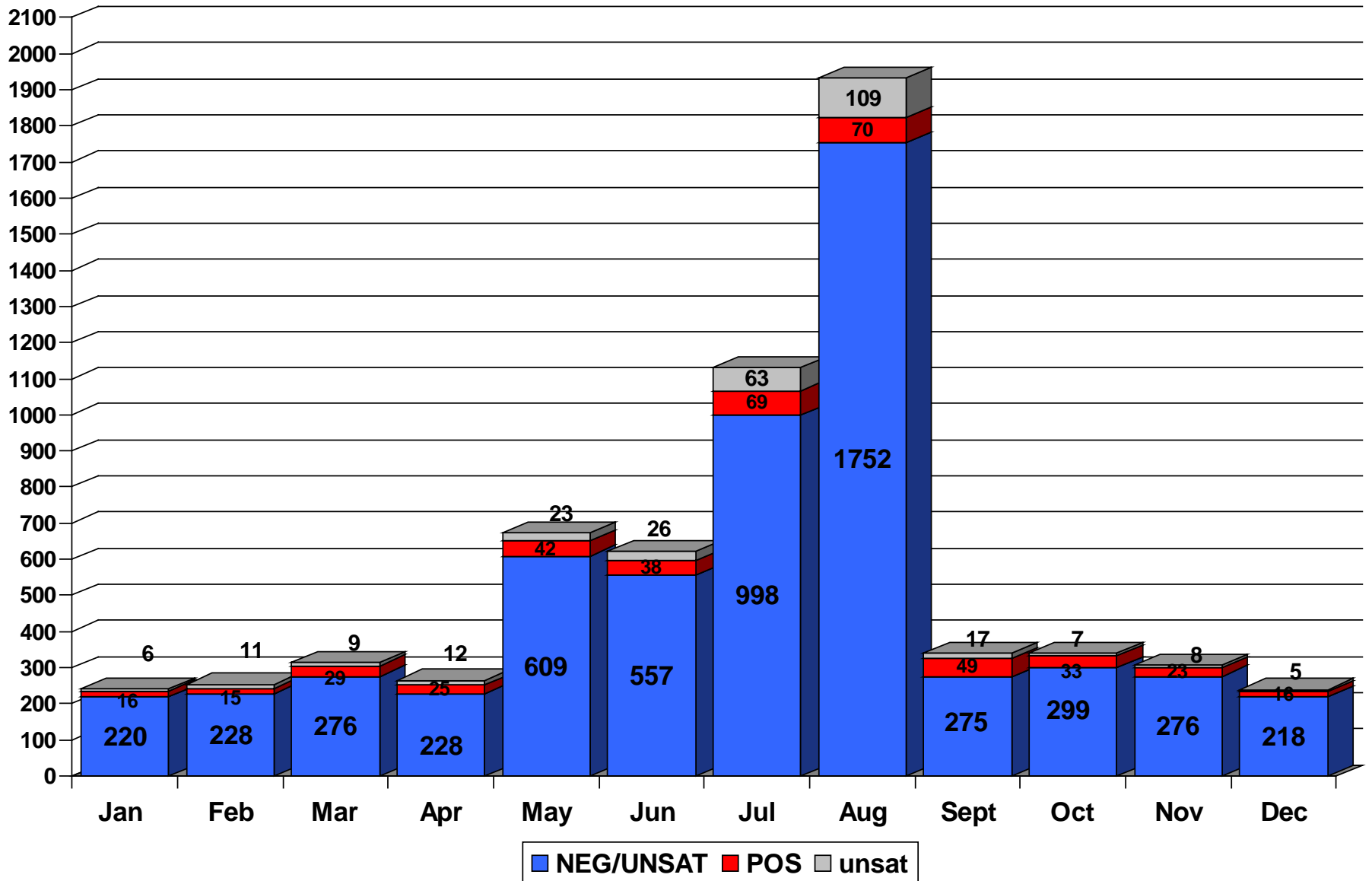


RABIES LABORATORY
NYS DOH
WADSWORTH CENTER

SPECIMENS RECEIVED

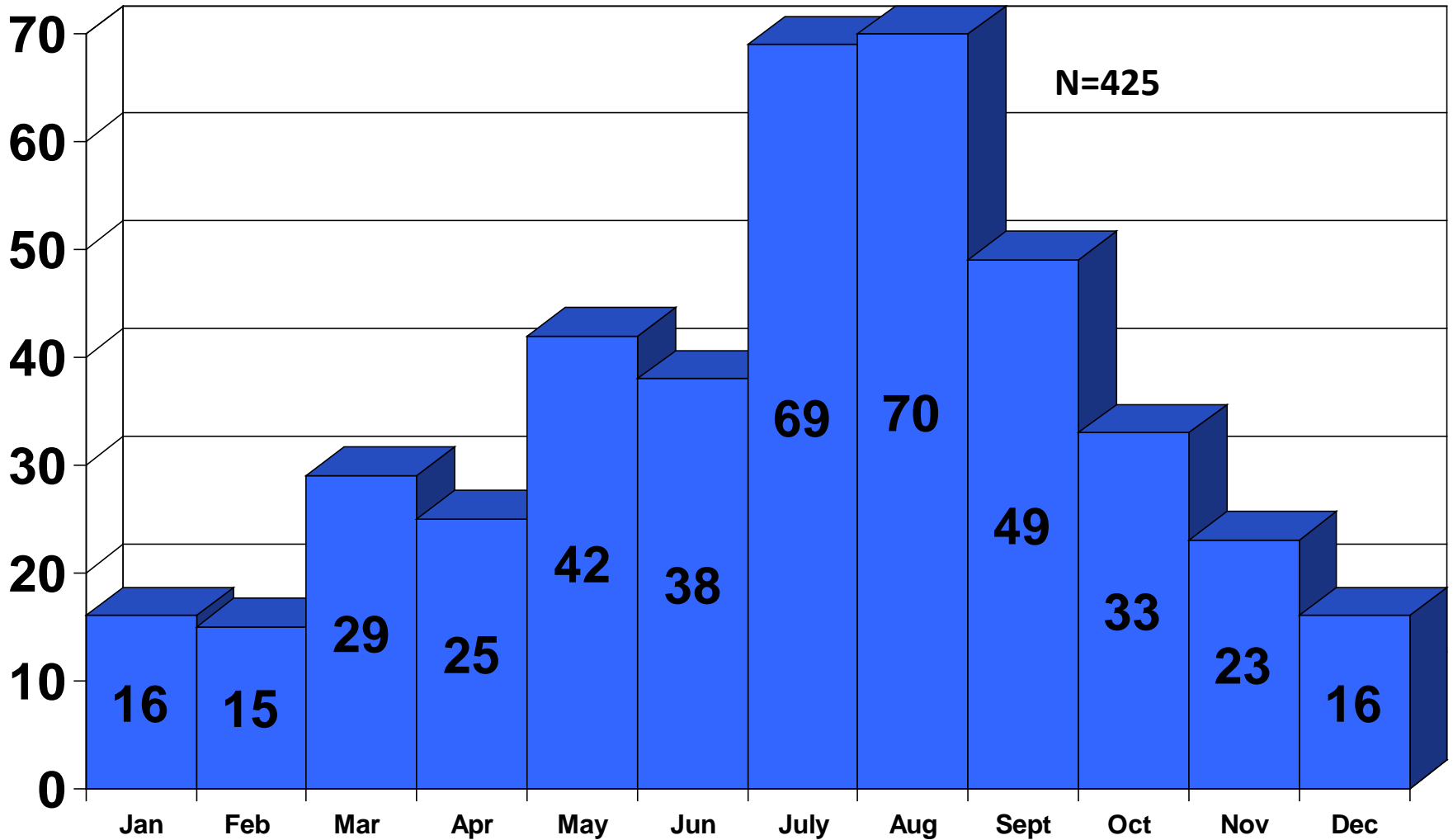
WADSWORTH CENTER RABIES LABORATORY

2012



RABID ANIMALS

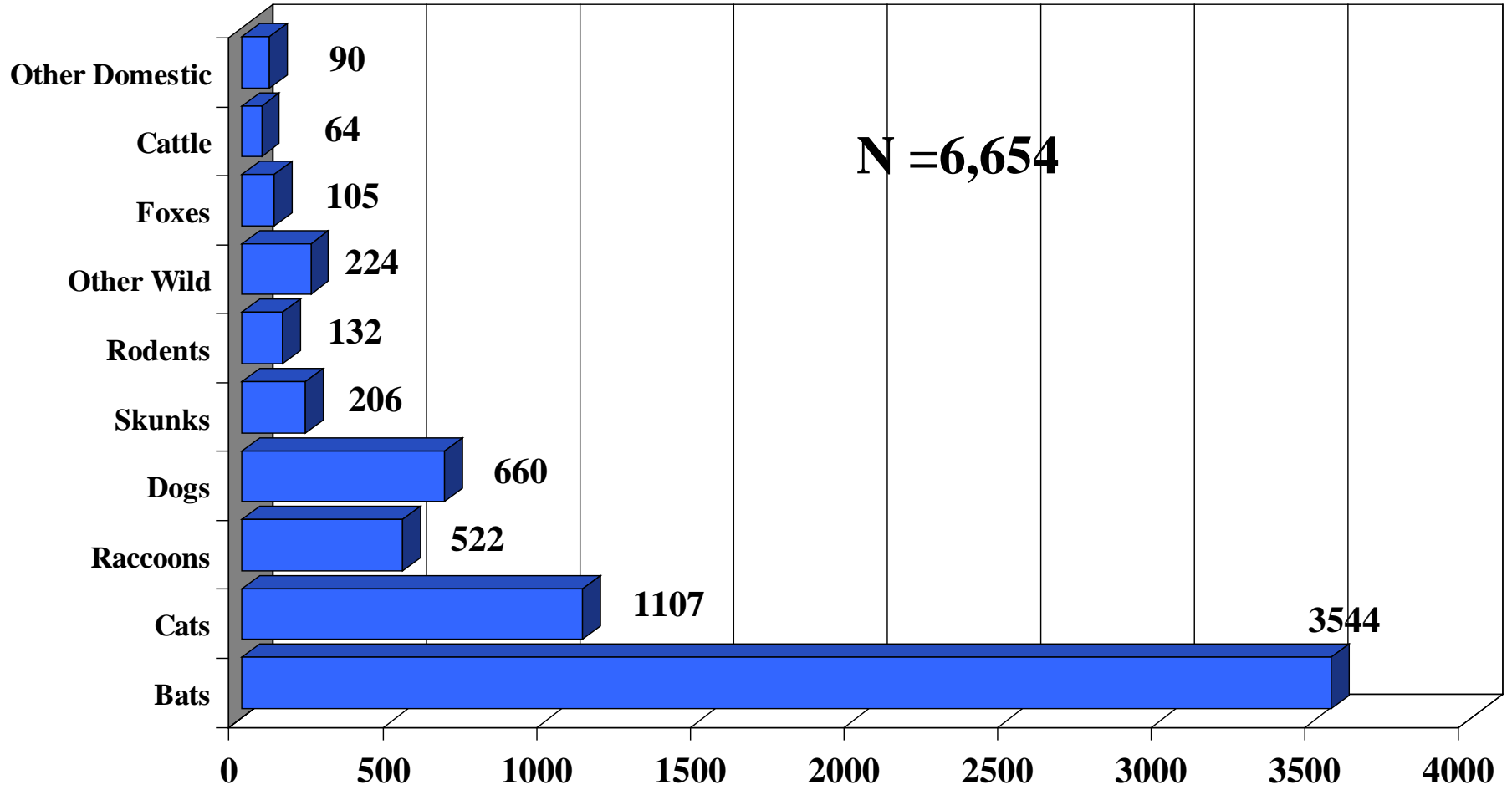
WADSWORTH CENTER RABIES LABAORATORY
2012



TESTS FOR RABIES IN ANIMALS

WADSWORTH CENTER RABIES LABORATORY

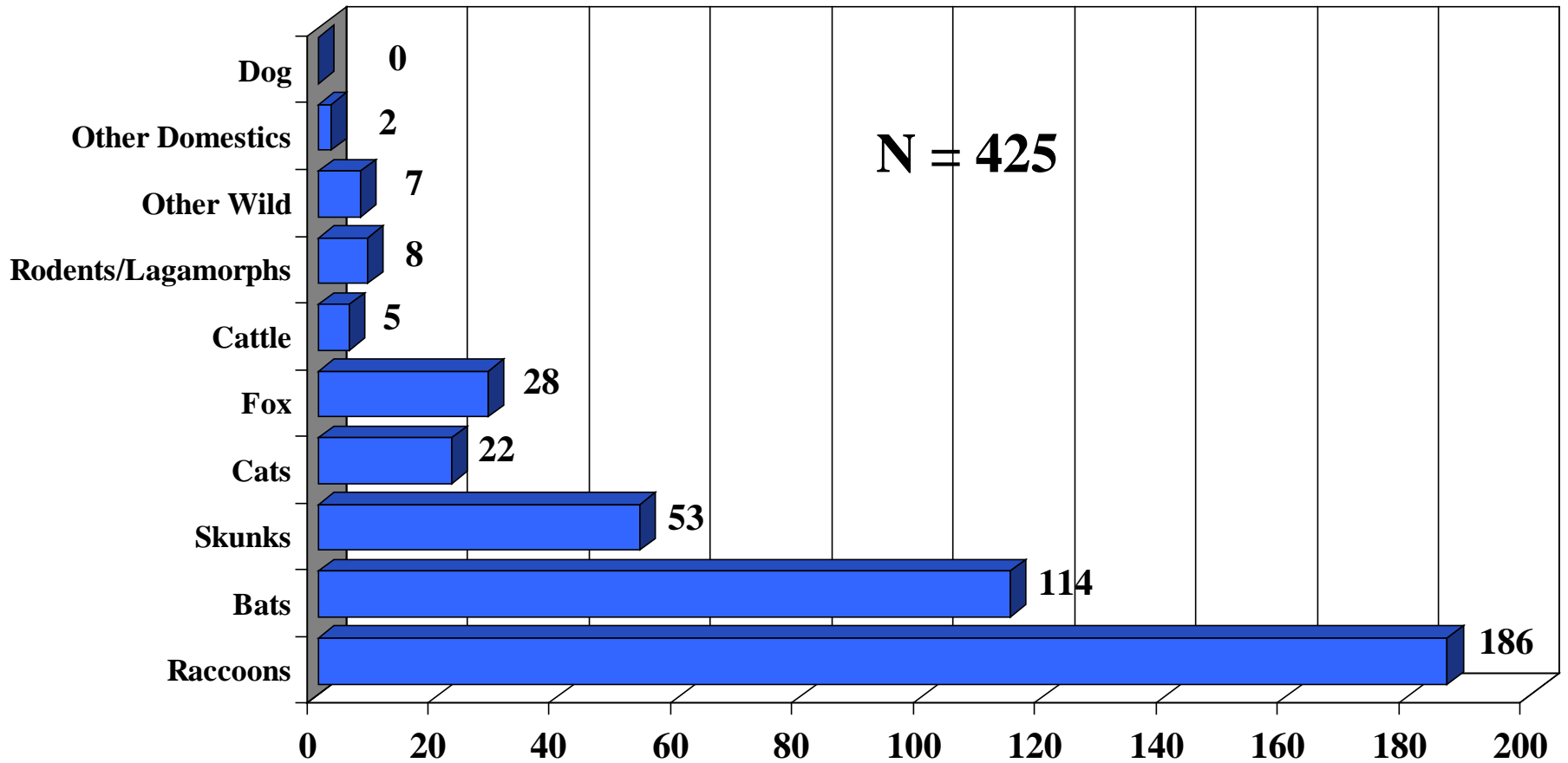
2012



CONFIRMED RABIES IN ANIMALS

WADSWORTH CENTER RABIES LABORATORY

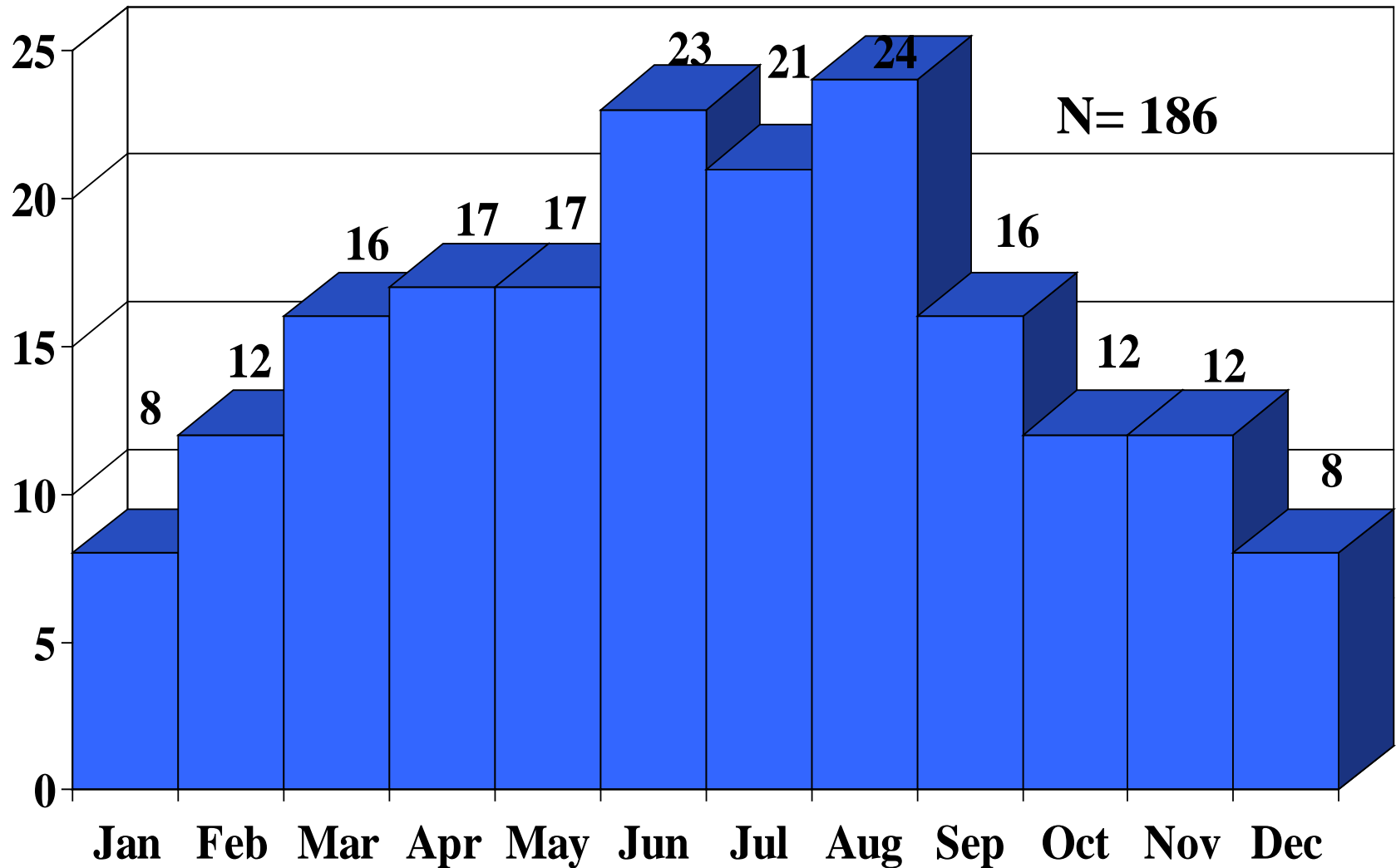
2012



RABID RACCOONS

WADSWORTH CENTER RABIES LABORATORY

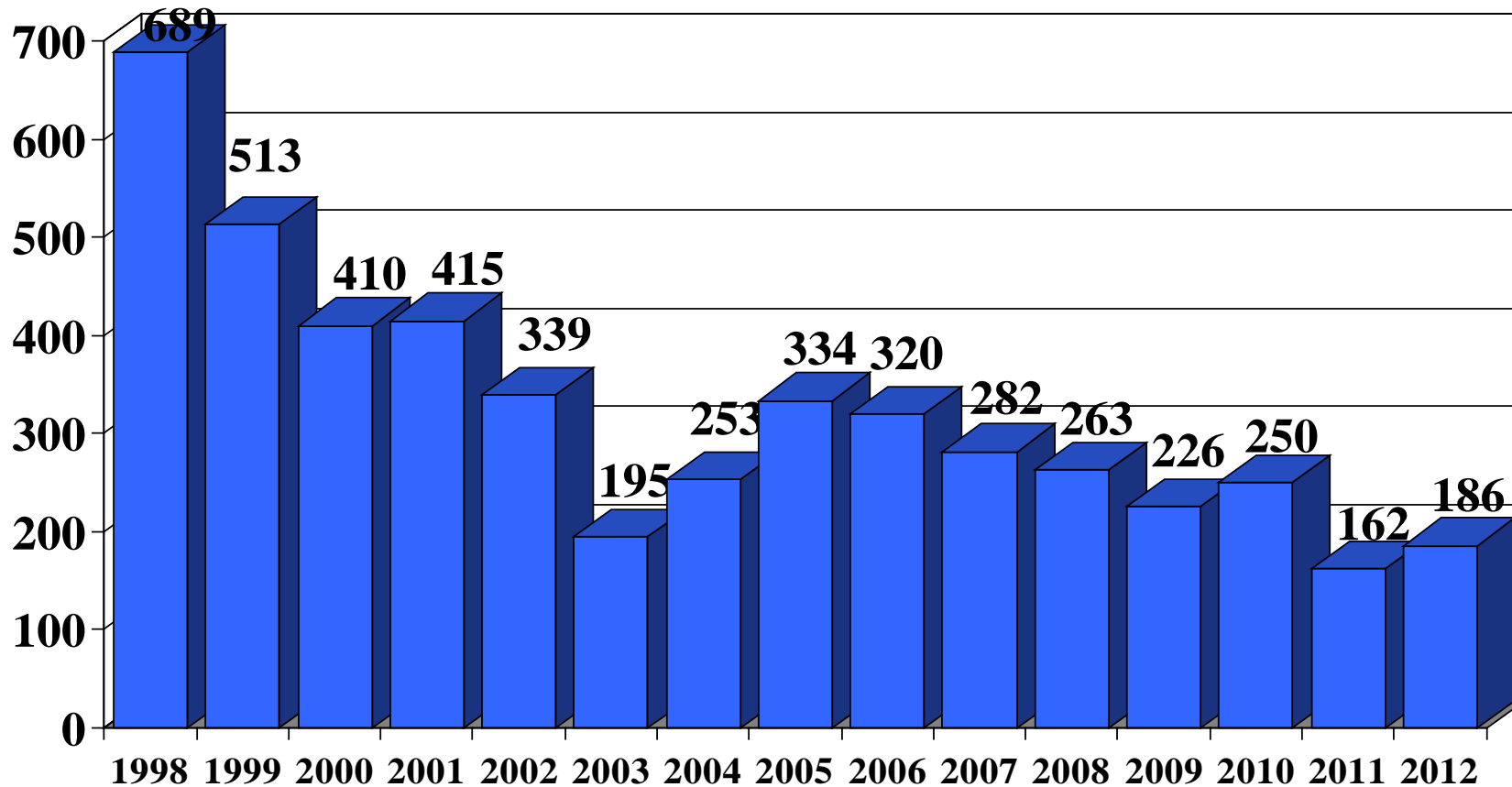
2012



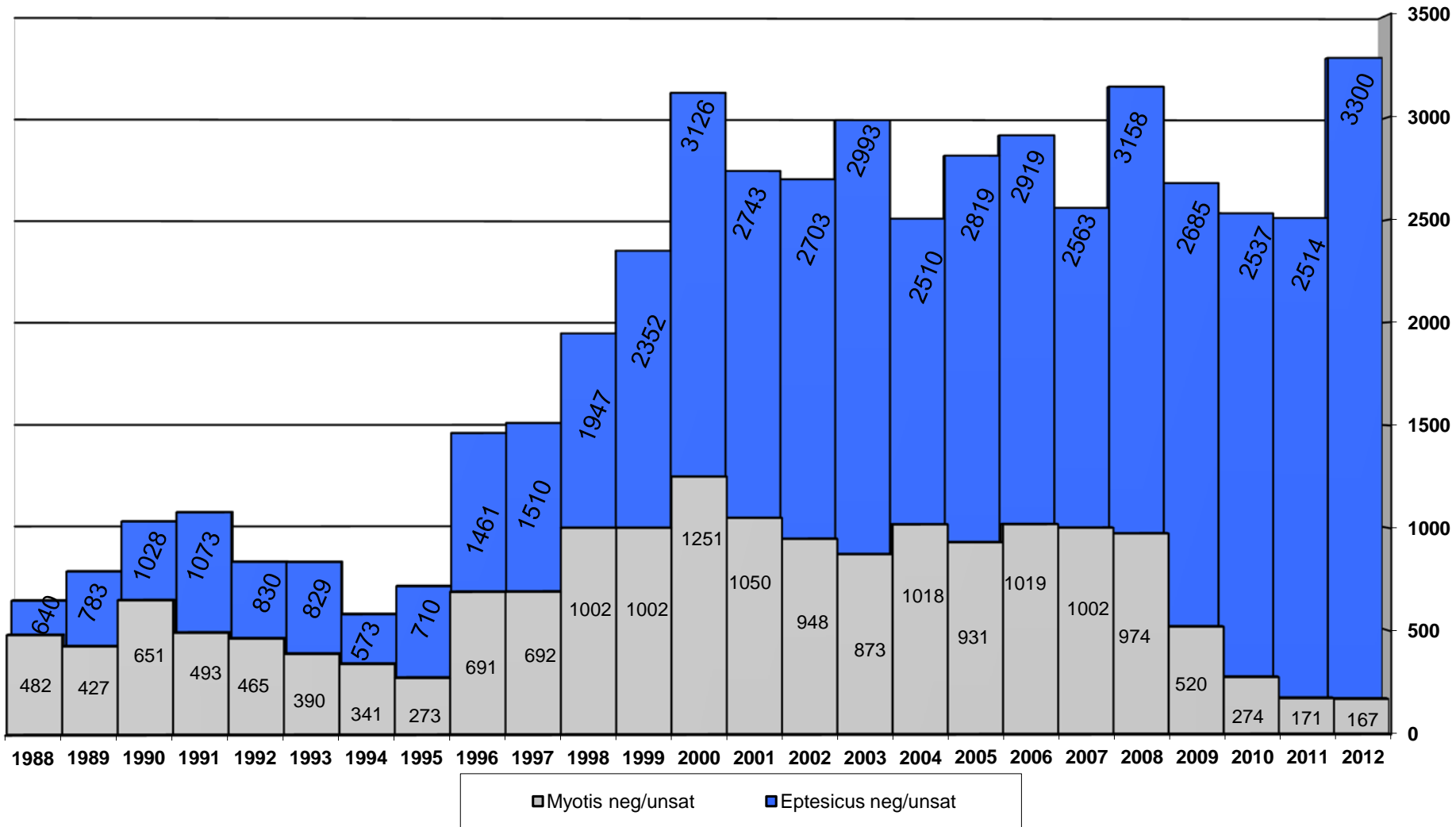
RABIES DIAGNOSED IN RACCOONS

WADSWORTH CENTER RABIES LABORATORY

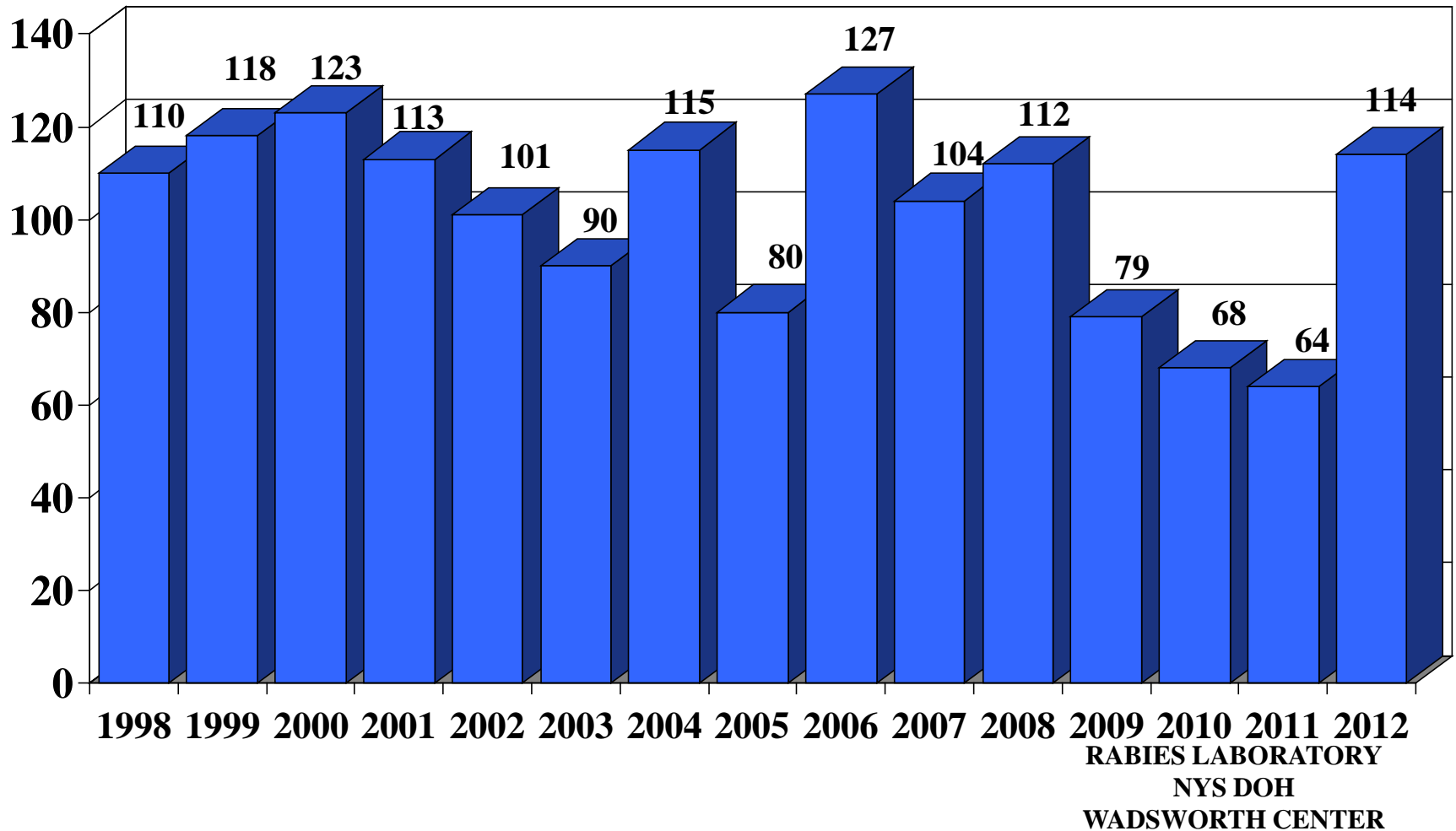
1998-2012



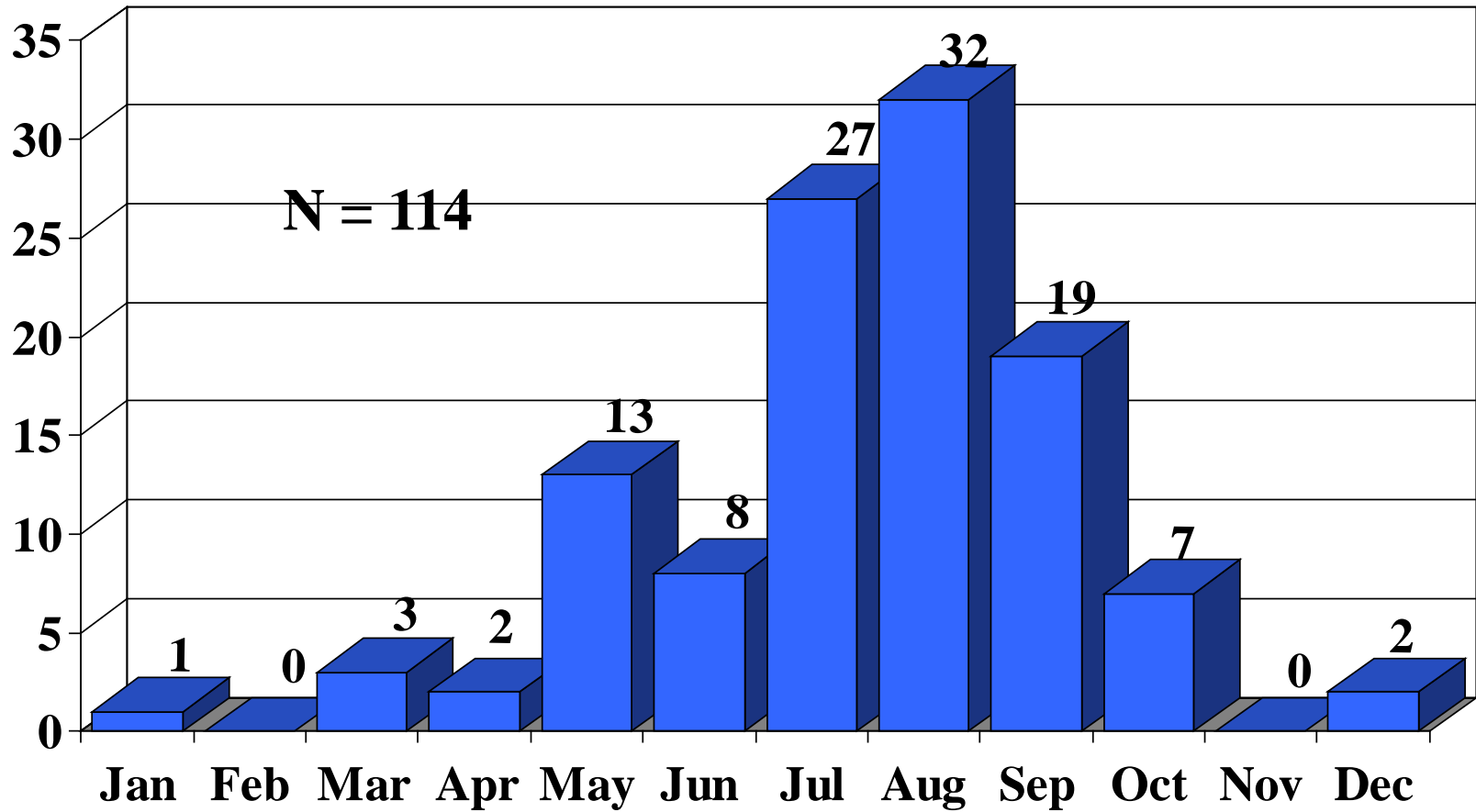
MYOTIS and EPTESICUS SUBMISSIONS FOR 25-YEARS WADSWORTH CENTER RABIES LABORATORY



RABIES DIAGNOSED IN BATS WADSWORTH CENTER RABIES LABORATORY 15 YEAR PERIOD



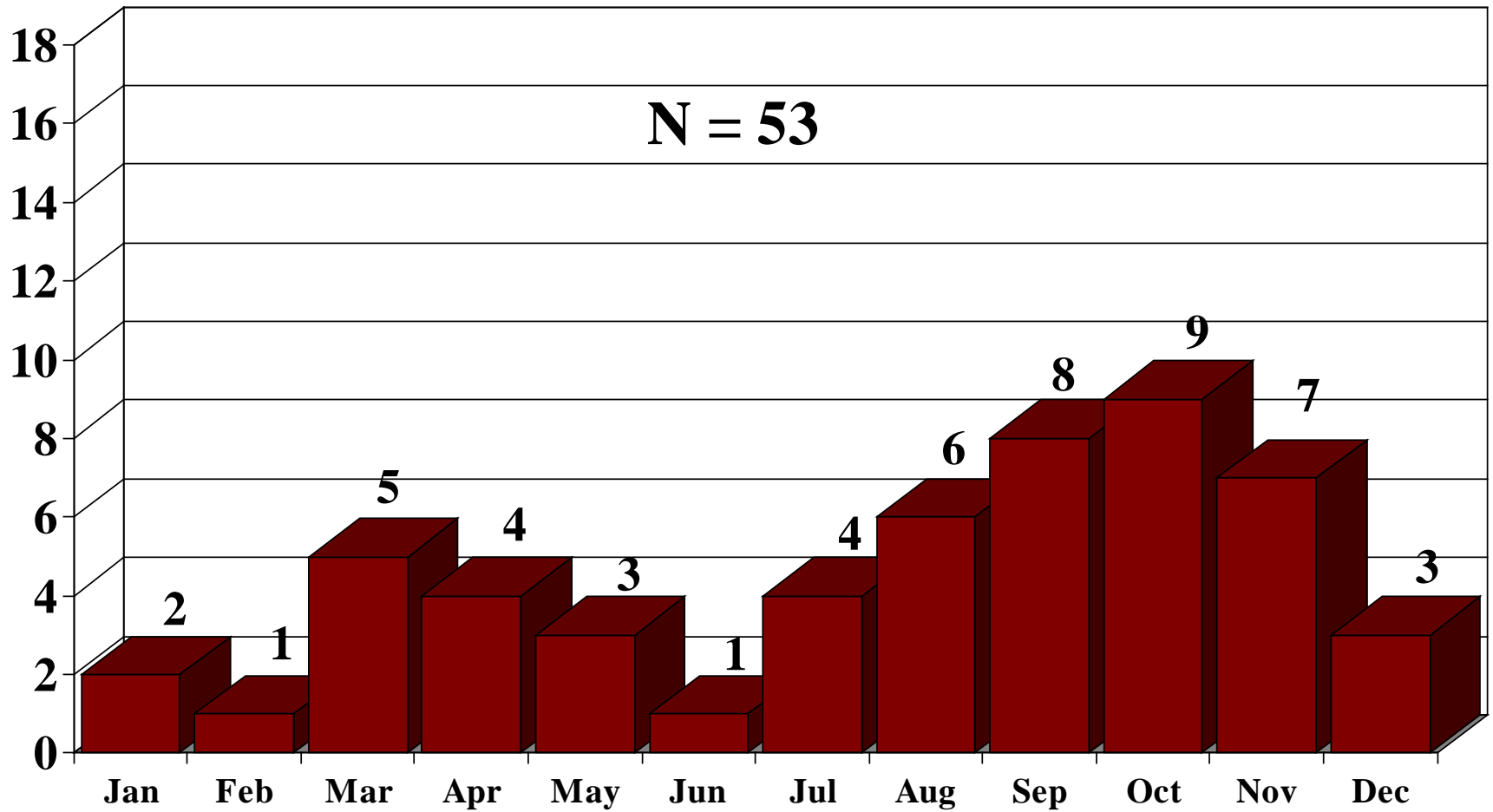
RABID BATS NEW YORK STATE 2012



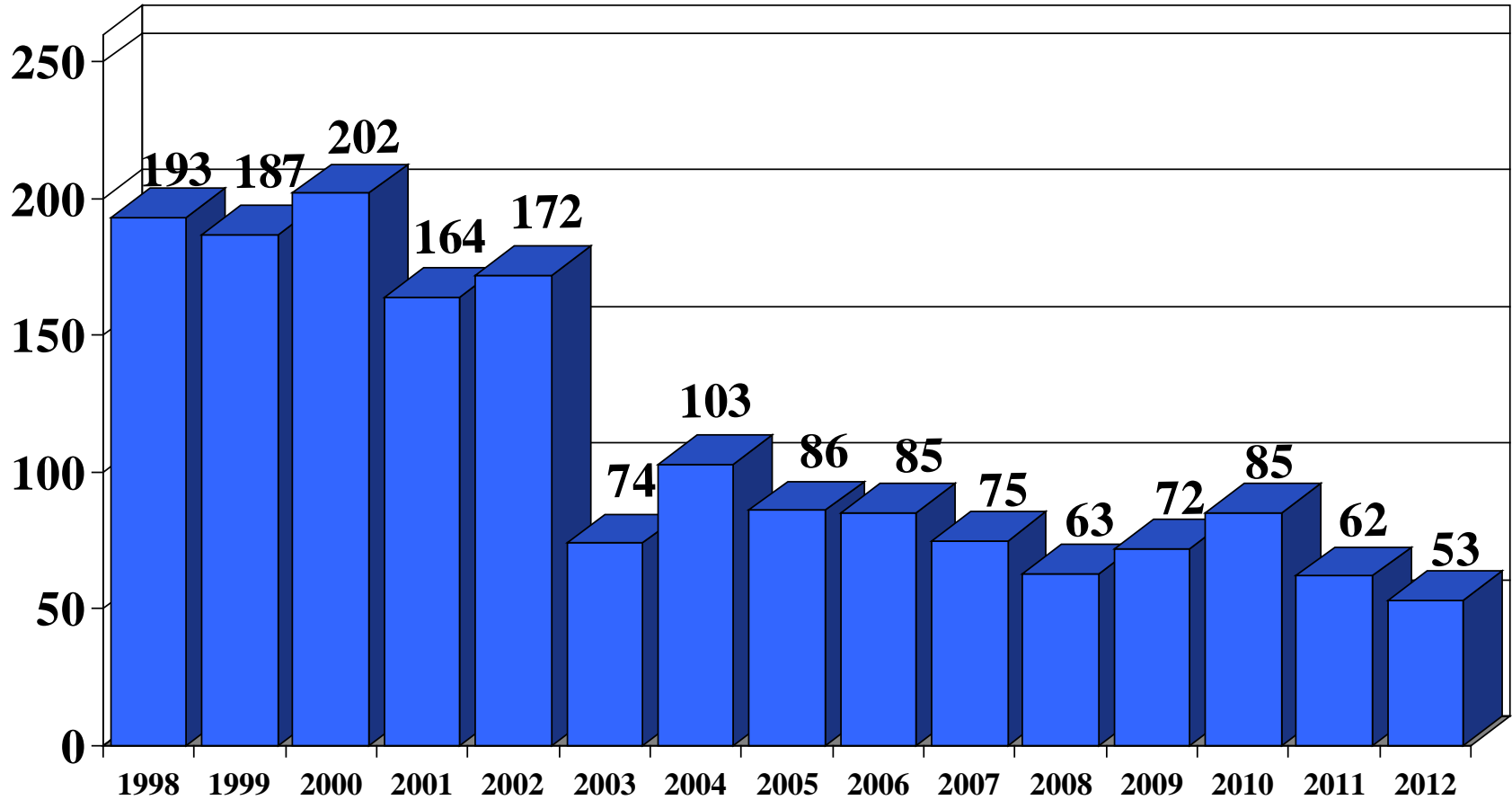
RABID SKUNKS

WADSWORTH CENTER RABIES LABORATORY

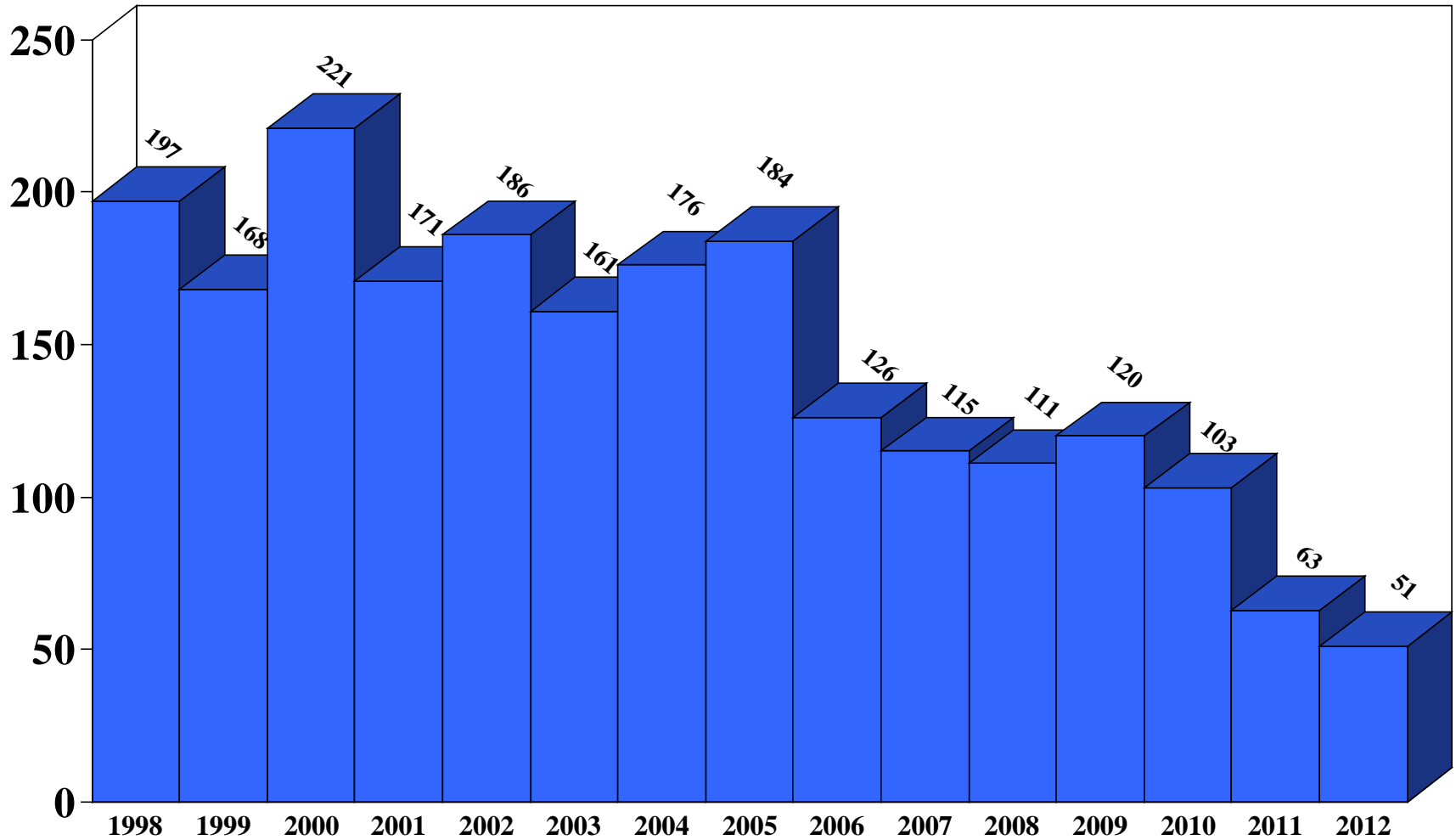
2012



**RABIES DIAGNOSED IN SKUNKS
WADSWORTH CENTER RABIES LABORATORY
15-YEAR PERIOD**



EMERGENCY AFTER HOURS EXAMINATIONS 2012



ACKNOWLEDGEMENTS

TECHNICAL STAFF CONTRIBUTING TO 2012 RABIES DIAGNOSTICS

- KIM APPLER
- KATHLEEN BROWN
- MICHELLE DUPUIS
- D. PATRICK FITZGERALD
- JODIE JARVIS
- RONALD JARVIS
- CRAIG POULIOTT

MAPPING, DATA MANAGEMENT AND ANALYSIS

- ANNE CLOBRIDGE

List of Positives by County and Locality

Between 01/01/2012 and 12/31/2012

County	Locality	Animal	Date	Lab#
Albany	ALBANY CITY	BAT, Big Brown	9/12/2012	12-05559
Albany	ALBANY CITY	BAT, Big Brown	6/26/2012	12-02270
Albany	ALBANY CITY	BAT, Big Brown	3/19/2012	12-00666
Albany	ALBANY CITY	RACCOON	11/8/2012	12-06188
Albany	BETHLEHEM TOWN	BAT, Big Brown	9/4/2012	12-05439
Albany	BETHLEHEM TOWN	FOX, Red	6/15/2012	12-02061
Albany	BETHLEHEM TOWN	RACCOON	10/15/2012	12-05925
Albany	BETHLEHEM TOWN	SKUNK	7/24/2012	12-03063
Albany	BETHLEHEM TOWN	SKUNK	7/19/2012	12-02841
Albany	BETHLEHEM TOWN	SKUNK	10/24/2012	12-06055
Albany	GUILDERLAND TOWN	BAT, Big Brown	5/7/2012	12-01141
Albany	GUILDERLAND TOWN	BAT, Big Brown	7/24/2012	12-03029
Albany	GUILDERLAND TOWN	BAT, Big Brown	8/3/2012	12-03736
Albany	GUILDERLAND TOWN	SKUNK	11/29/2012	12-06389
Albany	NEW SCOTLAND TOWN	DEER	10/16/2012	12-05960
Albany	NEW SCOTLAND TOWN	RACCOON	2/21/2012	12-00409
Albany	NEW SCOTLAND TOWN	RACCOON	2/7/2012	12-00302
Albany	NEW SCOTLAND TOWN	RACCOON	11/19/2012	12-06301
Albany	RENSSELAERVILLE TOWN	RACCOON	2/27/2012	12-00460
Allegany	ALMOND TOWN	BAT, Big Brown	7/16/2012	12-02682
Allegany	AMITY TOWN	BAT, Big Brown	7/25/2012	12-03073
Allegany	ANDOVER TOWN	RACCOON	10/5/2012	12-05829
Allegany	FRIENDSHIP TOWN	FOX, Gray	6/5/2012	12-01847
Allegany	GENESEE TOWN	RACCOON	7/3/2012	12-02402
Allegany	HUME TOWN	RACCOON	7/2/2012	12-02372
Allegany	WELLSVILLE TOWN	FOX, Gray	12/20/2012	12-06600
Broome	BARKER TOWN	SKUNK	7/3/2012	12-02403
Broome	UNION TOWN	CATTLE	8/21/2012	12-05032
Broome	UNION TOWN	FOX, Gray	2/28/2012	12-00464
Broome	VESTAL TOWN	FOX, Gray	9/11/2012	12-05535
Broome	WINDSOR TOWN	RACCOON	8/8/2012	12-04194
Cattaraugus	ALLEGANY TOWN	RACCOON	8/16/2012	12-04872
Cattaraugus	CARROLLTON TOWN	RACCOON	6/26/2012	12-02234
Cattaraugus	SALAMANCA TOWN	RACCOON	11/15/2012	12-06263
Cattaraugus	SARDINIA TOWN	CATTLE	2/7/2012	12-00305
Cayuga	AUBURN CITY	BAT, Big Brown	7/31/2012	12-03464
Cayuga	AURELIUS TOWN	RACCOON	6/12/2012	12-01960
Cayuga	BRUTUS TOWN	FOX, Gray	9/12/2012	12-05560
Cayuga	BRUTUS TOWN	RACCOON	4/26/2012	12-01052
Cayuga	BRUTUS TOWN	RACCOON	5/9/2012	12-01173
Cayuga	CATO TOWN	FOX, Red	6/20/2012	12-02130
Cayuga	CONQUEST TOWN	RACCOON	6/6/2012	12-01890
Cayuga	GENOA TOWN	RACCOON	9/4/2012	12-05436
Cayuga	MONTEZUMA TOWN	RACCOON	5/8/2012	12-01157
Cayuga	SCIPIO TOWN	RACCOON	8/7/2012	12-03984
Cayuga	SCIPIO TOWN	RACCOON	6/12/2012	12-01963
Cayuga	STERLING TOWN	RACCOON	10/24/2012	12-06047
Cayuga	SUMMERHILL TOWN	RACCOON	2/2/2012	12-00257
Chautauqua	ARKWRIGHT TOWN	RACCOON	6/20/2012	12-02131

County	Locality	Animal	Date	Lab#
Chautauqua	ELLERY TOWN	BAT, Big Brown	5/30/2012	12-01590
Chautauqua	FRENCH CREEK TOWN	CAT	8/14/2012	12-04734
Chautauqua	NORTH HARMONY TOWN	BAT, Small Brown	7/10/2012	12-02547
Chautauqua	PORTLAND TOWN	SKUNK	8/25/2012	12-05248
Chemung	ASHLAND TOWN	BAT, Big Brown	7/18/2012	12-02777
Chemung	BALDWIN TOWN	FOX, Gray	1/31/2012	12-00234
Chemung	BIG FLATS TOWN	BAT, Big Brown	6/15/2012	12-02043
Chemung	BIG FLATS TOWN	RACCOON	9/25/2012	12-05701
Chemung	ELMIRA CITY	BAT, Big Brown	8/8/2012	12-04191
Chemung	ELMIRA CITY	BAT, Big Brown	8/7/2012	12-04001
Chemung	ELMIRA CITY	BAT, Big Brown	10/16/2012	12-05932
Chemung	ELMIRA TOWN	BAT, Big Brown	10/24/2012	12-06049
Chemung	HORSEHEADS TOWN	RACCOON	4/26/2012	12-01055
Chemung	SOUTHPORT TOWN	RACCOON	8/28/2012	12-05313
Chemung	VAN ETEN TOWN	RACCOON	3/22/2012	12-00717
Chenango	COVENTRY TOWN	RACCOON	2/24/2012	12-00445
Chenango	NEW BERLIN TOWN	BAT, Big Brown	9/13/2012	12-05576
Chenango	NORWICH TOWN	RACCOON	9/28/2012	12-05754
Chenango	NORWICH TOWN	RACCOON	9/11/2012	12-05539
Chenango	OXFORD TOWN	RACCOON	5/9/2012	12-01174
Chenango	PITCHER TOWN	RACCOON	10/15/2012	12-05914
Chenango	SHERBURNE TOWN	RACCOON	3/21/2012	12-00697
Chenango	SHERBURNE TOWN	RACCOON	4/17/2012	12-00940
Clinton	AUSABLE TOWN	RACCOON	9/7/2012	12-05501
Clinton	AUSABLE TOWN	SKUNK	10/2/2012	12-05783
Clinton	AUSABLE TOWN	SKUNK	10/24/2012	12-06048
Clinton	AUSABLE TOWN	SKUNK	11/6/2012	12-06171
Clinton	CHAZY TOWN	BAT, Big Brown	7/20/2012	12-02870
Clinton	PERU TOWN	RACCOON	12/24/2012	12-06617
Clinton	PERU TOWN	SKUNK	11/8/2012	12-06195
Columbia	CHATHAM TOWN	RACCOON	6/15/2012	12-02040
Columbia	GALLATIN TOWN	SKUNK	3/16/2012	12-00658
Columbia	GERMANTOWN TOWN	BAT, Big Brown	5/9/2012	12-01182
Columbia	GHENT TOWN	FOX, Gray	7/10/2012	12-02588
Columbia	KINDERHOOK TOWN	CAT	3/17/2012	12-00659
Columbia	NEW LEBANON TOWN	BAT, Big Brown	6/13/2012	12-02009
Cortland	CORTLANDVILLE TOWN	RACCOON	8/30/2012	12-05381
Cortland	MARATHON TOWN	FOX, Gray	7/18/2012	12-02784
Cortland	WILLET TOWN	RACCOON	6/7/2012	12-01905
Delaware	SIDNEY TOWN	RACCOON	6/21/2012	12-02153
Delaware	WALTON TOWN	RACCOON	9/21/2012	12-05686
Dutchess	AMENIA TOWN	BAT, Big Brown	8/28/2012	12-05323
Dutchess	PAWLING TOWN	RACCOON	9/24/2012	12-05689
Dutchess	RHINEBECK TOWN	BAT, Big Brown	8/7/2012	12-04120
Erie	ALDEN TOWN	RACCOON	7/6/2012	12-02460
Erie	ALDEN TOWN	RACCOON	9/19/2012	12-05631
Erie	AURORA TOWN	BAT, Big Brown	8/14/2012	12-04666
Erie	AURORA TOWN	BAT, Big Brown	9/11/2012	12-05533
Erie	AURORA TOWN	RACCOON	6/5/2012	12-01875
Erie	AURORA TOWN	RACCOON	5/31/2012	12-01716
Erie	BOSTON TOWN	RACCOON	7/11/2012	12-02620
Erie	BUFFALO CITY	BAT, Big Brown	12/18/2012	12-06577

County	Locality	Animal	Date	Lab#
Erie	BUFFALO CITY	BAT, Big Brown	9/4/2012	12-05440
Erie	BUFFALO CITY	BAT, Big Brown	8/6/2012	12-03886
Erie	BUFFALO CITY	BAT, Big Brown	8/21/2012	12-05041
Erie	BUFFALO CITY	BAT, Big Brown	7/31/2012	12-03488
Erie	BUFFALO CITY	BAT, Big Brown	8/14/2012	12-04668
Erie	BUFFALO CITY	BAT, Big Brown	7/25/2012	12-03069
Erie	CLARENCE TOWN	BAT, Big Brown	1/10/2012	12-00066
Erie	COLDEN TOWN	DEER	3/14/2012	12-00625
Erie	COLDEN TOWN	RACCOON	7/11/2012	12-02621
Erie	COLDEN TOWN	RACCOON	5/4/2012	12-01119
Erie	COLLINS TOWN	RACCOON	5/7/2012	12-01133
Erie	COLLINS TOWN	SKUNK	9/4/2012	12-05438
Erie	CONCORD TOWN	FOX, Red	5/14/2012	12-01215
Erie	EDEN TOWN	SKUNK	11/16/2012	12-06289
Erie	EVANS TOWN	SKUNK	5/9/2012	12-01185
Erie	HAMBURG TOWN	BAT, Big Brown	5/31/2012	12-01706
Erie	HAMBURG TOWN	BAT, Big Brown	8/9/2012	12-04380
Erie	HAMBURG TOWN	RACCOON	5/30/2012	12-01673
Erie	HAMBURG TOWN	RACCOON	10/18/2012	12-05988
Erie	HAMBURG TOWN	RACCOON	12/14/2012	12-06548
Erie	HAMBURG TOWN	RACCOON	7/10/2012	12-02589
Erie	HAMBURG TOWN	SKUNK	9/24/2012	12-05692
Erie	LANCASTER TOWN	RACCOON	6/13/2012	12-01984
Erie	MARILLA TOWN	RACCOON	3/21/2012	12-00710
Erie	NEWSTEAD TOWN	BAT, Big Brown	6/5/2012	12-01877
Erie	ORCHARD PARK TOWN	BAT, Big Brown	9/11/2012	12-05548
Erie	ORCHARD PARK TOWN	SKUNK	9/26/2012	12-05714
Erie	SARDINIA TOWN	RACCOON	8/14/2012	12-04609
Erie	TONAWANDA CITY	BAT, Big Brown	8/15/2012	12-04761
Erie	TONAWANDA TOWN	BAT, Big Brown	8/3/2012	12-03785
Erie	TONAWANDA TOWN	BAT, Big Brown	8/16/2012	12-04855
Erie	TONAWANDA TOWN	BAT, Big Brown	7/31/2012	12-03485
Erie	WALES TOWN	RACCOON	3/14/2012	12-00622
Erie	WALES TOWN	RACCOON	12/12/2012	12-06531
Essex	CHESTERFIELD TOWN	RACCOON	8/1/2012	12-03635
Essex	CHESTERFIELD TOWN	RACCOON	8/10/2012	12-04397
Essex	CHESTERFIELD TOWN	RACCOON	8/27/2012	12-05257
Essex	ELIZABETHTOWN TOWN	RACCOON	8/10/2012	12-04403
Essex	ELIZABETHTOWN TOWN	RACCOON	5/10/2012	12-01201
Essex	ESSEX TOWN	SKUNK	4/16/2012	12-00928
Essex	JAY TOWN	RACCOON	10/5/2012	12-05826
Essex	JAY TOWN	RACCOON	10/11/2012	12-05881
Essex	JAY TOWN	RACCOON	10/16/2012	12-05962
Essex	JAY TOWN	RACCOON	7/26/2012	12-03124
Essex	JAY TOWN	SKUNK	9/28/2012	12-05770
Essex	KEENE TOWN	RACCOON	12/24/2012	12-06627
Essex	TICONDEROGA TOWN	RACCOON	10/4/2012	12-05816
Essex	TICONDEROGA TOWN	WOODCHUCK	6/26/2012	12-02237
Essex	WESTPORT TOWN	RACCOON	3/27/2012	12-00756
Essex	WILLSBORO TOWN	RACCOON	8/7/2012	12-03982
Essex	WILMINGTON TOWN	RACCOON	9/12/2012	12-05558
Essex	WILMINGTON TOWN	RACCOON	8/13/2012	12-04587

County	Locality	Animal	Date	Lab#
Essex	WILMINGTON TOWN	RACCOON	11/14/2012	12-06231
Fulton	EPHRATAH TOWN	RACCOON	1/31/2012	12-00232
Genesee	ALABAMA TOWN	SKUNK	10/12/2012	12-05896
Genesee	LE ROY TOWN	DEER	9/6/2012	12-05493
Genesee	LE ROY TOWN	RACCOON	8/6/2012	12-03900
Greene	CATSKILL TOWN	BAT, Big Brown	9/19/2012	12-05650
Herkimer	COLUMBIA TOWN	SKUNK	12/14/2012	12-06550
Herkimer	DANUBE TOWN	RACCOON	12/14/2012	12-06549
Herkimer	DANUBE TOWN	SKUNK	12/4/2012	12-06434
Herkimer	FAIRFIELD TOWN	RACCOON	12/3/2012	12-06421
Herkimer	FAIRFIELD TOWN	SKUNK	9/13/2012	12-05579
Herkimer	FRANKFORT TOWN	FOX, Gray	10/4/2012	12-05818
Herkimer	GERMAN FLATTS TOWN	SKUNK	1/20/2012	12-00149
Herkimer	MANHEIM TOWN	SKUNK	3/5/2012	12-00524
Herkimer	NEWPORT TOWN	BAT, Big Brown	9/13/2012	12-05578
Jefferson	ADAMS TOWN	RACCOON	10/16/2012	12-05935
Jefferson	ADAMS TOWN	RACCOON	6/20/2012	12-02128
Jefferson	ADAMS TOWN	RACCOON	11/20/2012	12-06308
Jefferson	ALEXANDRIA TOWN	RACCOON	8/23/2012	12-05179
Jefferson	ALEXANDRIA TOWN	RACCOON	8/21/2012	12-05120
Jefferson	BROWNVILLE TOWN	RACCOON	10/29/2012	12-06085
Jefferson	CHAMPION TOWN	BAT, Big Brown	7/26/2012	12-03153
Jefferson	LE RAY TOWN	BAT, Big Brown	7/6/2012	12-02475
Jefferson	LE RAY TOWN	RACCOON	6/29/2012	12-02331
Jefferson	RUTLAND TOWN	SKUNK	10/2/2012	12-05781
Jefferson	WATERTOWN CITY	CAT	7/3/2012	12-02390
Jefferson	WATERTOWN CITY	RACCOON	11/14/2012	12-06234
Jefferson	WATERTOWN CITY	SKUNK	9/6/2012	12-05485
Jefferson	WORTH TOWN	RACCOON	5/23/2012	12-01454
Lewis	DENMARK TOWN	RACCOON	4/10/2012	12-00879
Lewis	DENMARK TOWN	SKUNK	5/23/2012	12-01412
Lewis	MARTINSBURG TOWN	RACCOON	3/28/2012	12-00779
Lewis	NEW BREMEN TOWN	BAT, Big Brown	7/10/2012	12-02551
Lewis	TURIN TOWN	SKUNK	7/9/2012	12-02508
Livingston	AVON TOWN	RACCOON	7/11/2012	12-02605
Livingston	CALEDONIA TOWN	BAT, Big Brown	8/15/2012	12-04766
Livingston	CALEDONIA TOWN	RACCOON	11/1/2012	12-06117
Livingston	CONESUS TOWN	BAT, Big Brown	5/7/2012	12-01138
Livingston	NORTH DANSVILLE TOWN	BAT, Big Brown	12/11/2012	12-06514
Livingston	PORTAGE TOWN	RACCOON	9/18/2012	12-05618
Livingston	SPRINGWATER TOWN	RACCOON	2/16/2012	12-00371
Livingston	YORK TOWN	CAT	11/14/2012	12-06239
Madison	FENNER TOWN	CATTLE	8/31/2012	12-05429
Madison	HAMILTON TOWN	FOX, Gray	1/10/2012	12-00052
Madison	HAMILTON TOWN	RACCOON	12/11/2012	12-06510
Madison	LENOX TOWN	BAT, Big Brown	5/22/2012	12-01353
Madison	SMITHFIELD TOWN	GOAT	10/30/2012	12-06087
Madison	STOCKBRIDGE TOWN	RACCOON	3/22/2012	12-00719
Madison	STOCKBRIDGE TOWN	RACCOON	7/14/2012	12-02678
Madison	SULLIVAN TOWN	FOX, Gray	1/31/2012	12-00235
Monroe	BRIGHTON TOWN	BAT, Big Brown	8/7/2012	12-03965
Monroe	BRIGHTON TOWN	RACCOON	3/21/2012	12-00705

County	Locality	Animal	Date	Lab#
Monroe	CLARKSON TOWN	DEER	8/13/2012	12-04541
Monroe	PENFIELD TOWN	RACCOON	11/8/2012	12-06189
Monroe	ROCHESTER CITY	BAT, Big Brown	5/15/2012	12-01234
Monroe	WEBSTER TOWN	FOX, Gray	7/17/2012	12-02712
Nassau	HEMPSTEAD TOWN	BAT, Red	9/10/2012	12-05528
Niagara	HARTLAND TOWN	SKUNK	10/5/2012	12-05828
Niagara	LOCKPORT TOWN	RACCOON	9/11/2012	12-05537
Niagara	ROYALTON TOWN	CAT	7/6/2012	12-02492
Niagara	SOMERSET TOWN	BAT, Big Brown	7/27/2012	12-03251
Niagara	SOMERSET TOWN	RACCOON	4/20/2012	12-00998
Niagara	TUSCARORA INDIAN	RACCOON	4/26/2012	12-01057
Niagara	WILSON TOWN	RACCOON	6/21/2012	12-02161
Oneida	AUGUSTA TOWN	FOX, Gray	5/22/2012	12-01356
Oneida	AUGUSTA TOWN	RACCOON	2/29/2012	12-00484
Oneida	CAMDEN TOWN	RACCOON	2/8/2012	12-00308
Oneida	UTICA CITY	BAT, Big Brown	4/3/2012	12-00830
Oneida	VERNON TOWN	SKUNK	8/21/2012	12-05056
Oneida	VIENNA TOWN	RACCOON	4/20/2012	12-00999
Oneida	WHITESTOWN TOWN	FOX, Gray	7/16/2012	12-02685
Onondaga	CLAY TOWN	CAT	1/24/2012	12-00163
Onondaga	FABIUS TOWN	RACCOON	7/6/2012	12-02469
Onondaga	LYSANDER TOWN	RACCOON	9/18/2012	12-05616
Onondaga	MANLIUS TOWN	FOX, Red	8/2/2012	12-03638
Onondaga	MANLIUS TOWN	RACCOON	4/18/2012	12-00971
Onondaga	MANLIUS TOWN	RACCOON	7/24/2012	12-03016
Onondaga	MARCELLUS TOWN	RACCOON	7/11/2012	12-02603
Onondaga	ONONDAGA TOWN	RACCOON	6/12/2012	12-01958
Onondaga	OTISCO TOWN	SKUNK	9/11/2012	12-05543
Onondaga	SKANEATELES TOWN	BAT, Big Brown	5/22/2012	12-01379
Onondaga	SPAFFORD TOWN	RACCOON	7/10/2012	12-02563
Onondaga	SYRACUSE CITY	BAT, Big Brown	7/31/2012	12-03445
Ontario	EAST BLOOMFIELD TOWN	RACCOON	4/5/2012	12-00851
Ontario	GENEVA CITY	BAT, Big Brown	7/23/2012	12-02940
Ontario	RICHMOND TOWN	BAT, Big Brown	10/12/2012	12-05894
Ontario	SOUTH BRISTOL TOWN	RACCOON	9/26/2012	12-05716
Ontario	VICTOR TOWN	RACCOON	12/28/2012	12-06640
Ontario	VICTOR TOWN	RACCOON	1/25/2012	12-00178
Orange	BLOOMING GROVE TOWN	BAT, Big Brown	8/7/2012	12-04023
Orange	BLOOMING GROVE TOWN	CAT	11/27/2012	12-06377
Orange	BLOOMING GROVE TOWN	RACCOON	6/15/2012	12-02048
Orange	BLOOMING GROVE TOWN	RACCOON	7/17/2012	12-02750
Orange	CORNWALL TOWN	BAT, Big Brown	7/3/2012	12-02406
Orange	GOSHEN TOWN	BAT, Big Brown	3/9/2012	12-00579
Orange	GOSHEN TOWN	BAT, Big Brown	5/30/2012	12-01644
Orange	HAMPTONBURG TOWN	RACCOON	5/8/2012	12-01162
Orange	HIGHLANDS TOWN	CAT	7/10/2012	12-02572
Orange	HIGHLANDS TOWN	FOX, Red	12/6/2012	12-06477
Orange	WALLKILL TOWN	BAT, Big Brown	7/10/2012	12-02576
Orange	WARWICK TOWN	SKUNK	8/9/2012	12-04321
Orange	WAWAYANDA TOWN	BAT, Big Brown	9/19/2012	12-05649
Orange	WOODBURY TOWN	WOODCHUCK	7/14/2012	12-02681
Orleans	ALBION TOWN	RACCOON	4/27/2012	12-01065

County	Locality	Animal	Date	Lab#
Orleans	ALBION TOWN	RACCOON	4/17/2012	12-00941
Orleans	ALBION TOWN	RACCOON	5/15/2012	12-01230
Orleans	ALBION TOWN	RACCOON	6/28/2012	12-02321
Orleans	BARRE TOWN	RACCOON	7/11/2012	12-02604
Orleans	CARLTON TOWN	BAT, Big Brown	9/5/2012	12-05471
Orleans	GAINES TOWN	BAT, Big Brown	8/24/2012	12-05230
Orleans	MURRAY TOWN	BAT, Big Brown	5/17/2012	12-01300
Orleans	YATES TOWN	HORSE	5/31/2012	12-01733
Orleans	YATES TOWN	WOODCHUCK	7/3/2012	12-02398
Oswego	CONSTANTIA TOWN	RACCOON	1/13/2012	12-00093
Oswego	GRANBY TOWN	FOX, Gray	9/14/2012	12-05600
Oswego	HANNIBAL TOWN	BAT, Big Brown	6/28/2012	12-02316
Oswego	OSWEGO CITY	BAT, Big Brown	8/10/2012	12-04394
Oswego	PALERMO TOWN	RACCOON	7/9/2012	12-02509
Oswego	RICHLAND TOWN	BAT, Big Brown	9/11/2012	12-05551
Oswego	RICHLAND TOWN	BAT, Big Brown	8/17/2012	12-04916
Oswego	RICHLAND TOWN	CAT	10/4/2012	12-05814
Oswego	SCRIBA TOWN	RACCOON	3/6/2012	12-00546
Oswego	VOLNEY TOWN	RACCOON	4/18/2012	12-00985
Oswego	VOLNEY TOWN	SKUNK	8/22/2012	12-05131
Otsego	MIDDLEFIELD TOWN	RACCOON	4/21/2012	12-01004
Otsego	MIDDLEFIELD TOWN	SKUNK	11/2/2012	12-06144
Otsego	MILFORD TOWN	CAT	3/6/2012	12-00538
Otsego	ONEONTA TOWN	RACCOON	2/9/2012	12-00317
Otsego	PLAINFIELD TOWN	RACCOON	3/20/2012	12-00670
Otsego	ROSEBOOM TOWN	SKUNK	4/25/2012	12-01050
Otsego	UNADILLA TOWN	CAT	7/11/2012	12-02600
Out-Of-State	OUT-OF-STATE	BEAVER	8/3/2012	12-03858
Putnam	CARMEL TOWN	BAT, Big Brown	5/15/2012	12-01227
Putnam	CARMEL TOWN	BAT, Big Brown	8/3/2012	12-03804
Putnam	CARMEL TOWN	CAT	5/5/2012	12-01132
Putnam	CARMEL TOWN	RACCOON	2/22/2012	12-00411
Putnam	PUTNAM VALLEY TOWN	RACCOON	6/5/2012	12-01840
Putnam	SOUTHEAST TOWN	BAT, Big Brown	9/5/2012	12-05470
Putnam	SOUTHEAST TOWN	SKUNK	9/24/2012	12-05691
Rensselaer	NORTH GREENBUSH TOWN	RACCOON	5/17/2012	12-01302
Rensselaer	RENSSELAER CITY	FOX, Gray	8/13/2012	12-04593
Rockland	CLARKSTOWN TOWN	BAT, Big Brown	8/13/2012	12-04580
Rockland	CLARKSTOWN TOWN	BAT, Big Brown	3/1/2012	12-00499
Rockland	CLARKSTOWN TOWN	BAT, Big Brown	8/27/2012	12-05264
Rockland	HAYERSTRAW TOWN	RACCOON	9/17/2012	12-05605
Rockland	ORANGETOWN TOWN	RACCOON	3/16/2012	12-00650
Saratoga	CLIFTON PARK TOWN	BAT, Big Brown	8/15/2012	12-04838
Saratoga	CLIFTON PARK TOWN	SKUNK	8/16/2012	12-04908
Saratoga	CORINTH TOWN	FOX, Gray	7/18/2012	12-02786
Saratoga	GALWAY TOWN	SKUNK	11/27/2012	12-06365
Saratoga	NORTHUMBERLAND TOWN	BAT, Big Brown	9/13/2012	12-05581
Saratoga	WILTON TOWN	SKUNK	11/6/2012	12-06166
Schenectady	GLENVILLE TOWN	BAT, Big Brown	5/30/2012	12-01667
Schenectady	GLENVILLE TOWN	BAT, Big Brown	6/28/2012	12-02307
Schenectady	NISKAYUNA TOWN	BAT, Big Brown	7/31/2012	12-03324
Schoharie	CARLISLE TOWN	RACCOON	2/28/2012	12-00481

County	Locality	Animal	Date	Lab#
Schoharie	MIDDLEBURGH TOWN	RACCOON	7/5/2012	12-02442
Schoharie	RICHMONDVILLE TOWN	BAT, Big Brown	7/18/2012	12-02770
Schoharie	RICHMONDVILLE TOWN	SKUNK	10/16/2012	12-05931
Schoharie	SCHOHARIE TOWN	RACCOON	5/15/2012	12-01225
Schoharie	SHARON TOWN	RACCOON	6/8/2012	12-01918
Schuyler	DIX TOWN	BAT, Big Brown	8/1/2012	12-03609
Schuyler	DIX TOWN	OTTER	11/26/2012	12-06356
Schuyler	HECTOR TOWN	RACCOON	1/31/2012	12-00233
Schuyler	HECTOR TOWN	RACCOON	1/4/2012	12-00014
Schuyler	HECTOR TOWN	RACCOON	4/5/2012	12-00853
Schuyler	HECTOR TOWN	RACCOON	3/27/2012	12-00758
Schuyler	HECTOR TOWN	RACCOON	4/24/2012	12-01019
Schuyler	HECTOR TOWN	RACCOON	7/6/2012	12-02468
St. Lawrence	CANTON TOWN	RACCOON	6/29/2012	12-02332
St. Lawrence	CANTON TOWN	RACCOON	11/15/2012	12-06259
St. Lawrence	GOUVERNEUR TOWN	RACCOON	8/29/2012	12-05352
St. Lawrence	OSWEGATCHIE TOWN	RACCOON	6/13/2012	12-01991
St. Lawrence	POTSDAM TOWN	RACCOON	8/28/2012	12-05288
St. Lawrence	STOCKHOLM TOWN	BAT, Big Brown	7/18/2012	12-02766
Steuben	ADDISON TOWN	RACCOON	6/14/2012	12-02021
Steuben	BATH TOWN	FOX, Gray	6/5/2012	12-01849
Steuben	BATH TOWN	RACCOON	11/1/2012	12-06116
Steuben	CAMERON TOWN	CATTLE	5/2/2012	12-01100
Steuben	CANISTEO TOWN	RACCOON	5/25/2012	12-01513
Steuben	CORNING CITY	CAT	9/6/2012	12-05488
Steuben	HORNELLSVILLE TOWN	BAT, Big Brown	8/23/2012	12-05211
Steuben	HORNELLSVILLE TOWN	CAT	7/3/2012	12-02429
Steuben	LINDLEY TOWN	CAT	10/15/2012	12-05916
Suffolk	ISLIP TOWN	BAT, Red	9/19/2012	12-05646
Sullivan	HIGHLAND TOWN	FOX, Gray	9/6/2012	12-05484
Sullivan	ROCKLAND TOWN	RACCOON	1/14/2012	12-00105
Tioga	BERKSHIRE TOWN	RACCOON	8/6/2012	12-03870
Tioga	BERKSHIRE TOWN	RACCOON	4/12/2012	12-00911
Tioga	CANDOR TOWN	CAT	12/7/2012	12-06486
Tioga	CANDOR TOWN	RACCOON	8/13/2012	12-04504
Tioga	CANDOR TOWN	RACCOON	5/16/2012	12-01263
Tioga	CANDOR TOWN	RACCOON	7/6/2012	12-02465
Tioga	OWEGO TOWN	FOX, Gray	4/6/2012	12-00867
Tioga	OWEGO TOWN	WOODCHUCK	7/13/2012	12-02663
Tioga	RICHFORD TOWN	RACCOON	2/27/2012	12-00453
Tioga	SPENCER TOWN	FOX, Gray	5/31/2012	12-01720
Tompkins	DRYDEN TOWN	BAT, Big Brown	8/7/2012	12-04093
Tompkins	DRYDEN TOWN	MINK	5/8/2012	12-01155
Tompkins	DRYDEN TOWN	WOODCHUCK	7/31/2012	12-03426
Tompkins	ENFIELD TOWN	RACCOON	7/23/2012	12-02911
Tompkins	GROTON TOWN	BAT, Big Brown	9/1/2012	12-05435
Tompkins	GROTON TOWN	RACCOON	5/24/2012	12-01477
Tompkins	ITHACA CITY	BAT, Big Brown	9/19/2012	12-05648
Tompkins	ITHACA CITY	BAT, Hoary	8/15/2012	12-04836
Tompkins	ITHACA TOWN	BAT, Hoary	9/1/2012	12-05434
Tompkins	ITHACA TOWN	FOX, Red	4/25/2012	12-01043
Tompkins	ITHACA TOWN	FOX, Red	5/15/2012	12-01240

County	Locality	Animal	Date	Lab#
Tompkins	LANSING TOWN	DEER	8/29/2012	12-05372
Tompkins	NEWFIELD TOWN	RACCOON	10/17/2012	12-05974
Ulster	NEW PALTZ TOWN	RACCOON	8/29/2012	12-05369
Ulster	ROSENDALE TOWN	BAT, Big Brown	10/4/2012	12-05811
Ulster	SAUGERTIES TOWN	SKUNK	2/3/2012	12-00276
Ulster	SAUGERTIES TOWN	SKUNK	12/7/2012	12-06482
Ulster	ULSTER TOWN	CAT	3/3/2012	12-00520
Ulster	ULSTER TOWN	SKUNK	1/11/2012	12-00071
Ulster	WAWARSING TOWN	SKUNK	10/18/2012	12-05992
Ulster	WOODSTOCK TOWN	RACCOON	8/21/2012	12-05061
Warren	JOHNSBURG TOWN	BAT, Big Brown	7/24/2012	12-03031
Warren	WARRENSBURG TOWN	CAT	1/31/2012	12-00243
Washington	EASTON TOWN	BAT, Big Brown	8/2/2012	12-03646
Washington	FORT ANN TOWN	CATTLE	3/14/2012	12-00628
Washington	FORT ANN TOWN	SKUNK	10/4/2012	12-05817
Washington	FORT ANN TOWN	SKUNK	5/16/2012	12-01262
Washington	HARTFORD TOWN	WOODCHUCK	7/3/2012	12-02404
Washington	KINGSBURY TOWN	BAT, Big Brown	7/31/2012	12-03387
Washington	KINGSBURY TOWN	WOODCHUCK	5/5/2012	12-01131
Washington	SALEM TOWN	BAT, Big Brown	7/19/2012	12-02816
Wayne	ARCADIA TOWN	BAT, Big Brown	7/26/2012	12-03143
Wayne	BUTLER TOWN	SKUNK	8/14/2012	12-04651
Wayne	LYONS TOWN	BAT, Big Brown	5/9/2012	12-01172
Wayne	ONTARIO TOWN	RACCOON	8/27/2012	12-05252
Wayne	ROSE TOWN	RACCOON	3/9/2012	12-00573
Wayne	ROSE TOWN	RACCOON	3/8/2012	12-00561
Wayne	WALWORTH TOWN	RACCOON	8/10/2012	12-04404
Westchester	BEDFORD TOWN	BAT, Big Brown	6/6/2012	12-01894
Westchester	BEDFORD TOWN	RACCOON	8/3/2012	12-03774
Westchester	CORTLANDT TOWN	BAT, Big Brown	10/3/2012	12-05808
Westchester	CORTLANDT TOWN	BAT, Small Brown	7/17/2012	12-02748
Westchester	GREENBURGH TOWN	BAT, Big Brown	10/13/2012	12-05912
Westchester	GREENBURGH TOWN	CAT	7/30/2012	12-03273
Westchester	GREENBURGH TOWN	RACCOON	6/5/2012	12-01850
Westchester	LEWISBORO TOWN	RACCOON	7/27/2012	12-03208
Westchester	MOUNT KISCO TOWN/VILLAGE	BAT, Big Brown	8/6/2012	12-03932
Westchester	MOUNT KISCO TOWN/VILLAGE	CAT	6/27/2012	12-02293
Westchester	MOUNT KISCO TOWN/VILLAGE	RACCOON	4/19/2012	12-00989
Westchester	MOUNT KISCO TOWN/VILLAGE	RACCOON	1/18/2012	12-00127
Westchester	MOUNT PLEASANT TOWN	BAT, Big Brown	6/26/2012	12-02245
Westchester	MOUNT PLEASANT TOWN	BAT, Small Brown	8/6/2012	12-03918
Westchester	MOUNT VERNON CITY	SKUNK	3/20/2012	12-00680
Westchester	MOUNT VERNON CITY	SKUNK	4/16/2012	12-00929
Westchester	NEW ROCHELLE CITY	CAT	7/10/2012	12-02564
Westchester	NORTH CASTLE TOWN	RACCOON	3/9/2012	12-00578
Westchester	NORTH CASTLE TOWN	SKUNK	3/20/2012	12-00677
Westchester	PEEKSKILL CITY	SKUNK	3/27/2012	12-00767
Westchester	POUND RIDGE TOWN	SKUNK	4/3/2012	12-00831
Westchester	RYE CITY	BAT, Red	8/15/2012	12-04801
Westchester	RYE TOWN	BAT, Big Brown	10/18/2012	12-06001
Westchester	SCARSDALE TOWN/VILLAGE	RACCOON	11/27/2012	12-06375
Westchester	SOMERS TOWN	BAT, Big Brown	4/17/2012	12-00955

County	Locality	Animal	Date	Lab#
Westchester	SOMERS TOWN	BAT, Big Brown	7/18/2012	12-02797
Westchester	SOMERS TOWN	RACCOON	9/4/2012	12-05437
Westchester	WHITE PLAINS CITY	SKUNK	6/8/2012	12-01924
Westchester	YORKTOWN TOWN	RACCOON	3/14/2012	12-00633
Wyoming	ARCADE TOWN	RACCOON	11/30/2012	12-06413
Wyoming	JAVA TOWN	CAT	11/30/2012	12-06419
Wyoming	MIDDLEBURY TOWN	RACCOON	1/11/2012	12-00070
Wyoming	SHELDON TOWN	RACCOON	6/5/2012	12-01853
Yates	BARRINGTON TOWN	BAT, Big Brown	9/20/2012	12-05661
Yates	ITALY TOWN	RACCOON	5/18/2012	12-01309
Yates	JERUSALEM TOWN	RACCOON	9/5/2012	12-05462
Yates	TORREY TOWN	BAT, Big Brown	8/14/2012	12-04714

List of Positives

Between 01/01/2012 and 12/31/2012

ACC ID	Date	Species	County	Location
12-00014	1/4/2012	RACCOON	Schuyler	HECTOR TOWN
12-00052	1/10/2012	FOX, Gray	Madison	HAMILTON TOWN
12-00066	1/10/2012	BAT, Big Brown	Erie	CLARENCE TOWN
12-00070	1/11/2012	RACCOON	Wyoming	MIDDLEBURY TOWN
12-00071	1/11/2012	SKUNK	Ulster	ULSTER TOWN
12-00093	1/13/2012	RACCOON	Oswego	CONSTANTIA TOWN
12-00105	1/14/2012	RACCOON	Sullivan	ROCKLAND TOWN
12-00127	1/18/2012	RACCOON	Westchester	MOUNT KISCO TOWN/VILLAGE
12-00149	1/20/2012	SKUNK	Herkimer	GERMAN FLATTS TOWN
12-00163	1/24/2012	CAT	Onondaga	CLAY TOWN
12-00178	1/25/2012	RACCOON	Ontario	VICTOR TOWN
12-00232	1/31/2012	RACCOON	Fulton	EPHRATAH TOWN
12-00233	1/31/2012	RACCOON	Schuyler	HECTOR TOWN
12-00234	1/31/2012	FOX, Gray	Chemung	BALDWIN TOWN
12-00235	1/31/2012	FOX, Gray	Madison	SULLIVAN TOWN
12-00243	1/31/2012	CAT	Warren	WARRENSBURG TOWN
12-00257	2/2/2012	RACCOON	Cayuga	SUMMERHILL TOWN
12-00276	2/3/2012	SKUNK	Ulster	SAUGERTIES TOWN
12-00302	2/7/2012	RACCOON	Albany	NEW SCOTLAND TOWN
12-00305	2/7/2012	CATTLE	Cattaraugus	SARDINIA TOWN
12-00308	2/8/2012	RACCOON	Oneida	CAMDEN TOWN
12-00317	2/9/2012	RACCOON	Otsego	ONEONTA TOWN
12-00371	2/16/2012	RACCOON	Livingston	SPRINGWATER TOWN
12-00409	2/21/2012	RACCOON	Albany	NEW SCOTLAND TOWN
12-00411	2/22/2012	RACCOON	Putnam	CARMEL TOWN
12-00445	2/24/2012	RACCOON	Chenango	COVENTRY TOWN
12-00453	2/27/2012	RACCOON	Tioga	RICHFORD TOWN
12-00460	2/27/2012	RACCOON	Albany	RENSSELAERVILLE TOWN
12-00464	2/28/2012	FOX, Gray	Broome	UNION TOWN
12-00481	2/28/2012	RACCOON	Schoharie	CARLISLE TOWN
12-00484	2/29/2012	RACCOON	Oneida	AUGUSTA TOWN
12-00499	3/1/2012	BAT, Big Brown	Rockland	CLARKSTOWN TOWN
12-00520	3/3/2012	CAT	Ulster	ULSTER TOWN
12-00524	3/5/2012	SKUNK	Herkimer	MANHEIM TOWN
12-00538	3/6/2012	CAT	Otsego	MILFORD TOWN
12-00546	3/6/2012	RACCOON	Oswego	SCRIBA TOWN
12-00561	3/8/2012	RACCOON	Wayne	ROSE TOWN
12-00573	3/9/2012	RACCOON	Wayne	ROSE TOWN
12-00578	3/9/2012	RACCOON	Westchester	NORTH CASTLE TOWN
12-00579	3/9/2012	BAT, Big Brown	Orange	GOSHEN TOWN
12-00622	3/14/2012	RACCOON	Erie	WALES TOWN
12-00625	3/14/2012	DEER	Erie	COLDEN TOWN
12-00628	3/14/2012	CATTLE	Washington	FORT ANN TOWN
12-00633	3/14/2012	RACCOON	Westchester	YORKTOWN TOWN
12-00650	3/16/2012	RACCOON	Rockland	ORANGETOWN TOWN
12-00658	3/16/2012	SKUNK	Columbia	GALLATIN TOWN
12-00659	3/17/2012	CAT	Columbia	KINDERHOOK TOWN
12-00666	3/19/2012	BAT, Big Brown	Albany	ALBANY CITY
12-00670	3/20/2012	RACCOON	Otsego	PLAINFIELD TOWN

ACC ID	Date	Species	County	Location
12-00677	3/20/2012	SKUNK	Westchester	NORTH CASTLE TOWN
12-00680	3/20/2012	SKUNK	Westchester	MOUNT VERNON CITY
12-00697	3/21/2012	RACCOON	Chenango	SHERBURNE TOWN
12-00705	3/21/2012	RACCOON	Monroe	BRIGHTON TOWN
12-00710	3/21/2012	RACCOON	Erie	MARILLA TOWN
12-00717	3/22/2012	RACCOON	Chemung	VAN ETTEN TOWN
12-00719	3/22/2012	RACCOON	Madison	STOCKBRIDGE TOWN
12-00756	3/27/2012	RACCOON	Essex	WESTPORT TOWN
12-00758	3/27/2012	RACCOON	Schuyler	HECTOR TOWN
12-00767	3/27/2012	SKUNK	Westchester	PEEKSKILL CITY
12-00779	3/28/2012	RACCOON	Lewis	MARTINSBURG TOWN
12-00830	4/3/2012	BAT, Big Brown	Oneida	UTICA CITY
12-00831	4/3/2012	SKUNK	Westchester	POUND RIDGE TOWN
12-00851	4/5/2012	RACCOON	Ontario	EAST BLOOMFIELD TOWN
12-00853	4/5/2012	RACCOON	Schuyler	HECTOR TOWN
12-00867	4/6/2012	FOX, Gray	Tioga	OWEGO TOWN
12-00879	4/10/2012	RACCOON	Lewis	DENMARK TOWN
12-00911	4/12/2012	RACCOON	Tioga	BERKSHIRE TOWN
12-00928	4/16/2012	SKUNK	Essex	ESSEX TOWN
12-00929	4/16/2012	SKUNK	Westchester	MOUNT VERNON CITY
12-00940	4/17/2012	RACCOON	Chenango	SHERBURNE TOWN
12-00941	4/17/2012	RACCOON	Orleans	ALBION TOWN
12-00955	4/17/2012	BAT, Big Brown	Westchester	SOMERS TOWN
12-00971	4/18/2012	RACCOON	Onondaga	MANLIUS TOWN
12-00985	4/18/2012	RACCOON	Oswego	VOLNEY TOWN
12-00989	4/19/2012	RACCOON	Westchester	MOUNT KISCO TOWN/VILLAGE
12-00998	4/20/2012	RACCOON	Niagara	SOMERSET TOWN
12-00999	4/20/2012	RACCOON	Oneida	VIENNA TOWN
12-01004	4/21/2012	RACCOON	Otsego	MIDDLEFIELD TOWN
12-01019	4/24/2012	RACCOON	Schuyler	HECTOR TOWN
12-01043	4/25/2012	FOX, Red	Tompkins	ITHACA TOWN
12-01050	4/25/2012	SKUNK	Otsego	ROSEBOOM TOWN
12-01052	4/26/2012	RACCOON	Cayuga	BRUTUS TOWN
12-01055	4/26/2012	RACCOON	Chemung	HORSEHEADS TOWN
12-01057	4/26/2012	RACCOON	Niagara	TUSCARORA INDIAN
12-01065	4/27/2012	RACCOON	Orleans	ALBION TOWN
12-01100	5/2/2012	CATTLE	Steuben	CAMERON TOWN
12-01119	5/4/2012	RACCOON	Erie	COLDEN TOWN
12-01131	5/5/2012	WOODCHUCK	Washington	KINGSBURY TOWN
12-01132	5/5/2012	CAT	Putnam	CARMEL TOWN
12-01133	5/7/2012	RACCOON	Erie	COLLINS TOWN
12-01138	5/7/2012	BAT, Big Brown	Livingston	CONESUS TOWN
12-01141	5/7/2012	BAT, Big Brown	Albany	GUILDERLAND TOWN
12-01155	5/8/2012	MINK	Tompkins	DRYDEN TOWN
12-01157	5/8/2012	RACCOON	Cayuga	MONTEZUMA TOWN
12-01162	5/8/2012	RACCOON	Orange	HAMPTONBURG TOWN
12-01172	5/9/2012	BAT, Big Brown	Wayne	LYONS TOWN
12-01173	5/9/2012	RACCOON	Cayuga	BRUTUS TOWN
12-01174	5/9/2012	RACCOON	Chenango	OXFORD TOWN
12-01182	5/9/2012	BAT, Big Brown	Columbia	GERMANTOWN TOWN
12-01185	5/9/2012	SKUNK	Erie	EVANS TOWN
12-01201	5/10/2012	RACCOON	Essex	ELIZABETHTOWN TOWN
12-01215	5/14/2012	FOX, Red	Erie	CONCORD TOWN

ACC ID	Date	Species	County	Location
12-01225	5/15/2012	RACCOON	Schoharie	SCHOHARIE TOWN
12-01227	5/15/2012	BAT, Big Brown	Putnam	CARMEL TOWN
12-01230	5/15/2012	RACCOON	Orleans	ALBION TOWN
12-01234	5/15/2012	BAT, Big Brown	Monroe	ROCHESTER CITY
12-01240	5/15/2012	FOX, Red	Tompkins	ITHACA TOWN
12-01262	5/16/2012	SKUNK	Washington	FORT ANN TOWN
12-01263	5/16/2012	RACCOON	Tioga	CANDOR TOWN
12-01300	5/17/2012	BAT, Big Brown	Orleans	MURRAY TOWN
12-01302	5/17/2012	RACCOON	Rensselaer	NORTH GREENBUSH TOWN
12-01309	5/18/2012	RACCOON	Yates	ITALY TOWN
12-01353	5/22/2012	BAT, Big Brown	Madison	LENOX TOWN
12-01356	5/22/2012	FOX, Gray	Oneida	AUGUSTA TOWN
12-01379	5/22/2012	BAT, Big Brown	Onondaga	SKANEATELES TOWN
12-01412	5/23/2012	SKUNK	Lewis	DENMARK TOWN
12-01454	5/23/2012	RACCOON	Jefferson	WORTH TOWN
12-01477	5/24/2012	RACCOON	Tompkins	GROTON TOWN
12-01513	5/25/2012	RACCOON	Steuben	CANISTEO TOWN
12-01590	5/30/2012	BAT, Big Brown	Chautauqua	ELLERY TOWN
12-01644	5/30/2012	BAT, Big Brown	Orange	GOSHEN TOWN
12-01667	5/30/2012	BAT, Big Brown	Schenectady	GLENNVILLE TOWN
12-01673	5/30/2012	RACCOON	Erie	HAMBURG TOWN
12-01706	5/31/2012	BAT, Big Brown	Erie	HAMBURG TOWN
12-01716	5/31/2012	RACCOON	Erie	AURORA TOWN
12-01720	5/31/2012	FOX, Gray	Tioga	SPENCER TOWN
12-01733	5/31/2012	HORSE	Orleans	YATES TOWN
12-01840	6/5/2012	RACCOON	Putnam	PUTNAM VALLEY TOWN
12-01847	6/5/2012	FOX, Gray	Allegany	FRIENDSHIP TOWN
12-01849	6/5/2012	FOX, Gray	Steuben	BATH TOWN
12-01850	6/5/2012	RACCOON	Westchester	GREENBURGH TOWN
12-01853	6/5/2012	RACCOON	Wyoming	SHELDON TOWN
12-01875	6/5/2012	RACCOON	Erie	AURORA TOWN
12-01877	6/5/2012	BAT, Big Brown	Erie	NEWSTEAD TOWN
12-01890	6/6/2012	RACCOON	Cayuga	CONQUEST TOWN
12-01894	6/6/2012	BAT, Big Brown	Westchester	BEDFORD TOWN
12-01905	6/7/2012	RACCOON	Cortland	WILLET TOWN
12-01918	6/8/2012	RACCOON	Schoharie	SHARON TOWN
12-01924	6/8/2012	SKUNK	Westchester	WHITE PLAINS CITY
12-01958	6/12/2012	RACCOON	Onondaga	ONONDAGA TOWN
12-01960	6/12/2012	RACCOON	Cayuga	AURELIUS TOWN
12-01963	6/12/2012	RACCOON	Cayuga	SCIPIO TOWN
12-01984	6/13/2012	RACCOON	Erie	LANCASTER TOWN
12-01991	6/13/2012	RACCOON	St. Lawrence	OSWEGATCHIE TOWN
12-02009	6/13/2012	BAT, Big Brown	Columbia	NEW LEBANON TOWN
12-02021	6/14/2012	RACCOON	Steuben	ADDISON TOWN
12-02040	6/15/2012	RACCOON	Columbia	CHATHAM TOWN
12-02043	6/15/2012	BAT, Big Brown	Chemung	BIG FLATS TOWN
12-02048	6/15/2012	RACCOON	Orange	BLOOMING GROVE TOWN
12-02061	6/15/2012	FOX, Red	Albany	BETHLEHEM TOWN
12-02128	6/20/2012	RACCOON	Jefferson	ADAMS TOWN
12-02130	6/20/2012	FOX, Red	Cayuga	CATO TOWN
12-02131	6/20/2012	RACCOON	Chautauqua	ARKWRIGHT TOWN
12-02153	6/21/2012	RACCOON	Delaware	SIDNEY TOWN
12-02161	6/21/2012	RACCOON	Niagara	WILSON TOWN

ACC ID	Date	Species	County	Location
12-02234	6/26/2012	RACCOON	Cattaraugus	CARROLLTON TOWN
12-02237	6/26/2012	WOODCHUCK	Essex	TICONDEROGA TOWN
12-02245	6/26/2012	BAT, Big Brown	Westchester	MOUNT PLEASANT TOWN
12-02270	6/26/2012	BAT, Big Brown	Albany	ALBANY CITY
12-02293	6/27/2012	CAT	Westchester	MOUNT KISCO TOWN/VILLAGE
12-02307	6/28/2012	BAT, Big Brown	Schenectady	GLENVILLE TOWN
12-02316	6/28/2012	BAT, Big Brown	Oswego	HANNIBAL TOWN
12-02321	6/28/2012	RACCOON	Orleans	ALBION TOWN
12-02331	6/29/2012	RACCOON	Jefferson	LE RAY TOWN
12-02332	6/29/2012	RACCOON	St. Lawrence	CANTON TOWN
12-02372	7/2/2012	RACCOON	Allegany	HUME TOWN
12-02390	7/3/2012	CAT	Jefferson	WATERTOWN CITY
12-02398	7/3/2012	WOODCHUCK	Orleans	YATES TOWN
12-02402	7/3/2012	RACCOON	Allegany	GENESEE TOWN
12-02403	7/3/2012	SKUNK	Broome	BARKER TOWN
12-02404	7/3/2012	WOODCHUCK	Washington	HARTFORD TOWN
12-02406	7/3/2012	BAT, Big Brown	Orange	CORNWALL TOWN
12-02429	7/3/2012	CAT	Steuben	HORNELLSVILLE TOWN
12-02442	7/5/2012	RACCOON	Schoharie	MIDDLEBURGH TOWN
12-02460	7/6/2012	RACCOON	Erie	ALDEN TOWN
12-02465	7/6/2012	RACCOON	Tioga	CANDOR TOWN
12-02468	7/6/2012	RACCOON	Schuyler	HECTOR TOWN
12-02469	7/6/2012	RACCOON	Onondaga	FABIUS TOWN
12-02475	7/6/2012	BAT, Big Brown	Jefferson	LE RAY TOWN
12-02492	7/6/2012	CAT	Niagara	ROYALTON TOWN
12-02508	7/9/2012	SKUNK	Lewis	TURIN TOWN
12-02509	7/9/2012	RACCOON	Oswego	PALERMO TOWN
12-02547	7/10/2012	BAT, Small Brown	Chautauqua	NORTH HARMONY TOWN
12-02551	7/10/2012	BAT, Big Brown	Lewis	NEW BREMEN TOWN
12-02563	7/10/2012	RACCOON	Onondaga	SPAFFORD TOWN
12-02564	7/10/2012	CAT	Westchester	NEW ROCHELLE CITY
12-02572	7/10/2012	CAT	Orange	HIGHLANDS TOWN
12-02576	7/10/2012	BAT, Big Brown	Orange	WALKKILL TOWN
12-02588	7/10/2012	FOX, Gray	Columbia	GHENT TOWN
12-02589	7/10/2012	RACCOON	Erie	HAMBURG TOWN
12-02600	7/11/2012	CAT	Otsego	UNADILLA TOWN
12-02603	7/11/2012	RACCOON	Onondaga	MARCELLUS TOWN
12-02604	7/11/2012	RACCOON	Orleans	BARRE TOWN
12-02605	7/11/2012	RACCOON	Livingston	AVON TOWN
12-02620	7/11/2012	RACCOON	Erie	BOSTON TOWN
12-02621	7/11/2012	RACCOON	Erie	COLDEN TOWN
12-02663	7/13/2012	WOODCHUCK	Tioga	OWEGO TOWN
12-02678	7/14/2012	RACCOON	Madison	STOCKBRIDGE TOWN
12-02681	7/14/2012	WOODCHUCK	Orange	WOODBURY TOWN
12-02682	7/16/2012	BAT, Big Brown	Allegany	ALMOND TOWN
12-02685	7/16/2012	FOX, Gray	Oneida	WHITESTOWN TOWN
12-02712	7/17/2012	FOX, Gray	Monroe	WEBSTER TOWN
12-02748	7/17/2012	BAT, Small Brown	Westchester	CORTLANDT TOWN
12-02750	7/17/2012	RACCOON	Orange	BLOOMING GROVE TOWN
12-02766	7/18/2012	BAT, Big Brown	St. Lawrence	STOCKHOLM TOWN
12-02770	7/18/2012	BAT, Big Brown	Schoharie	RICHMONDVILLE TOWN
12-02777	7/18/2012	BAT, Big Brown	Chemung	ASHLAND TOWN
12-02784	7/18/2012	FOX, Gray	Cortland	MARATHON TOWN

ACC ID	Date	Species	County	Location
12-02786	7/18/2012	FOX, Gray	Saratoga	CORINTH TOWN
12-02797	7/18/2012	BAT, Big Brown	Westchester	SOMERS TOWN
12-02816	7/19/2012	BAT, Big Brown	Washington	SALEM TOWN
12-02841	7/19/2012	SKUNK	Albany	BETHLEHEM TOWN
12-02870	7/20/2012	BAT, Big Brown	Clinton	CHAZY TOWN
12-02911	7/23/2012	RACCOON	Tompkins	ENFIELD TOWN
12-02940	7/23/2012	BAT, Big Brown	Ontario	GENEVA CITY
12-03016	7/24/2012	RACCOON	Onondaga	MANLIUS TOWN
12-03029	7/24/2012	BAT, Big Brown	Albany	GUILDERLAND TOWN
12-03031	7/24/2012	BAT, Big Brown	Warren	JOHNSBURG TOWN
12-03063	7/24/2012	SKUNK	Albany	BETHLEHEM TOWN
12-03069	7/25/2012	BAT, Big Brown	Erie	BUFFALO CITY
12-03073	7/25/2012	BAT, Big Brown	Allegany	AMITY TOWN
12-03124	7/26/2012	RACCOON	Essex	JAY TOWN
12-03143	7/26/2012	BAT, Big Brown	Wayne	ARCADIA TOWN
12-03153	7/26/2012	BAT, Big Brown	Jefferson	CHAMPION TOWN
12-03208	7/27/2012	RACCOON	Westchester	LEWISBORO TOWN
12-03251	7/27/2012	BAT, Big Brown	Niagara	SOMERSET TOWN
12-03273	7/30/2012	CAT	Westchester	GREENBURGH TOWN
12-03324	7/31/2012	BAT, Big Brown	Schenectady	NISKAYUNA TOWN
12-03387	7/31/2012	BAT, Big Brown	Washington	KINGSBURY TOWN
12-03426	7/31/2012	WOODCHUCK	Tompkins	DRYDEN TOWN
12-03445	7/31/2012	BAT, Big Brown	Onondaga	SYRACUSE CITY
12-03464	7/31/2012	BAT, Big Brown	Cayuga	AUBURN CITY
12-03485	7/31/2012	BAT, Big Brown	Erie	TONAWANDA TOWN
12-03488	7/31/2012	BAT, Big Brown	Erie	BUFFALO CITY
12-03609	8/1/2012	BAT, Big Brown	Schuyler	DIX TOWN
12-03635	8/1/2012	RACCOON	Essex	CHESTERFIELD TOWN
12-03638	8/2/2012	FOX, Red	Onondaga	MANLIUS TOWN
12-03646	8/2/2012	BAT, Big Brown	Washington	EASTON TOWN
12-03736	8/3/2012	BAT, Big Brown	Albany	GUILDERLAND TOWN
12-03774	8/3/2012	RACCOON	Westchester	BEDFORD TOWN
12-03785	8/3/2012	BAT, Big Brown	Erie	TONAWANDA TOWN
12-03804	8/3/2012	BAT, Big Brown	Putnam	CARMEL TOWN
12-03858	8/3/2012	BEAVER	Out-Of-State	OUT-OF-STATE
12-03870	8/6/2012	RACCOON	Tioga	BERKSHIRE TOWN
12-03886	8/6/2012	BAT, Big Brown	Erie	BUFFALO CITY
12-03900	8/6/2012	RACCOON	Genesee	LE ROY TOWN
12-03918	8/6/2012	BAT, Small Brown	Westchester	MOUNT PLEASANT TOWN
12-03932	8/6/2012	BAT, Big Brown	Westchester	MOUNT KISCO TOWN/VILLAGE
12-03965	8/7/2012	BAT, Big Brown	Monroe	BRIGHTON TOWN
12-03982	8/7/2012	RACCOON	Essex	WILLSBORO TOWN
12-03984	8/7/2012	RACCOON	Cayuga	SCIPIO TOWN
12-04001	8/7/2012	BAT, Big Brown	Chemung	ELMIRA CITY
12-04023	8/7/2012	BAT, Big Brown	Orange	BLOOMING GROVE TOWN
12-04093	8/7/2012	BAT, Big Brown	Tompkins	DRYDEN TOWN
12-04120	8/7/2012	BAT, Big Brown	Dutchess	RHINEBECK TOWN
12-04191	8/8/2012	BAT, Big Brown	Chemung	ELMIRA CITY
12-04194	8/8/2012	RACCOON	Broome	WINDSOR TOWN
12-04321	8/9/2012	SKUNK	Orange	WARWICK TOWN
12-04380	8/9/2012	BAT, Big Brown	Erie	HAMBURG TOWN
12-04394	8/10/2012	BAT, Big Brown	Oswego	OSWEGO CITY
12-04397	8/10/2012	RACCOON	Essex	CHESTERFIELD TOWN

ACC ID	Date	Species	County	Location
12-04403	8/10/2012	RACCOON	Essex	ELIZABETHTOWN TOWN
12-04404	8/10/2012	RACCOON	Wayne	WALWORTH TOWN
12-04504	8/13/2012	RACCOON	Tioga	CANDOR TOWN
12-04541	8/13/2012	DEER	Monroe	CLARKSON TOWN
12-04580	8/13/2012	BAT, Big Brown	Rockland	CLARKSTOWN TOWN
12-04587	8/13/2012	RACCOON	Essex	WILMINGTON TOWN
12-04593	8/13/2012	FOX, Gray	Rensselaer	RENSSELAER CITY
12-04609	8/14/2012	RACCOON	Erie	SARDINIA TOWN
12-04651	8/14/2012	SKUNK	Wayne	BUTLER TOWN
12-04666	8/14/2012	BAT, Big Brown	Erie	AURORA TOWN
12-04668	8/14/2012	BAT, Big Brown	Erie	BUFFALO CITY
12-04714	8/14/2012	BAT, Big Brown	Yates	TORREY TOWN
12-04734	8/14/2012	CAT	Chautauqua	FRENCH CREEK TOWN
12-04761	8/15/2012	BAT, Big Brown	Erie	TONAWANDA CITY
12-04766	8/15/2012	BAT, Big Brown	Livingston	CALEDONIA TOWN
12-04801	8/15/2012	BAT, Red	Westchester	RYE CITY
12-04836	8/15/2012	BAT, Hoary	Tompkins	ITHACA CITY
12-04838	8/15/2012	BAT, Big Brown	Saratoga	CLIFTON PARK TOWN
12-04855	8/16/2012	BAT, Big Brown	Erie	TONAWANDA TOWN
12-04872	8/16/2012	RACCOON	Cattaraugus	ALLEGANY TOWN
12-04908	8/16/2012	SKUNK	Saratoga	CLIFTON PARK TOWN
12-04916	8/17/2012	BAT, Big Brown	Oswego	RICHLAND TOWN
12-05032	8/21/2012	CATTLE	Broome	UNION TOWN
12-05041	8/21/2012	BAT, Big Brown	Erie	BUFFALO CITY
12-05056	8/21/2012	SKUNK	Oneida	VERNON TOWN
12-05061	8/21/2012	RACCOON	Ulster	WOODSTOCK TOWN
12-05120	8/21/2012	RACCOON	Jefferson	ALEXANDRIA TOWN
12-05131	8/22/2012	SKUNK	Oswego	VOLNEY TOWN
12-05179	8/23/2012	RACCOON	Jefferson	ALEXANDRIA TOWN
12-05211	8/23/2012	BAT, Big Brown	Steuben	HORNELLSVILLE TOWN
12-05230	8/24/2012	BAT, Big Brown	Orleans	GAINES TOWN
12-05248	8/25/2012	SKUNK	Chautauqua	PORTLAND TOWN
12-05252	8/27/2012	RACCOON	Wayne	ONTARIO TOWN
12-05257	8/27/2012	RACCOON	Essex	CHESTERFIELD TOWN
12-05264	8/27/2012	BAT, Big Brown	Rockland	CLARKSTOWN TOWN
12-05288	8/28/2012	RACCOON	St. Lawrence	POTSDAM TOWN
12-05313	8/28/2012	RACCOON	Chemung	SOUTHPORT TOWN
12-05323	8/28/2012	BAT, Big Brown	Dutchess	AMENIA TOWN
12-05352	8/29/2012	RACCOON	St. Lawrence	GOUVERNEUR TOWN
12-05369	8/29/2012	RACCOON	Ulster	NEW PALTZ TOWN
12-05372	8/29/2012	DEER	Tompkins	LANSING TOWN
12-05381	8/30/2012	RACCOON	Cortland	CORTLANDVILLE TOWN
12-05429	8/31/2012	CATTLE	Madison	FENNER TOWN
12-05434	9/1/2012	BAT, Hoary	Tompkins	ITHACA TOWN
12-05435	9/1/2012	BAT, Big Brown	Tompkins	GROTON TOWN
12-05436	9/4/2012	RACCOON	Cayuga	GENOA TOWN
12-05437	9/4/2012	RACCOON	Westchester	SOMERS TOWN
12-05438	9/4/2012	SKUNK	Erie	COLLINS TOWN
12-05439	9/4/2012	BAT, Big Brown	Albany	BETHLEHEM TOWN
12-05440	9/4/2012	BAT, Big Brown	Erie	BUFFALO CITY
12-05462	9/5/2012	RACCOON	Yates	JERUSALEM TOWN
12-05470	9/5/2012	BAT, Big Brown	Putnam	SOUTHEAST TOWN
12-05471	9/5/2012	BAT, Big Brown	Orleans	CARLTON TOWN

ACC ID	Date	Species	County	Location
12-05484	9/6/2012	FOX, Gray	Sullivan	HIGHLAND TOWN
12-05485	9/6/2012	SKUNK	Jefferson	WATERTOWN CITY
12-05488	9/6/2012	CAT	Steuben	CORNING CITY
12-05493	9/6/2012	DEER	Genesee	LE ROY TOWN
12-05501	9/7/2012	RACCOON	Clinton	AUSABLE TOWN
12-05528	9/10/2012	BAT, Red	Nassau	HEMPSTEAD TOWN
12-05533	9/11/2012	BAT, Big Brown	Erie	AURORA TOWN
12-05535	9/11/2012	FOX, Gray	Broome	VESTAL TOWN
12-05537	9/11/2012	RACCOON	Niagara	LOCKPORT TOWN
12-05539	9/11/2012	RACCOON	Chenango	NORWICH TOWN
12-05543	9/11/2012	SKUNK	Onondaga	OTISCO TOWN
12-05548	9/11/2012	BAT, Big Brown	Erie	ORCHARD PARK TOWN
12-05551	9/11/2012	BAT, Big Brown	Oswego	RICHLAND TOWN
12-05558	9/12/2012	RACCOON	Essex	WILMINGTON TOWN
12-05559	9/12/2012	BAT, Big Brown	Albany	ALBANY CITY
12-05560	9/12/2012	FOX, Gray	Cayuga	BRUTUS TOWN
12-05576	9/13/2012	BAT, Big Brown	Chenango	NEW BERLIN TOWN
12-05578	9/13/2012	BAT, Big Brown	Herkimer	NEWPORT TOWN
12-05579	9/13/2012	SKUNK	Herkimer	FAIRFIELD TOWN
12-05581	9/13/2012	BAT, Big Brown	Saratoga	NORTHUMBERLAND TOWN
12-05600	9/14/2012	FOX, Gray	Oswego	GRANBY TOWN
12-05605	9/17/2012	RACCOON	Rockland	HAVERSTRAW TOWN
12-05616	9/18/2012	RACCOON	Onondaga	LYSANDER TOWN
12-05618	9/18/2012	RACCOON	Livingston	PORTAGE TOWN
12-05631	9/19/2012	RACCOON	Erie	ALDEN TOWN
12-05646	9/19/2012	BAT, Red	Suffolk	ISLIP TOWN
12-05648	9/19/2012	BAT, Big Brown	Tompkins	ITHACA CITY
12-05649	9/19/2012	BAT, Big Brown	Orange	WAWAYANDA TOWN
12-05650	9/19/2012	BAT, Big Brown	Greene	CATSKILL TOWN
12-05661	9/20/2012	BAT, Big Brown	Yates	BARRINGTON TOWN
12-05686	9/21/2012	RACCOON	Delaware	WALTON TOWN
12-05689	9/24/2012	RACCOON	Dutchess	PAWLING TOWN
12-05691	9/24/2012	SKUNK	Putnam	SOUTHEAST TOWN
12-05692	9/24/2012	SKUNK	Erie	HAMBURG TOWN
12-05701	9/25/2012	RACCOON	Chemung	BIG FLATS TOWN
12-05714	9/26/2012	SKUNK	Erie	ORCHARD PARK TOWN
12-05716	9/26/2012	RACCOON	Ontario	SOUTH BRISTOL TOWN
12-05754	9/28/2012	RACCOON	Chenango	NORWICH TOWN
12-05770	9/28/2012	SKUNK	Essex	JAY TOWN
12-05781	10/2/2012	SKUNK	Jefferson	RUTLAND TOWN
12-05783	10/2/2012	SKUNK	Clinton	AUSABLE TOWN
12-05808	10/3/2012	BAT, Big Brown	Westchester	CORTLANDT TOWN
12-05811	10/4/2012	BAT, Big Brown	Ulster	ROSENDALE TOWN
12-05814	10/4/2012	CAT	Oswego	RICHLAND TOWN
12-05816	10/4/2012	RACCOON	Essex	TICONDEROGA TOWN
12-05817	10/4/2012	SKUNK	Washington	FORT ANN TOWN
12-05818	10/4/2012	FOX, Gray	Herkimer	FRANKFORT TOWN
12-05826	10/5/2012	RACCOON	Essex	JAY TOWN
12-05828	10/5/2012	SKUNK	Niagara	HARTLAND TOWN
12-05829	10/5/2012	RACCOON	Allegany	ANDOVER TOWN
12-05881	10/11/2012	RACCOON	Essex	JAY TOWN
12-05894	10/12/2012	BAT, Big Brown	Ontario	RICHMOND TOWN
12-05896	10/12/2012	SKUNK	Genesee	ALABAMA TOWN

ACC ID	Date	Species	County	Location
12-05912	10/13/2012	BAT, Big Brown	Westchester	GREENBURGH TOWN
12-05914	10/15/2012	RACCOON	Chenango	PITCHER TOWN
12-05916	10/15/2012	CAT	Steuben	LINDLEY TOWN
12-05925	10/15/2012	RACCOON	Albany	BETHLEHEM TOWN
12-05931	10/16/2012	SKUNK	Schoharie	RICHMONDVILLE TOWN
12-05932	10/16/2012	BAT, Big Brown	Chemung	ELMIRA CITY
12-05935	10/16/2012	RACCOON	Jefferson	ADAMS TOWN
12-05960	10/16/2012	DEER	Albany	NEW SCOTLAND TOWN
12-05962	10/16/2012	RACCOON	Essex	JAY TOWN
12-05974	10/17/2012	RACCOON	Tompkins	NEWFIELD TOWN
12-05988	10/18/2012	RACCOON	Erie	HAMBURG TOWN
12-05992	10/18/2012	SKUNK	Ulster	WAWARSING TOWN
12-06001	10/18/2012	BAT, Big Brown	Westchester	RYE TOWN
12-06047	10/24/2012	RACCOON	Cayuga	STERLING TOWN
12-06048	10/24/2012	SKUNK	Clinton	AUSABLE TOWN
12-06049	10/24/2012	BAT, Big Brown	Chemung	ELMIRA TOWN
12-06055	10/24/2012	SKUNK	Albany	BETHLEHEM TOWN
12-06085	10/29/2012	RACCOON	Jefferson	BROWNVILLE TOWN
12-06087	10/30/2012	GOAT	Madison	SMITHFIELD TOWN
12-06116	11/1/2012	RACCOON	Steuben	BATH TOWN
12-06117	11/1/2012	RACCOON	Livingston	CALEDONIA TOWN
12-06144	11/2/2012	SKUNK	Otsego	MIDDLEFIELD TOWN
12-06166	11/6/2012	SKUNK	Saratoga	WILTON TOWN
12-06171	11/6/2012	SKUNK	Clinton	AUSABLE TOWN
12-06188	11/8/2012	RACCOON	Albany	ALBANY CITY
12-06189	11/8/2012	RACCOON	Monroe	PENFIELD TOWN
12-06195	11/8/2012	SKUNK	Clinton	PERU TOWN
12-06231	11/14/2012	RACCOON	Essex	WILMINGTON TOWN
12-06234	11/14/2012	RACCOON	Jefferson	WATERTOWN CITY
12-06239	11/14/2012	CAT	Livingston	YORK TOWN
12-06259	11/15/2012	RACCOON	St. Lawrence	CANTON TOWN
12-06263	11/15/2012	RACCOON	Cattaraugus	SALAMANCA TOWN
12-06289	11/16/2012	SKUNK	Erie	EDEN TOWN
12-06301	11/19/2012	RACCOON	Albany	NEW SCOTLAND TOWN
12-06308	11/20/2012	RACCOON	Jefferson	ADAMS TOWN
12-06356	11/26/2012	OTTER	Schuyler	DIX TOWN
12-06365	11/27/2012	SKUNK	Saratoga	GALWAY TOWN
12-06375	11/27/2012	RACCOON	Westchester	SCARSDALE TOWN/VILLAGE
12-06377	11/27/2012	CAT	Orange	BLOOMING GROVE TOWN
12-06389	11/29/2012	SKUNK	Albany	GUILDERLAND TOWN
12-06413	11/30/2012	RACCOON	Wyoming	ARCADE TOWN
12-06419	11/30/2012	CAT	Wyoming	JAVA TOWN
12-06421	12/3/2012	RACCOON	Herkimer	FAIRFIELD TOWN
12-06434	12/4/2012	SKUNK	Herkimer	DANUBE TOWN
12-06477	12/6/2012	FOX, Red	Orange	HIGHLANDS TOWN
12-06482	12/7/2012	SKUNK	Ulster	SAUGERTIES TOWN
12-06486	12/7/2012	CAT	Tioga	CANDOR TOWN
12-06510	12/11/2012	RACCOON	Madison	HAMILTON TOWN
12-06514	12/11/2012	BAT, Big Brown	Livingston	NORTH DANSVILLE TOWN
12-06531	12/12/2012	RACCOON	Erie	WALES TOWN
12-06548	12/14/2012	RACCOON	Erie	HAMBURG TOWN
12-06549	12/14/2012	RACCOON	Herkimer	DANUBE TOWN
12-06550	12/14/2012	SKUNK	Herkimer	COLUMBIA TOWN

ACC ID	Date	Species	County	Location
12-06577	12/18/2012	BAT, Big Brown	Erie	BUFFALO CITY
12-06600	12/20/2012	FOX, Gray	Allegany	WELLSVILLE TOWN
12-06617	12/24/2012	RACCOON	Clinton	PERU TOWN
12-06627	12/24/2012	RACCOON	Essex	KEENE TOWN
12-06640	12/28/2012	RACCOON	Ontario	VICTOR TOWN