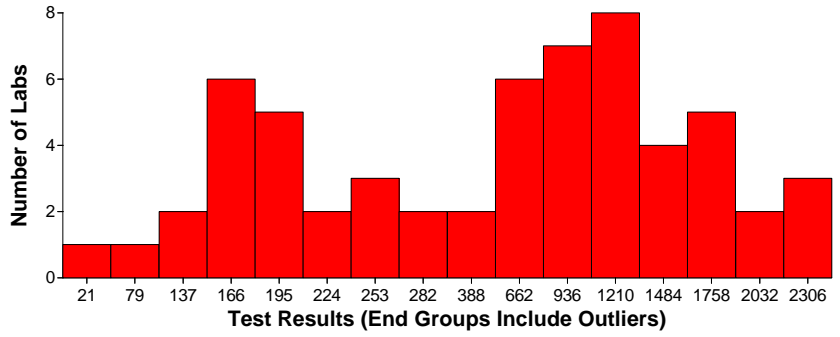


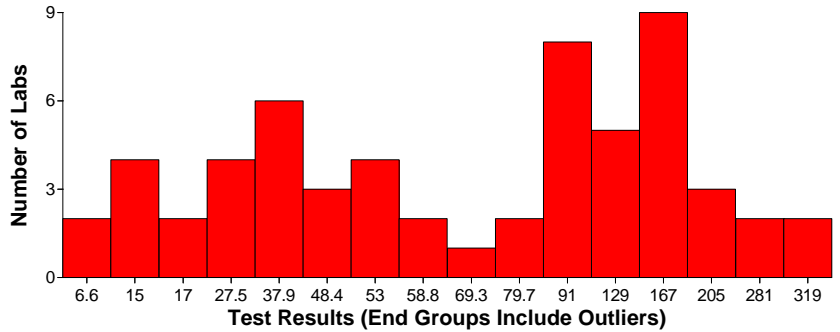
Air and Emissions Asbestos

Shipment: 406 **Matrix:** Air and Emissions
Analyte: Asbestos
Sample: 1784
Technology: TEM
Prep Method:
Target: 195 Struct/ mm2
Limits: 21 to 369 Struct/ mm2
Basis: Robust Statistics (Normal Distribution)
Robust Mean: 866.5 Struct/ mm2
Std Dev: 669.7775 Struct/ mm2
Median: 751.04 Struct/ mm2
Totals for Matrix/Analyte/Technology:
Labs: Pass: 58 **Fail:** 1 **Total:** 59
Totals for Matrix/Analyte: **Labs: Pass:** 21 **Fail:** 1 **Total:** 22



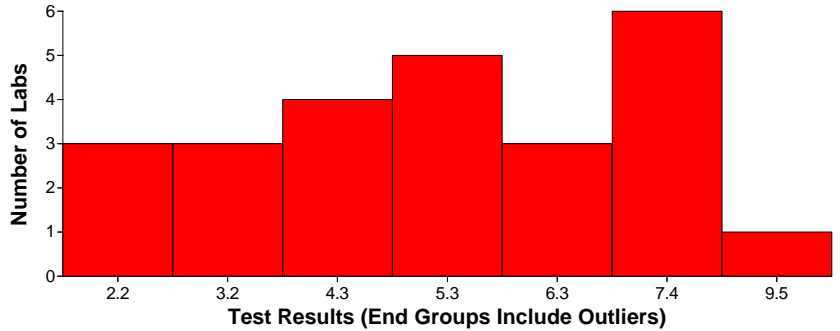
Air and Emissions Asbestos

Shipment: 406 **Matrix:** Air and Emissions
Analyte: Asbestos
Sample: 7314
Technology: TEM
Prep Method:
Target: 37.9 Struct/ mm2
Limits: 3.6 to 101 Struct/ mm2
Basis: Manual Limits
Robust Mean: 98.8 Struct/ mm2
Std Dev: 77.0608 Struct/ mm2
Median: 76 Struct/ mm2
Totals for Matrix/Analyte/Technology:
Labs: Pass: 56 **Fail:** 3 **Total:** 59
Totals for Matrix/Analyte: **Labs: Pass:** 21 **Fail:** 1 **Total:** 22



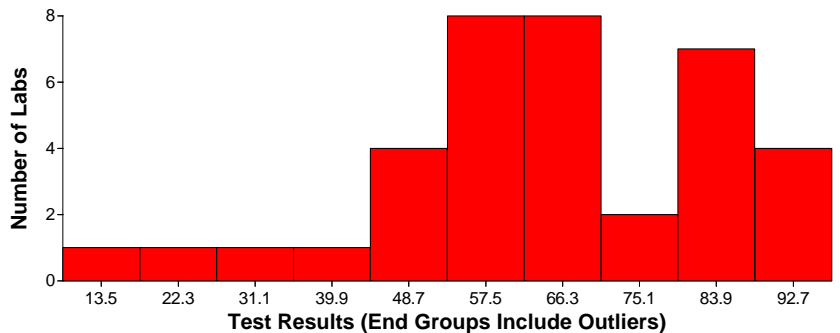
Potable Water Asbestos

Shipment: 406 **Matrix:** Potable Water
Analyte: Asbestos
Sample: 6228
Technology: TEM
Prep Method:
Target: 2.9 MF/L
Limits: 1.31 to 9.27 MF/L
Basis: Stat Linear Regression
Robust Mean: 5.3 MF/L
Std Dev: 2.0269 MF/L
Median: 5.3 MF/L
Totals for Matrix/Analyte/Technology:
Labs: Pass: 24 **Fail:** 1 **Total:** 25
Totals for Matrix/Analyte: **Labs: Pass:** 24 **Fail:** 1 **Total:** 25



Solid and Hazardous Waste Asbestos in Non-Friable Material-TEM

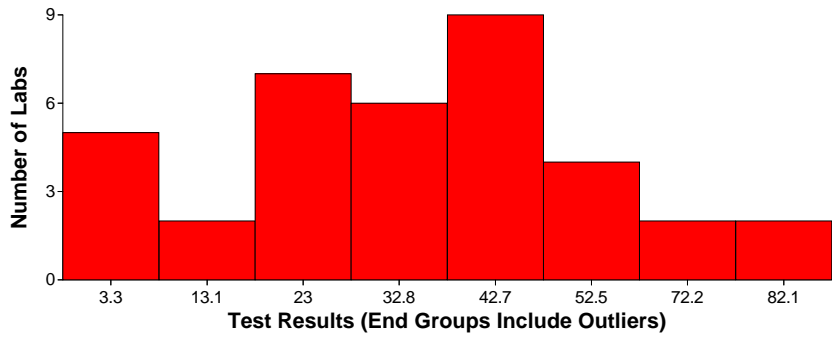
Shipment: 406 **Matrix:** Solid and Hazardous Waste
Analyte: Asbestos in Non-Friable Material-TEM
Sample: 3325
Technology: TEM
Prep Method:
Target: 90 %
Limits: 13.5 to 119 %
Basis: Robust Statistics (Normal Distribution)
Robust Mean: 64.8 %
Std Dev: 18.4678 %
Median: 65 %
Totals for Matrix/Analyte/Technology:
Labs: Pass: 37 **Fail:** 0 **Total:** 37
Totals for Matrix/Analyte: **Labs: Pass:** 37 **Fail:** 0 **Total:** 37



Solid and Hazardous Waste Asbestos in Non-Friable Material-TEM

Solid and Hazardous Waste Asbestos in Non-Friable Material-TEM

Shipment: 406 **Matrix:** Solid and Hazardous Waste
Analyte: Asbestos in Non-Friable Material-TEM
Sample: 7562
Technology: TEM
Prep Method:
Target: 86 %
Limits: 3.2 to 91.9 %
Basis: Manual Limits
Robust Mean: 34.8 %
Std Dev: 20.8657 %
Median: 35 %



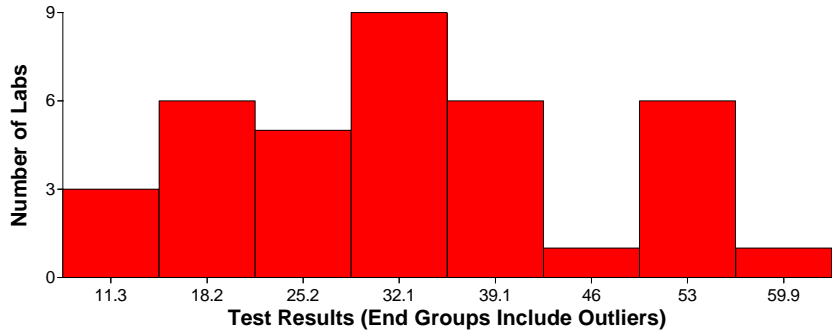
Totals for Matrix/Analyte/Technology:

Labs: Pass: 37 **Fail:** 0 **Total:** 37

Totals for Matrix/Analyte: **Labs: Pass:** 37 **Fail:** 0 **Total:** 37

Solid and Hazardous Waste Asbestos in Non-Friable Material-TEM

Shipment: 406 **Matrix:** Solid and Hazardous Waste
Analyte: Asbestos in Non-Friable Material-TEM
Sample: 3325
Technology: TEM
Prep Method:
Target: 15.1 %
Limits: 3.2 to 73.8 %
Basis: Manual Limits
Robust Mean: 32.7 %
Std Dev: 13.137 %
Median: 31.1 %



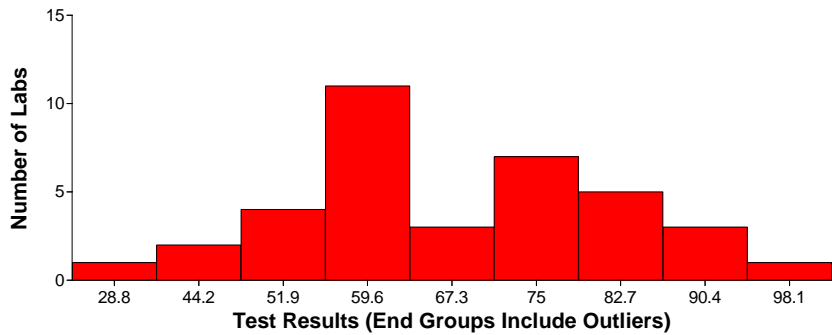
Totals for Matrix/Analyte/Technology:

Labs: Pass: 37 **Fail:** 0 **Total:** 37

Totals for Matrix/Analyte: **Labs: Pass:** 37 **Fail:** 0 **Total:** 37

Solid and Hazardous Waste Asbestos in Non-Friable Material-TEM

Shipment: 406 **Matrix:** Solid and Hazardous Waste
Analyte: Asbestos in Non-Friable Material-TEM
Sample: 7562
Technology: TEM
Prep Method:
Target: 68.4 %
Limits: 21.1 to 114 %
Basis: Robust Statistics (Normal Distribution)
Robust Mean: 67.4 %
Std Dev: 15.1057 %
Median: 64.7 %



Totals for Matrix/Analyte/Technology:

Labs: Pass: 37 **Fail:** 0 **Total:** 37

Totals for Matrix/Analyte: **Labs: Pass:** 37 **Fail:** 0 **Total:** 37