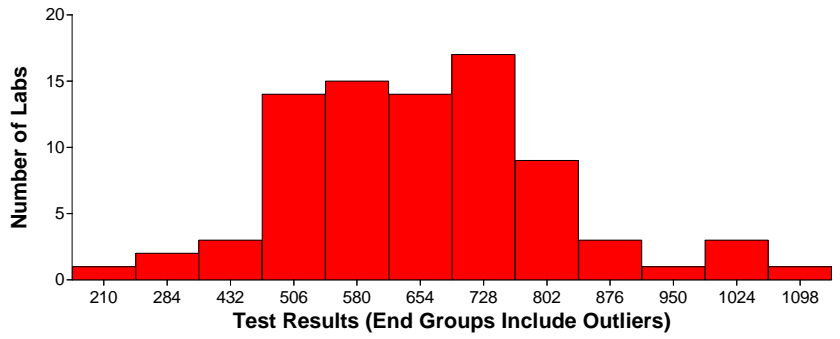


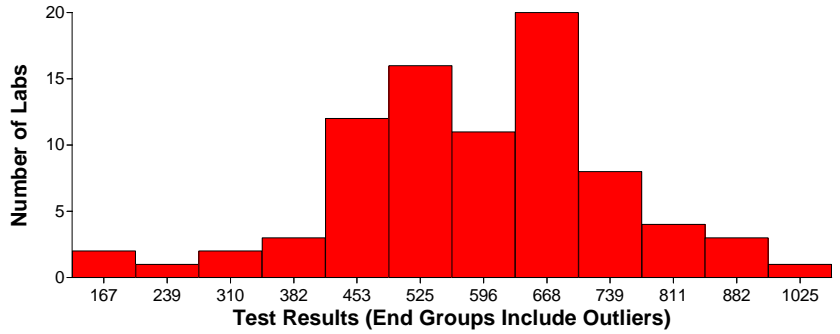
Air and Emissions Fibers

Shipment: 409 **Matrix:** Air and Emissions
Analyte: Fibers
Sample: 2023
Technology: PCM
Prep Method:
Target: 809.38 Fibers per mm2
Limits: 210 to 1100 Fibers per mm2
Basis: Robust Statistics (Normal Distribution)
Robust Mean: 658.4 Fibers per mm2
Std Dev: 175.9113 Fibers per mm2
Median: 659.23 Fibers per mm2
Totals for Matrix/Analyte/Technology:
Labs: Pass: 81 **Fail:** 2 **Total:** 83
Totals for Matrix/Analyte: **Labs: Pass:** 81 **Fail:** 2 **Total:** 83



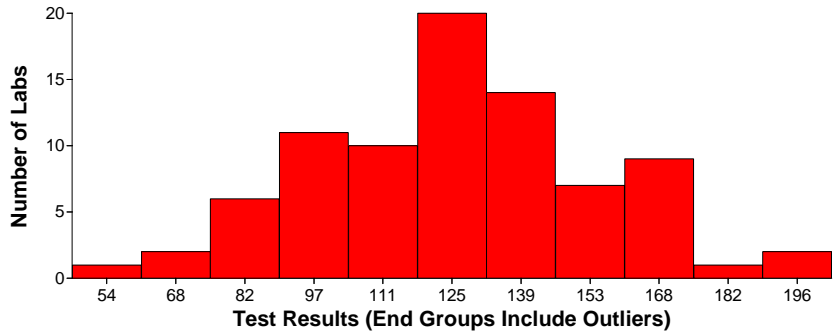
Air and Emissions Fibers

Shipment: 409 **Matrix:** Air and Emissions
Analyte: Fibers
Sample: 4127
Technology: PCM
Prep Method:
Target: 684.58 Fibers per mm2
Limits: 167 to 1030 Fibers per mm2
Basis: Robust Statistics (Normal Distribution)
Robust Mean: 586.4 Fibers per mm2
Std Dev: 157.503 Fibers per mm2
Median: 613 Fibers per mm2
Totals for Matrix/Analyte/Technology:
Labs: Pass: 82 **Fail:** 1 **Total:** 83
Totals for Matrix/Analyte: **Labs: Pass:** 82 **Fail:** 1 **Total:** 83



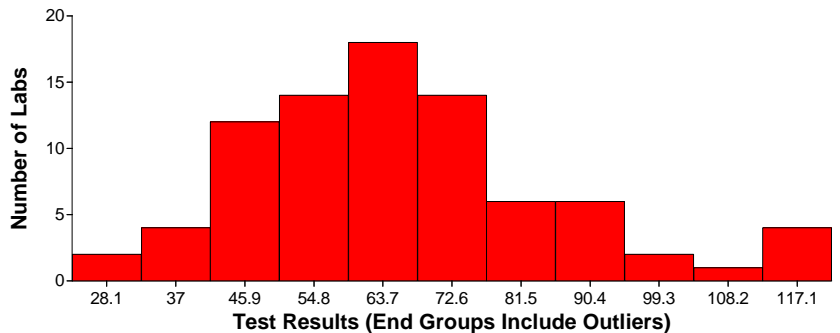
Air and Emissions Fibers

Shipment: 409 **Matrix:** Air and Emissions
Analyte: Fibers
Sample: 4386
Technology: PCM
Prep Method:
Target: 170.86 Fibers per mm2
Limits: 39.8 to 210 Fibers per mm2
Basis: Robust Statistics (Normal Distribution)
Robust Mean: 125.7 Fibers per mm2
Std Dev: 28.7116 Fibers per mm2
Median: 124 Fibers per mm2
Totals for Matrix/Analyte/Technology:
Labs: Pass: 83 **Fail:** 0 **Total:** 83
Totals for Matrix/Analyte: **Labs: Pass:** 83 **Fail:** 0 **Total:** 83



Air and Emissions Fibers

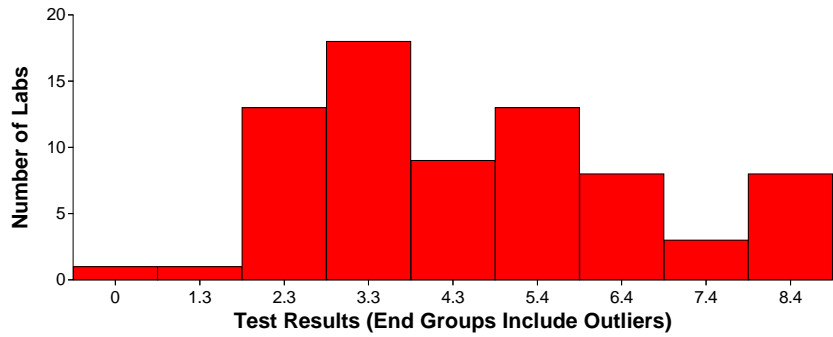
Shipment: 409 **Matrix:** Air and Emissions
Analyte: Fibers
Sample: 8584
Technology: PCM
Prep Method:
Target: 74.14 Fibers per mm2
Limits: 10.3 to 117 Fibers per mm2
Basis: Robust Statistics (Normal Distribution)
Robust Mean: 63.7 Fibers per mm2
Std Dev: 21.195 Fibers per mm2
Median: 65 Fibers per mm2
Totals for Matrix/Analyte/Technology:
Labs: Pass: 79 **Fail:** 4 **Total:** 83
Totals for Matrix/Analyte: **Labs: Pass:** 79 **Fail:** 4 **Total:** 83



Solid and Hazardous Waste Asbestos in Friable Material

Solid and Hazardous Waste Asbestos in Friable Material

Shipment: 409 **Matrix:** Solid and Hazardous Waste
Analyte: Asbestos in Friable Material
Sample: 1604
Technology: PLM
Prep Method:
Target: 7.36 %
Limits: 1 to 8.4 %
Basis: Swa scoring
Robust Mean: 4.5 %
Std Dev: 2.1522 %
Median: 4.4 %



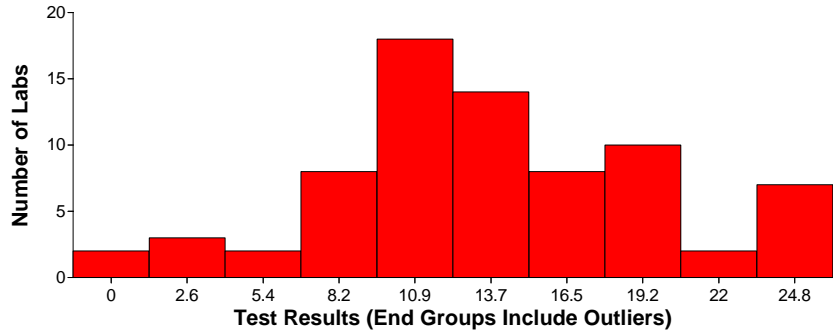
Totals for Matrix/Analyte/Technology:

Labs: Pass: 66 Fail: 8 Total: 74

Totals for Matrix/Analyte: Labs: Pass: 66 Fail: 8 Total: 74

Solid and Hazardous Waste Asbestos in Friable Material

Shipment: 409 **Matrix:** Solid and Hazardous Waste
Analyte: Asbestos in Friable Material
Sample: 4809
Technology: PLM
Prep Method:
Target: 17.32 %
Limits: 2.6 to 25 %
Basis: Swa scoring
Robust Mean: 13.3 %
Std Dev: 6.2156 %
Median: 14 %



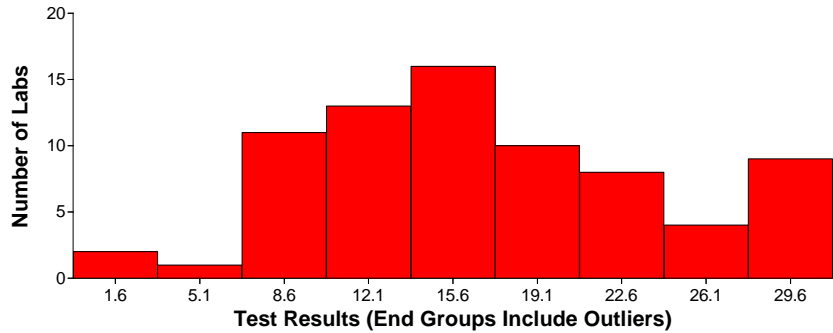
Totals for Matrix/Analyte/Technology:

Labs: Pass: 63 Fail: 11 Total: 74

Totals for Matrix/Analyte: Labs: Pass: 63 Fail: 11 Total: 74

Solid and Hazardous Waste Asbestos in Friable Material

Shipment: 409 **Matrix:** Solid and Hazardous Waste
Analyte: Asbestos in Friable Material
Sample: 6320
Technology: PLM
Prep Method:
Target: 10.63 %
Limits: 1.6 to 30 %
Basis: Swa scoring
Robust Mean: 15.5 %
Std Dev: 7.5124 %
Median: 15.25 %



Totals for Matrix/Analyte/Technology:

Labs: Pass: 66 Fail: 8 Total: 74

Totals for Matrix/Analyte: Labs: Pass: 66 Fail: 8 Total: 74