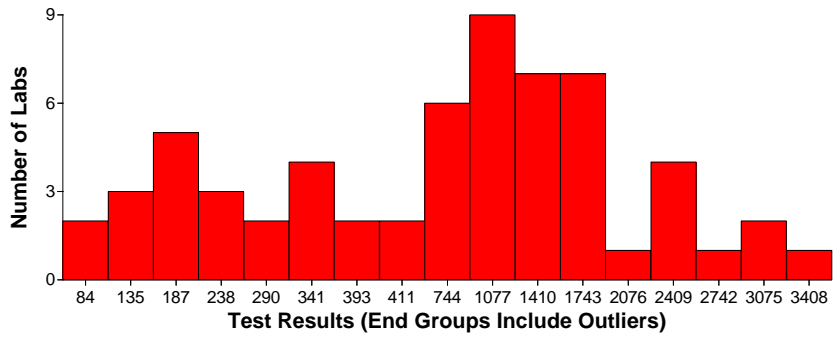


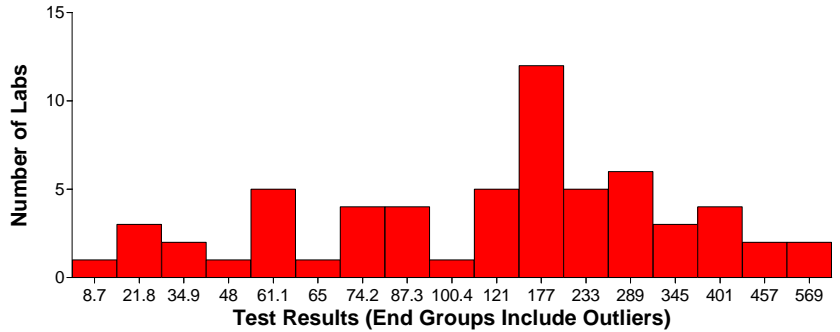
### Air and Emissions Asbestos

**Shipment:** 411      **Matrix:** Air and Emissions  
**Analyte:** Asbestos  
**Sample:** 2250  
**Technology:** TEM  
**Prep Method:**  
**Target:** 238      Struct/ mm2  
**Limits:** 23.8 to 547 Struct/ mm2  
**Basis:** Manual Limits  
**Robust Mean:** 1042.7 Struct/ mm2  
**Std Dev:** 803.2197 Struct/ mm2  
**Median:** 976.8 Struct/ mm2  
**Totals for Matrix/Analyte/Technology:**  
**Labs: Pass:** 60      **Fail:** 1      **Total:** 61  
**Totals for Matrix/Analyte:**      **Labs: Pass:** 21      **Fail:** 0      **Total:** 21



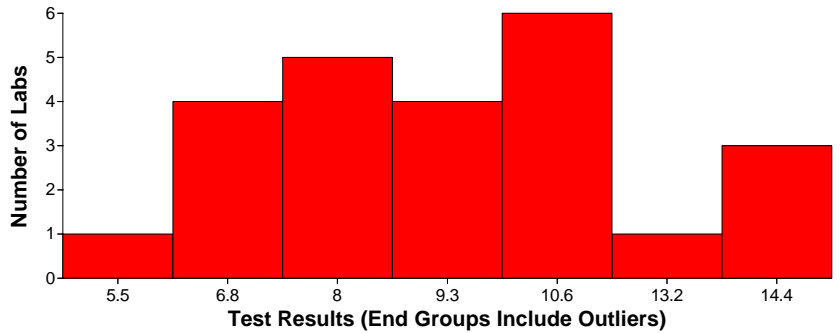
### Air and Emissions Asbestos

**Shipment:** 411      **Matrix:** Air and Emissions  
**Analyte:** Asbestos  
**Sample:** 5362  
**Technology:** TEM  
**Prep Method:**  
**Target:** 61.1      Struct/ mm2  
**Limits:** 6.1 to 140 Struct/ mm2  
**Basis:** Manual Limits  
**Robust Mean:** 175.6 Struct/ mm2  
**Std Dev:** 123.3053 Struct/ mm2  
**Median:** 155 Struct/ mm2  
**Totals for Matrix/Analyte/Technology:**  
**Labs: Pass:** 59      **Fail:** 2      **Total:** 61  
**Totals for Matrix/Analyte:**      **Labs: Pass:** 21      **Fail:** 0      **Total:** 21



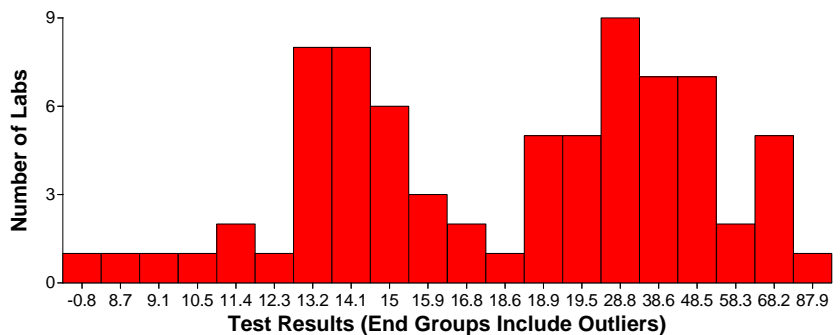
### Potable Water Asbestos

**Shipment:** 411      **Matrix:** Potable Water  
**Analyte:** Asbestos  
**Sample:** 2360  
**Technology:** TEM  
**Prep Method:**  
**Target:** 10      MF/L  
**Limits:** 2.94 to 15.7 MF/L  
**Basis:** Stat Linear Regression  
**Robust Mean:** 10 MF/L  
**Std Dev:** 3.1292 MF/L  
**Median:** 9.715 MF/L  
**Totals for Matrix/Analyte/Technology:**  
**Labs: Pass:** 21      **Fail:** 3      **Total:** 24  
**Totals for Matrix/Analyte:**      **Labs: Pass:** 21      **Fail:** 3      **Total:** 24



### Solid and Hazardous Waste Asbestos in Non-Friable Material-TEM

**Shipment:** 411      **Matrix:** Solid and Hazardous Waste  
**Analyte:** Asbestos in Non-Friable Material-TEM  
**Sample:** 5085  
**Technology:** TEM  
**Prep Method:**  
**Target:** 14.86      %  
**Limits:** 8.73 to 19.5 %  
**Basis:** Robust Statistics (Normal Distribution)  
**Robust Mean:** 28 %  
**Std Dev:** 20.0433 %  
**Median:** 17.15 %  
**Totals for Matrix/Analyte/Technology:**  
**Labs: Pass:** 69      **Fail:** 7      **Total:** 76  
**Totals for Matrix/Analyte:**      **Labs: Pass:** 32      **Fail:** 6      **Total:** 38



### Solid and Hazardous Waste Asbestos in Non-Friable Material-TEM

### Solid and Hazardous Waste Asbestos in Non-Friable Material-TEM

**Shipment:** 411      **Matrix:** Solid and Hazardous Waste  
**Analyte:** Asbestos in Non-Friable Material-TEM  
**Sample:** 8112  
**Technology:** TEM  
**Prep Method:**  
**Target:** 14.32 %  
**Limits:** 9.82 to 18.6 %  
**Basis:** Robust Statistics (Normal Distribution)  
**Robust Mean:** 14.4 %  
**Std Dev:** 5.5403 %  
**Median:** 14.35 %

**Totals for Matrix/Analyte/Technology:**  
**Labs: Pass:** 32      **Fail:** 6      **Total:** 38

**Totals for Matrix/Analyte:**      **Labs: Pass:** 32      **Fail:** 6      **Total:** 38

---

